



Submittal Data: 18RULX
Inverter Driven Heat Pump

18,000 BTU Universal Mount

Job Name: _____

Date: _____

Location: _____

Approval: _____

Engineer: _____

Construction: _____

Submitted to: _____

Unit #: _____

Submitted by: _____

Drawing #: _____

Reference: _____

General Features

- Refrigerant Type R410A.
- Wired and wireless remote controllers
- Omni-Directional Air Flow
- Mildew-Resistant Filter
- Pump Down Operation
- 2- Years Parts, 6-Years Compressor Warranty (See Warranty Statement for details)
- Floor/ceiling mount
- 24 hr. Timer

Model Information

Condenser..... AOU18RLX
 Evaporator..... ABU18RULX

Electrical..... 208/230V AC 1ph-60Hz

Available Voltage Range..... 187/253 +/- 10%
 Max Fuse Size..... 20 A
 Max Starting Current..... 9.1 A

Input Power

Cooling..... 1.63 kW
 Heating..... 2.25 kW

Running Current

Cooling..... 7.1 A
 Heating..... 9.8 A

Capacity

Nominal Cooling..... 17,800 Btu/h
 Rated / Max Cooling..... 17,800 / 21,500 Btu/h
 Nominal Heating..... 21,500 Btu/h
 Rated / Max Heating..... 21,500 / 25,600 Btu/h

Compressor..... DC Twin Rotary (Inverter)

Motor Output..... 1,300 W
 Refrigerant..... R410a
 Charge..... 4lbs. 3-1/32 oz
 Oil..... POE

Fan Motor

(Condenser) Type: DC..... Propeller x1
 (Condenser) Motor Output..... 100 W
 (Evaporator) Type: AC..... Sirocco x2
 (Evaporator) Motor Output..... 42 W
 Thermal Protection

Condenser..... 212°F +27 -18
 Evaporator..... 248 ± 9°F

Heat Exchanger

Condenser
 (H x W x D) in. (mm)..... 9-29/32 x 31-1/4 x 1-7/16 (252x800x36.38)
 Fin Pitch..... 20 FPI
 Rows x Stages..... 2 x 38
 Pipe Type (Material)..... Copper
 Fin Type (Material)..... Aluminum



Operation Temperature Range

Cooling..... 0°F - 115°F (-18°C - 46°C)
 Heating..... 14°F - 75°F (-10°C - 24°C)

Efficiency

SEER..... 16.0
 HSPF (heating)..... 8.5 Btu/hW

Enclosure

(Condenser) Material..... Steel
 (Condenser) Color..... Beige (approximate color or Munsell 10 YR 7.5/1.0)
 (Evaporator) Material..... Polystyrene
 (Evaporator) Color..... White (approximate color of Munsell N9.25)

Sound Pressure Level

Condenser..... 51 dB(A)
 Evaporator..... 43 dB(A)

Dimensions

H x W x D
 Condenser in. (mm)..... 32-11/16 x 35-7/16 x 13 (830x900x330)
 Evaporator in. (mm)..... 7-27/32 x 38-31/32 x 25-25/32 (199x990x655)

Connection Pipe

Liquid..... 1/4"
 Gas..... 1/2"
 Method (Liquid/Gas)..... Brazing
 Pre-charge..... 49 ft. (15 m)
 Minimum Length..... 16 ft. (5 m)
 Max Length..... 164 ft. (50m)
 Max Height Difference..... 66 ft. (20m)

Weight

Condenser..... 141 lbs. (64 kg)
 Evaporator..... 62 lbs. (28 kg)

Accessories

Wired Remote Controller..... UTY-RNBYU

Safety Devices

(Condenser) Current Fuse on Main PCB..... 3.15A 250V & 5 A 250V
 Compressor Protection (Thermal protector)..... off: 257°F on: 176°F
 High Pressure Protection..... off: 609±15psi on: 464±22psi
 (Evaporator) Current Fuse on Main PCB..... 3.15A 250V

Intertek®ETL Number

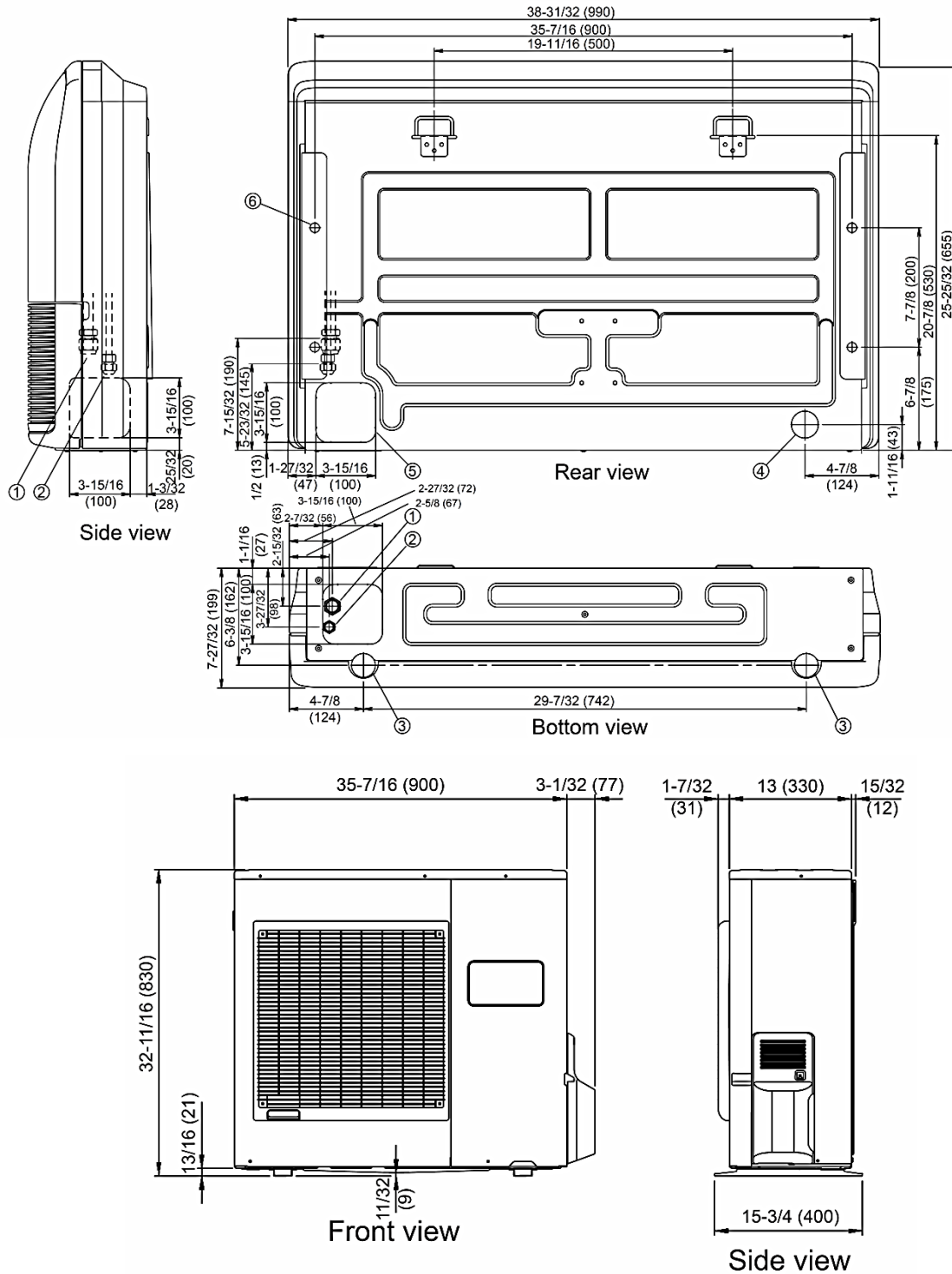
AOU..... 91987
 ABU..... 91987

Note: Specifications are based on the following conditions.
 Cooling: Indoor temperature of 80°F (26.7°C) DB/67°F (19.4°C) WB, and outdoor temperature of 95°F (35°C) DB/75°F (23.9°C) WB.
 Heating: Indoor temperature of 70°F (21.1°C) DB/59°F (15°C) WB, and outdoor temperature of 47°F (8.33°C) DB/43°F (6.11°C) WB.
 Pipe length: 24ft. 7in. (7.5m). Height difference: 0ft. (0m) (Outdoor unit - indoor unit)



Dimensions: 18RULX

[Unit: in. (mm)]



The Fujitsu logo is a registered trademark of Fujitsu Limited.
 The Halcyon logo and name is a trademark of Fujitsu General America, Inc. Copyright 2016 Fujitsu General America, Inc.
 Fujitsu's products are subject to continuous improvements. Fujitsu reserves the right to modify product design, specifications and information in this brochure without notice and without incurring any obligations.

FUJITSU
 Fujitsu General America, Inc.
 353 Route 46 West
 Fairfield, NJ 07004
 Toll Free: 1-888-888-3424
 Fax: (973) 836-0447
www.fujitsugeneral.com