

Inverter Driven Heat Pump

48,000 BTU Circular Flow Cassette

Job Name _____
 Location _____
 Engineer _____
 Submitted To _____
 Submitted By _____
 Reference _____

Date _____
 Approval _____
 Construction _____
 Unit No _____
 Drawing No _____

PRODUCT FEATURES

- 360° Circular flow distributes air more evenly around the room
- Adjustable louver swing
- Adjustable airflow
- Optional human sensor detects room occupancy for energy savings
- 7mm High density heat exchanger
- Seamless airflow louver
- Grille available in White (UTG-GCGF) or Black (UTG-LCGVCB), sold separately



MODEL NUMBERS

Indoor Unit	AUU48RGLX
Outdoor Unit	AOU48RGLX
System	48RGLXC

EFFICIENCIES

SEER	17.8
EER	10.1
HSPF	10.6
COP	11.8

OUTDOOR TEMPERATURE OPERATION RANGE

Cooling	*F(°C)	-5 to 115 (-20 to 46)
Heating		-5 to 75 (-20 to 24)

CAPACITIES

	Rated	Min.-Max.	BTU/hW
Cooling			48,000
			17,100-50,000
Heating			53,000
			18,000-55,000

LINESET REQUIREMENTS

Connection Method		Flare
Liquid	in (mm)	Ø 3/8 (9.52)
		Ø 5/8 (15.88)
Pre-Charge Length	ft (m)	98 (30)
Minimum Length		16 (5)
Maximum Length		246 (75)
Max. Height Diff.		98 (30)

INDOOR DIMENSIONS & WEIGHT

Net (H x W x D)	in	11-5/16 x 33-1/16 x 33-1/16
	mm	288 x 840 x 840
Gross (H x W x D)	in	13-3/8 x 37-13/16 x 37-3/8
	mm	340 x 960 x 950
Net Weight	lb (kg)	64 (29)
Gross Weight		73 (33)

OUTDOOR DIMENSIONS & WEIGHT

Net (H x W x D)	in	50-13/16 x 35-7/16 x 13
	mm	1,290 x 900 x 330
Gross (H x W x D)	in	57-1/2 x 41-5/16 x 17-1/2
	mm	1,460 x 1,050 x 445
Net Weight	lb (kg)	209 (95)
Gross Weight		231 (105)

Warranty Information



7 Year Compressor, 5 Year Parts out-of-the-box Warranty



10 Year Compressor, 10 Year Parts Warranty when registered within 30 days of installation in a residence



12 Year Compressor, 12 Year Parts Warranty when registered within 30 days of installation in a residence, and installed by a Fujitsu Elite contractor

ACCESSORIES

UTG-GCGF	White Cassette Grille
UTG-LCGVCB	Black Cassette Grille
UTY-RNRUZ2	Wired Remote Control
UTY-RSRY	Simple Remote Control
UTY-LBTUC	IR Receiver Kit w/ Wireless Remote
UTY-SHZXC	Human Sensor Kit
UTY-TTRX	Third Party Thermostat Adapter



Indoor Unit ETL#: 3170288
 Outdoor Unit ETL#: 91987

Due to continuous product improvements, specifications are subject to change without notice. Please log in to the Fujitsu Portal for the most up-to-date documentation <https://portal.fujitsugeneral.com>

Inverter Driven Heat Pump

48,000 BTU Circular Flow Cassette

FAN DATA

Indoor Unit Airflow Rate	Cooling	High	CFM (m3/h)	1,236 (2,100)
		Medium		1,048 (1,780)
		Low		942 (1,600)
		Quiet		777 (1,320)
	Heating	High		1,236 (2,100)
		Medium		1,048 (1,780)
		Low		942 (1,600)
		Quiet		777 (1,320)
Outdoor Unit Airflow Rate	Cooling		4,061 (6,900)	
	Heating		4,091 (6,950)	

SOUND PRESSURE

Indoor Unit	Cooling	High	dB (A)	47
		Medium		43
		Low		40
		Quiet		36
	Heating	High		47
		Medium		43
		Low		40
		Quiet		36
Outdoor Unit	Cooling		57	
	Heating		59	

REFRIGERANT

Type	R410A		
Charge	lb oz	7 lb 10.1oz	
	g	3,450	
Oil Type	POE (RB68)		

CASSETTE GRILL (SOLD SEPARATELY)

Color	UTG-GCGF	White		
	UTG-LCGVB	Black		
Dimensions (H x W x D)	Net	in (mm)	2- 1/16 x 37-3/8 x 37 3/8	
			(53 x 950 x 950)	
	Gross		4-5/16 x 39-3/8 x 39-3/4	
			(110 x 1,000 x 1,000)	
Weight	Net	lb (kg)	13 (6.0)	
	Gross		22 (10)	

ELECTRICAL SPECIFICATIONS

Voltage/Frequency/Phase			208-230V/60Hz/1	
Voltage Range			187-253 V	
Current	Cooling	Rated	A	20.9
	Heating	Rated		19.7
Maximum Operating Current		Cooling		22.2
	Heating	20.7		
Starting Current			20.9	
MCA			28.3	
Maximum Circuit Breaker			30	
Input Power	Cooling	Rated	kW	4.75
		Min.-Max.		0.63-4.91
	Heating	Rated		4.49
		Min.-Max.		0.55-4.67
Power Factor	Cooling	% 97		
	Heating	% 97		
OTHER				
Moisture Removal		pints/h (L/h)		9.3 (5.3)
Energy Star		No		
Drain hose		Material		PVC (VP25)
		Size		in (mm) Ø 1 (25) (I.D.), Ø 1-1/16 (26.6)
Operation Range	Cooling	°F (°C)		64 to 90 (18 to 32)
		%RH		80 or less
	Heating	°F (°C)		60 to 86 (16 to 30)

The Fujitsu logo is a worldwide trademark of Fujitsu General Limited. The Halcyon logo and name is a worldwide trademark of Fujitsu General Limited and is a registered trademark in Japan, the USA and other countries or areas. Copyright 2018 Fujitsu General America, Inc. Fujitsu's products are subject to continuous improvements. Fujitsu reserves the right to modify product design, specifications and information in this brochure without notice and without incurring any obligations.

Note: Specifications are based on the following conditions:
 Cooling: Indoor temperature of 80°F (26.7°C) DB/67°F (19.4°C) WB, and outdoor temperature of 95°F (35°C) DB/75°F (23.9°C) WB. Heating: Indoor temperature of 70°F (21.1°C) DB/60°F (15.6°C) WB, and outdoor temperature of 47°F (8.3°C) DB/43°F (6.1°C) WB. Pipe length: 25ft. (7.5m), Height difference: 0ft. (0m) (Outdoor unit - indoor unit).

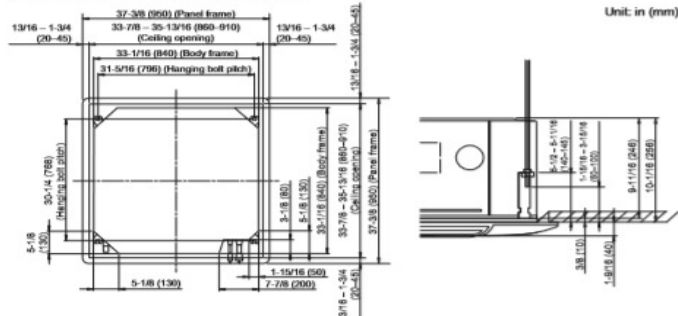
Inverter Driven Heat Pump

48,000 BTU Circular Flow Cassette

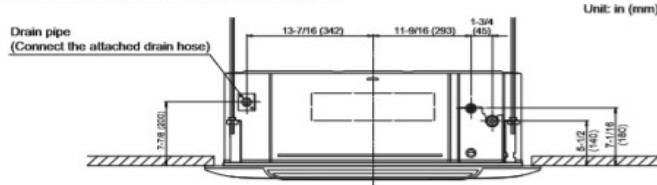
DIMENSIONS

Units: In. (mm)

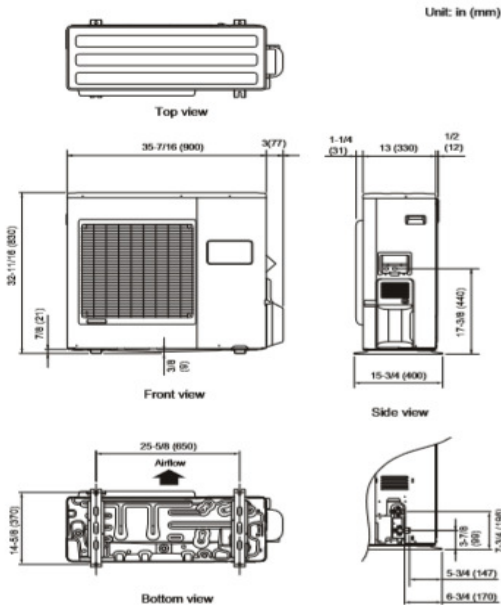
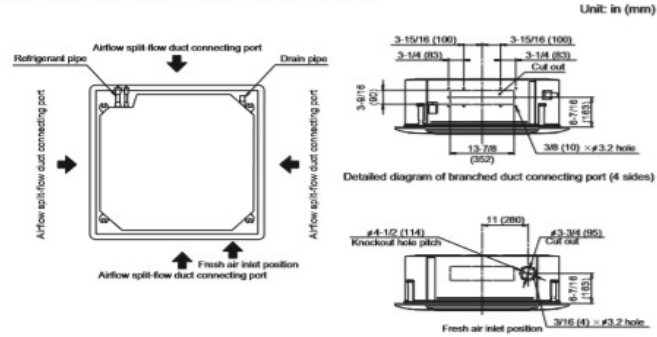
• Ceiling opening and hanging bolt pitch



• Refrigerant piping and drain piping positions



• Airflow split-flow duct and fresh-air inlet positions



The Fujitsu logo is a worldwide trademark of Fujitsu General Limited. The Halcyon logo and name is a worldwide trademark of Fujitsu General Limited and is a registered trademark in Japan, the USA and other countries or areas. Copyright 2018 Fujitsu General America, Inc. Fujitsu's products are subject to continuous improvements. Fujitsu reserves the right to modify product design, specifications and information in this brochure without notice and without incurring any obligations.

Note: Specifications are based on the following conditions:
 Cooling: Indoor temperature of 80°F (26.7°C) DB/67°F (19.4°C) WB, and outdoor temperature of 95°F (35°C) DB/75°F (23.9°C) WB. Heating: Indoor temperature of 70°F (21.1°C) DB/60°F (15.6°C) WB, and outdoor temperature of 47°F (8.3°C) DB/43°F (6.1°C) WB. Pipe length: 25ft. (7.5m). Height difference: 0ft. (0m) (Outdoor unit - indoor unit).