

**Model CR, Type RF and SF (Restaurant Curb)**

Designed to comply with applicable NFPA [National Fire Protective Association] code requirements as well as a variety of local requirements, specialized restaurant curbs are made with the same rugged features found in the standard RF and SF style curbs. In addition, units can be equipped with 4" x 1/2" ventilation slots (insulation not furnished) to release trapped heat from kitchen exhaust ducts.



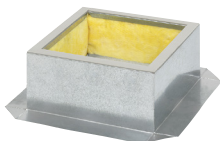
**Model CS, Type RF and SF (Sound Curb)**

A special sound absorbing curb designed for use with power roof ventilators where quiet operation is required. Designed with streamlined air flow passages using a core of modular sound absorbing cells of special fiberglass held in a galvanized steel frame. Reduces roof fan noise transmitted back into the room or auditorium by approximately 40%. Features the same rugged all-welded construction as our standard RF and SF style curbs. Standard height is 16". For more information refer to [www.acmefan.com/pdfs/SoundCurb.PDF](http://www.acmefan.com/pdfs/SoundCurb.PDF)



**Model CH, Type SF (Hurricane Curb)**

Built with continuous welded seams with wide integral base plate to insure adequate roofing surface bond for watertight weather seal. Furnished with 1/4" polystyrene gasket secured to top ledge of curb. Heavy-Duty 18 gauge galvanized steel up to size 34"; size 34" and above are 16 gauge galvanized steel. See fan Installation and Maintenance Instructions for fastener information – [www.acmefan.com/literature.htm](http://www.acmefan.com/literature.htm)



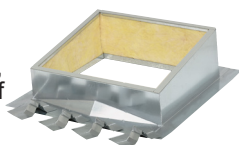
**Model CRH, Type SF (Hurricane Restaurant Curb)**

Designed to comply with applicable NFPA [National Fire Protective Association] code requirements as well as a variety of local requirements, specialized hurricane restaurant curbs are made with the same rugged features found in standard SF-style hurricane curbs. In addition, units can be equipped with 4" x 1/2" ventilation slots (insulation not furnished) to release trapped heat from kitchen exhaust ducts. Heavy-Duty 18 gauge galvanized steel up to size 34"; size 34" and above are 16 gauge galvanized steel. See fan Installation and Maintenance Instructions for fastener information – [www.acmefan.com/literature.htm](http://www.acmefan.com/literature.htm)



**Model CMR (Metal Roof Curb)**

Metal roof curbs come in 4 styles depending on the roof type: Self-Flashing, Loose Clips, Welded Clips, Over/Under Welded Clips. Metal roof curbs feature continuously welded seams and rib pockets (Loose Clip Curbs), and are lined with 1-1/2" fiberglass insulation. Curbs are furnished with 1/4" polystyrene gasket on top ledge and cricket-style water diverter to prevent ponding water. For more information please consult factory.



**Model CVE (Vented Curb Extension)**

Vented curb extensions are constructed of 18 gauge galvanized steel or .063 aluminum and have continuous welded seams for watertight construction. Comes standard with 1/4" polystyrene gasket on top ledge, and 4" x 1/4" vents on each side. Custom made to any size and height. Standard height is 8".



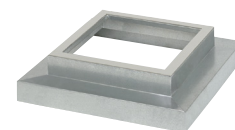
**Model CE (Curb Extension)**

Curb Extensions are constructed of 18 gauge galvanized steel or .063 aluminum and have continuous welded seams for watertight construction. Comes standard with 1/4" polystyrene gasket on top ledge, built-in back draft damper shelf and removable access panel. Custom made to any size and height. Standard height is 13".



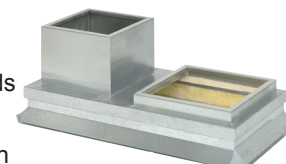
**Model CA (Curb Adapter)**

Curb Adapters are designed to fit new equipment to existing curbs. They are constructed of 18 gauge galvanized steel with continuous welded seams and a 1/4" polystyrene gasket on top ledge. Available as a reducing or enlarging adapter.



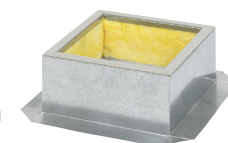
**Model CCA (Combo Curb Adapter)**

The combo curb adapter is constructed of 18 gauge galvanized steel with continuous welded seams and meet the needs of modern kitchen construction, allowing both the exhaust and supply ducting to share a common roof opening (Curb not included).



**Model CLE, Type SF (Lab Curb)**

Built with continuous welded seams with wide integral base plate to insure adequate roofing surface bond for watertight weather seal. Furnished with 1/4" polystyrene gasket secured to top ledge of curb. Heavy-Duty 12 gauge galvanized steel construction.



Shown with optional insulation