



# Parts Manual

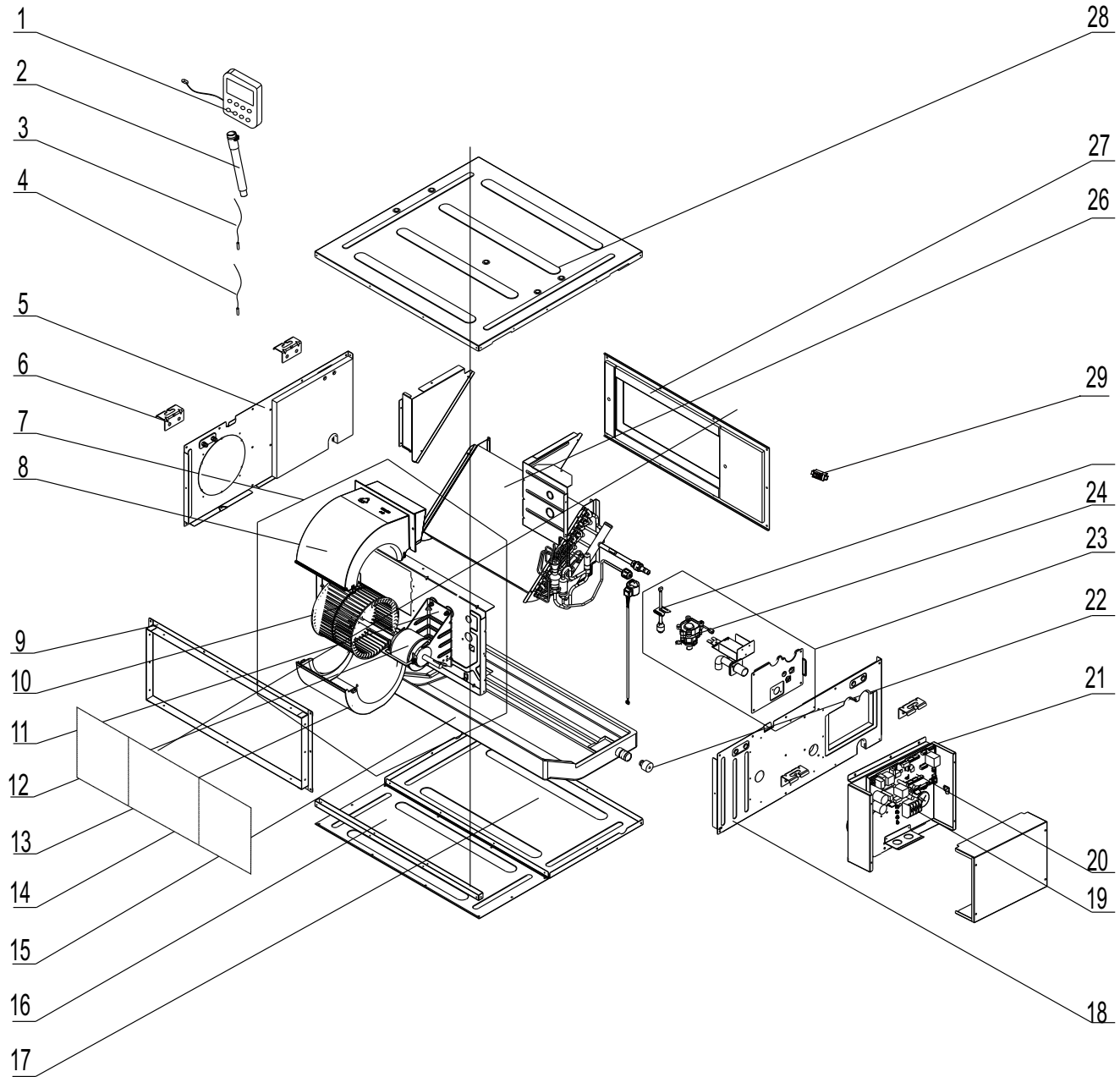
Models: DUCT09HP230V1BD  
DUCT12HP230V1BD  
DUCT18HP230V1BD  
GFH(21)DB-D3DNA1A/I  
DUCT24HP230V1BD  
(Refrigerant R410A)

**GREE ELECTRIC APPLIANCES, INC. OF ZHUHAI**

The background features a network of thin, light gray lines connecting various circular nodes, some of which are shaded in light blue or gray. At the bottom, there are large, overlapping geometric shapes in shades of blue and teal, with a faint image of a modern building's facade visible in the bottom right corner.

# Exploded View and Parts List

DUCT09HP230V1BD DUCT12HP230V1BD

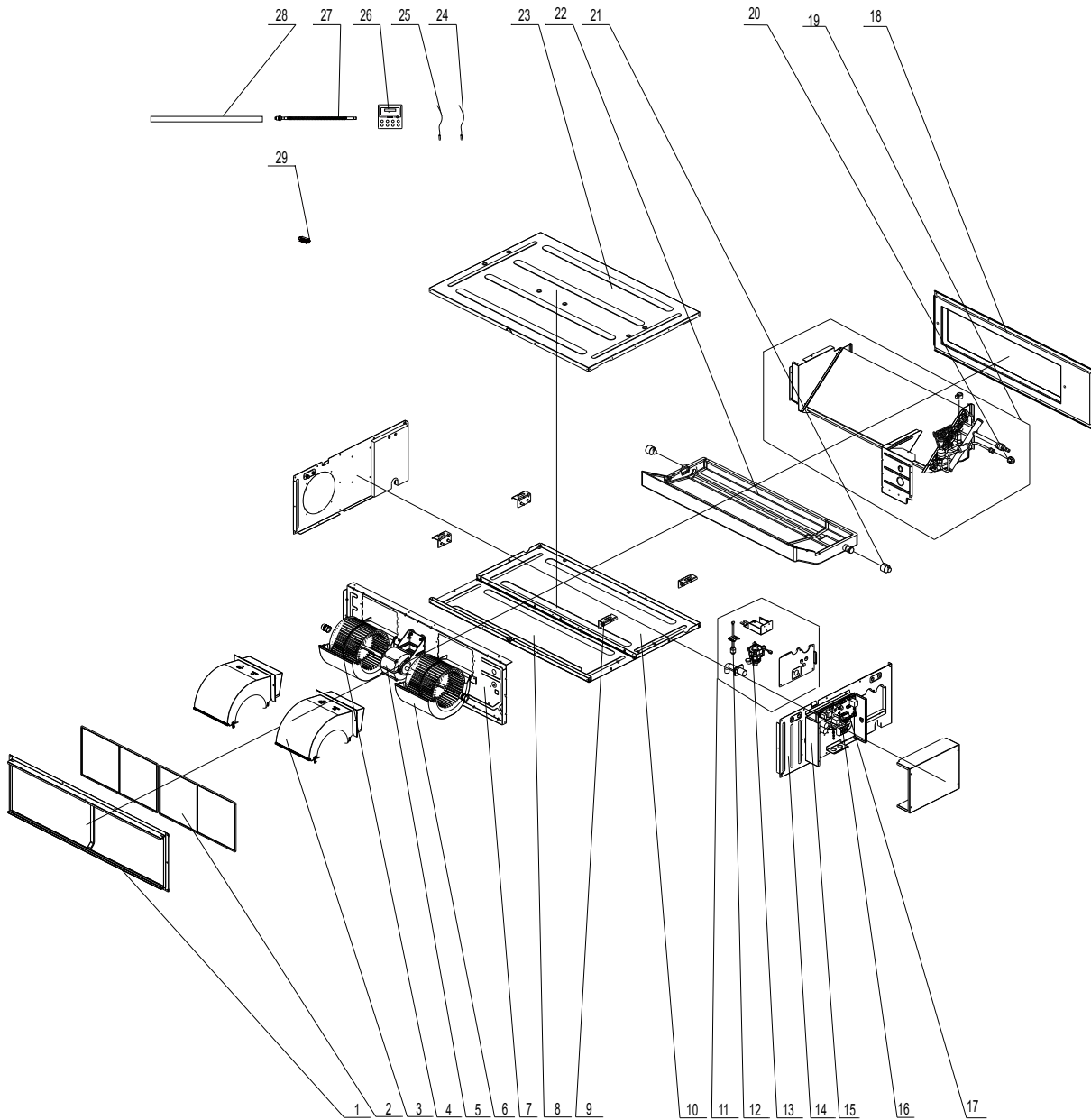


The component picture is only for reference; please refer to the actual product.

NO.	Description	Part Code		Qty
		DUCT09HP230V1BD	DUCT12HP230V1BD	
		Product Code	Product Code	
1	Wired controller	30564103	30564103	1
2	Drain Hose Sub-Assy	05232050	05232050	1
3	Temperature Sensor	390000592	390000592	1
4	Temperature Sensor	390000454	390000454	1
5	Right Side Plate Assy	01315200148	01315200148	1
6	Hook	02112466	02112466	4
7	Centrifugal Fan Assy	000052060068	000052060068	1
8	Propeller Housing(Upper)	26905200078	26905200078	1
9	Air IN Frame Assy	017026000004	017026000004	1
10	Centrifugal Fan	10455200003	10455200003	1
11	Supporter(Fan motor)	0180520027201	0180520027201	1
12	DC Motor	1570520000502	1570520000502	1
13	Propeller Housing(Lower)	26905200079	26905200079	1
14	Filter Sub-Assy	111001000055	111001000055	1
15	Foam Sub-assy	12505200038	12505200038	1
16	Cover Of Air-In	01265200182	01265200182	1
17	Bottom Cover Plate	01265200181	01265200181	1
18	Left Side Plate Assy	01315200147	01315200147	1
19	Terminal Board	420001000002	420001000002	1
20	Main Board	300002000879	300002000879	1
21	Electric Box Sub-Assy	0139410055601	0139410055601	1
22	Choke Plug of Drain Pipe	76815214	76815214	2
23	Seal plate Assy	01495200079	01495200079	1
24	Water Pump	43138000058	43138000058	1
25	Water Level Switch	45020216	45020216	1
26	Evaporator Assy	011001060108	011001060099	1
27	Air Outlet Frame Assy	01374100070	01374100070	1
28	Top Cover Board Assy	01264100081	01264100081	1
29	Jump	4202021901	4202021902	1

Above data is subject to change without notice.

DUCT18HP230V1BD GFH(21)DB-D3DNA1A/I DUCT24HP230V1BD



The component picture is only for reference; please refer to the actual product.

NO.	Description	Part Code			Qty
		DUCT18HP230V1BD	GFH(21)DB-D3DNA1A/I	DUCT24HP230V1BD	
	Product code	CF022N1390	CF022N1410	CF022N1430	
1	Air in Frame Assy	01702600002	01702600002	01702600002	1
2	Filter Sub-Assy	111001000045	111001000045	111001000045	1
3	Propeller Housing(Upper)	26905200078	26905200078	26905200078	1
4	Centrifugal Fan	10455200003	10455200003	10455200003	1
5	Brushless DC Motor	15705200016	15705200016	15705200016	1
6	Propeller Housing(Upper)	26905200078	26905200078	26905200078	1
7	Blower Mounting Plate Sub-Assy	01325200079	01325200079	01325200079	1
8	Cover Of Air-In	01265200132	01265200132	01265200132	3
9	Hook	02112466	02112466	02112466	1
10	Bottom Cover Plate	01265200131	01265200131	01265200131	1
11	Seal plate Assy	01495200079	01495200079	01495200079	1
12	Water Level Switch	45020216	45020216	45020216	1
13	PUMP	43138000058	43138000058	43138000058	1
14	Left Side Plate Assy	01315200147	01315200147	01315200147	1
15	Electric Box Sub-Assy	0139410055601	0139410055601	0139410055601	1
16	Terminal Board	420001000002	420001000002	420001000002	1
17	Main Board	300002000879	300002000879	300002000879	1
18	Air Outlet Frame Assy	01375200026	01375200026	01375200026	1
19	Evaporator Assy	011001060109	011001060109	011001060109	1
20	Sealing Cap(Pressure Warning)	2611219201	2611219201	2611219201	1
21	Choke Plug of Drain Pipe	76815214	76815214	76815214	1
22	Foam Sub-assy	12505200025	12505200025	12505200025	1
23	Top Cover Board Assy	01265200130	01265200130	01265200130	1
24	Temperature Sensor	390000454	390000454	390000454	1
25	Temperature Sensor	390000592	390000592	390000454	1
26	Wired controller	30564103	30564103	30564103	1
27	Corrugated Pipe	05015408	05015408	05015408	1
28	Drain Hose Sub-Assy	05232050	05232050	05232050	1
29	Jump	4202021903	4202021904	4202021905	1

Above data is subject to change without notice.