

INSTALLATION GUIDE

IN-LINE MIXED FLOW TURBO TUBE FANS

TT PRO 100/125/150



INSTALLATION

Tools required



Pencil



Drill



Screwdriver



Dowel (4 pcs.)

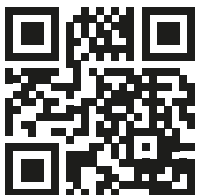
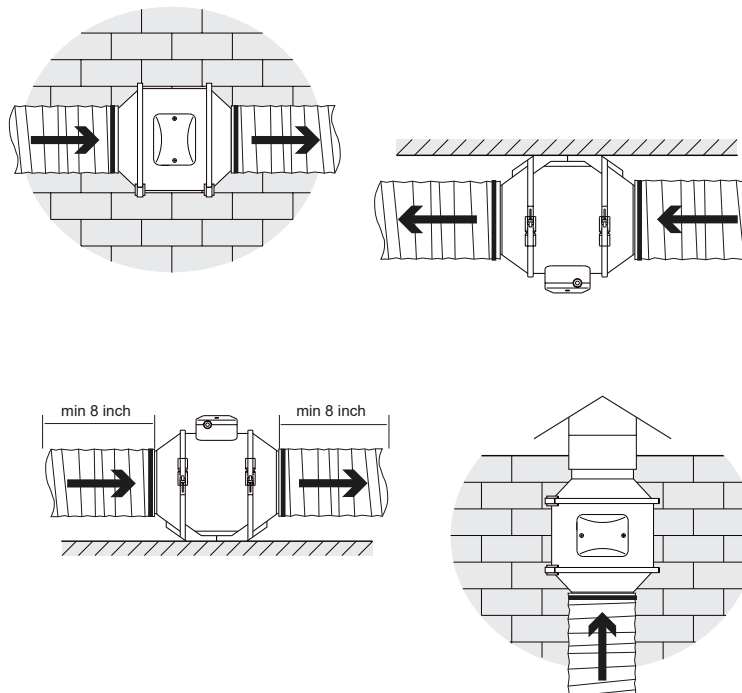


Screws (4 pcs.)

MOUNTING

Fans may be mounted either vertically or horizontally. We recommend minimum 8' of insulated flexible duct between any exhaust grill and fan for low noise level. Outlet flange should always be connected to an air duct.

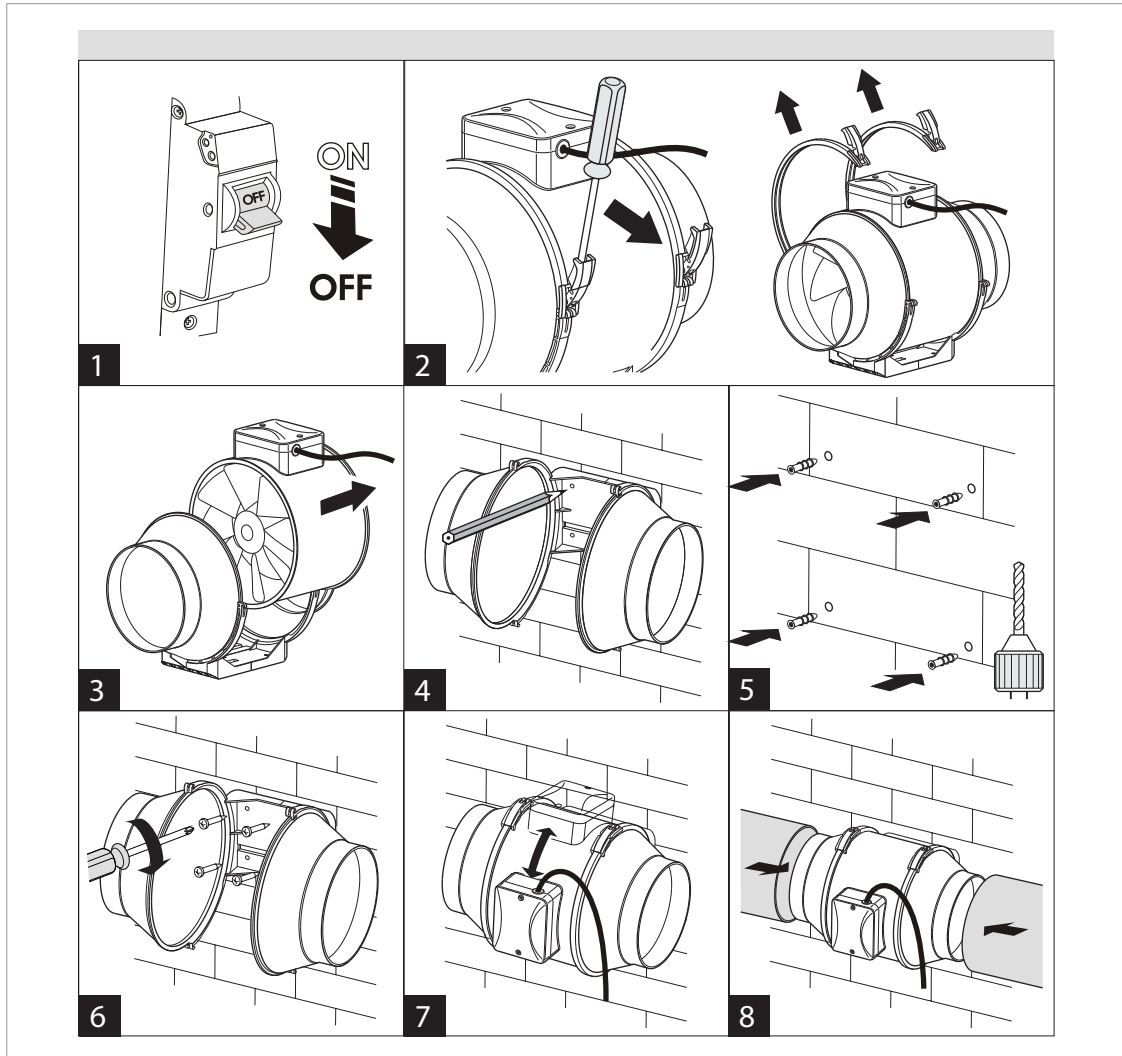
Typical installation of the fan



www.ventsus.com

Bodor Vents, LLC DBA: VENTS-US
 11013 Kenwood Road Cincinnati, Ohio 45242
 Phone: (513)348-3853
 e-mail: sales@ventsus.com

- 1) Disconnect the fan from power supply.
- 2) Deinstall the fixing brackets.
- 3) Remove the fan from the casing.
- 4) Mark holes on the wall.
- 5) Drill the holes and insert the expansion anchors.
- 6) Fix the fan.
- 7) Install the fan into the casing
- 8) Connect air ducts



The fan must be connected using durable, insulated and heat-resistant cables and wires.

Connect the cables according to the wiring diagram.

Connection of the fan and standard wall socket

