





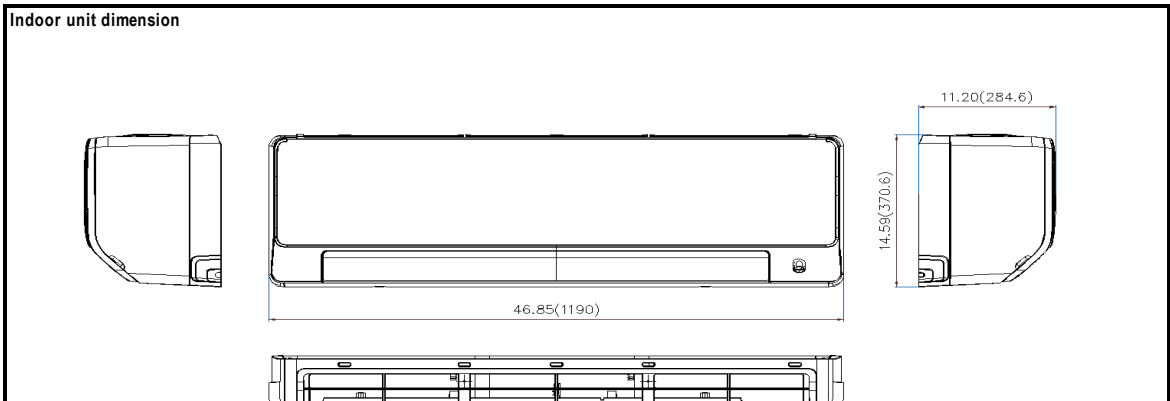
SUBMITTAL DATA SHEET

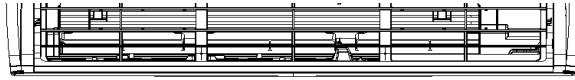
ACIQ-24W-HH-MB	24,000 BTU/H(208/230V)	Wall Mounted Heat Pump System
Location: _____	Approval: _____	
Engineer: _____	Date: _____	
Submitted to: _____	Construction: _____	
Submitted by: _____	Unit #: _____	
Reference: _____	Drawing #: _____	

Indoor unit code	22022011016422
Set Model	
Indoor unit model	ACIQ-24W-HH-MB
Certified	AHRI  UL 



INDOOR UNIT DATA		
Indoor fan motor		
Type		Cross-Flow
Model		ZKFP-58-8-1-6
Qty		1
Input	(W)	58.0
RLA	(A)	0.5
LRA	(A)	---
Winding Resistance	(Ω)	---
Capacitor	(uF)	---
Speed(Hi/Mi/Lo)	(r/min)	1000/850/700
Air flow & Noise level		
Indoor air flow (Hi/Med/Lo) (h)	(CFM)	611.18/414.12/318.82
Indoor noise level (Hi/Med/Lo)	[dB(A)]	44/39.5/34
Dehumidification	(Pint/H)	---
Indoor unit		
Dimension (WxDxH)	(inch)	46.85x11.20x14.59
	(mm)	1190x284.6x370.6
Packing(WxDxH)	(inch)	50.39x14.17x17.91
	(mm)	1280x360x455
Net/Gross weight	(lbs.)	43.65/54.89
	(kg)	19.8/24.9
Indoor(cooling)	(Deg. °F / °C)	Inner groove tube / Φ7
Indoor(heating)	(Deg. °F / °C)	1.3 / 21x13.37
Application area	(sq.ft)	1.3
	(m2)	21x13.37





General Features

- Intelligent Eye(optional)
- Easy Installation
- Easy Maintenance
- Easy Clean
- High Efficiency
- Wireless Remote with LCD Display

Extended Performance Data

