



Submittal Data Sheet

Indoor Unit Model#: ACiQ-36-ACL-17-B

Outdoor Unit Model#: ACiQ-30-HPD

36K 17" EVAPORATOR A-COIL & 30K EXT. HEAT PUMP CONDENSER

| | |
|---------------|---------------|
| Location: | Approval: |
| Engineer: | Date: |
| Submitted to: | Construction: |
| Submitted by: | Unit #: |
| Reference: | Drawing #: |

System Product Code: 810175552859
A-Coil Product Code: 810175552668
Outdoor Unit Product Code: 810175550572



INDOOR UNIT SPECIFICATIONS

| | | |
|-------------------|------|--------------------------|
| Dimension (W×D×H) | inch | 17-1/2 x 21 x 23-1/2 |
| | mm | 445 × 533 × 599 |
| Package (W×D×H) | inch | 20-1/2 x 26-1/8 x 26-3/8 |
| | mm | 520 × 665 × 670 |
| Net/Gross Weight | lbs | 59.5 / 68 |
| | kg | 27 / 30.9 |

OUTDOOR UNIT SPECIFICATIONS

| | | |
|------------------------------|----------------|--------------------------|
| Compressor Type | ROTARY | |
| Compressor Model | MTH356UKRC8FQL | |
| Refrigerant | R454B | |
| Refrigerant Oil Charge (mL) | 1300 | |
| Refrigerant Oil | HAF68D1A | |
| Outdoor Air Flow (Max) (CFM) | 3,002 | |
| Outdoor Noise Level (dBA) | 64 | |
| Dimension (W×D×H) | inch | 37-1/4 x 16-1/8 x 31-7/8 |
| | mm | 946 × 410 × 810 |
| Package (W×D×H) | inch | 42-7/8 x 19-5/8 x 34-7/8 |
| | mm | 1090 × 500 × 885 |
| Net/Gross Weight | lbs | 164 / 175 |
| | kg | 74.4 / 79.2 |

EFFICIENCY RATINGS

| Cooling | | Heating | |
|---------|------|---------|------|
| SEER2 | 16.0 | HSPF2-4 | 10.0 |
| EER2 | 10.0 | COP | 3.37 |

COOLING PERFORMANCE

| Cooling (Btu/hr) | |
|----------------------------------|--------------------------|
| Rated Capacity | 29,000 |
| Min/Max Capacity | 13,900~37,900 |
| Moisture Removal (L/h) | 3.7 |
| Standard Operating Range (°F/°C) | -22~122 (-30~50) |
| Rated Cooling Conditions: | Indoor: 80°F DB/67°F WB |
| | Outdoor: 95°F DB/75°F WB |

HEATING PERFORMANCE

| Heating (Btu/hr) | |
|----------------------------------|--------------------------|
| 1. @ 47°F Rated | 32,000 |
| 1. @ 47°F Min/Max Capacity | 13,00~40,000 |
| 2. @ 17°F Rated | 25,000 |
| 3. @ 5°F Rated: Capacity / COP | 33000 / 1.9 |
| 3. @ 5°F Max. Capacity | 33,000 |
| Standard Operating Range (°F/°C) | -22~75 (-30~24) |
| 1. Rated Heating Conditions: | Indoor: 70°F DB/60°F WB |
| | Outdoor: 47°F DB/43°F WB |
| 2. Rated Heating Conditions: | Indoor: 70°F DB/60°F WB |
| | Outdoor: 17°F DB/15°F WB |
| 3. Heating Conditions* | Indoor: 70°F DB/60°F WB |
| | Outdoor: 5°F DB/5°F WB |

*Compressor Operating at Max. Frequency

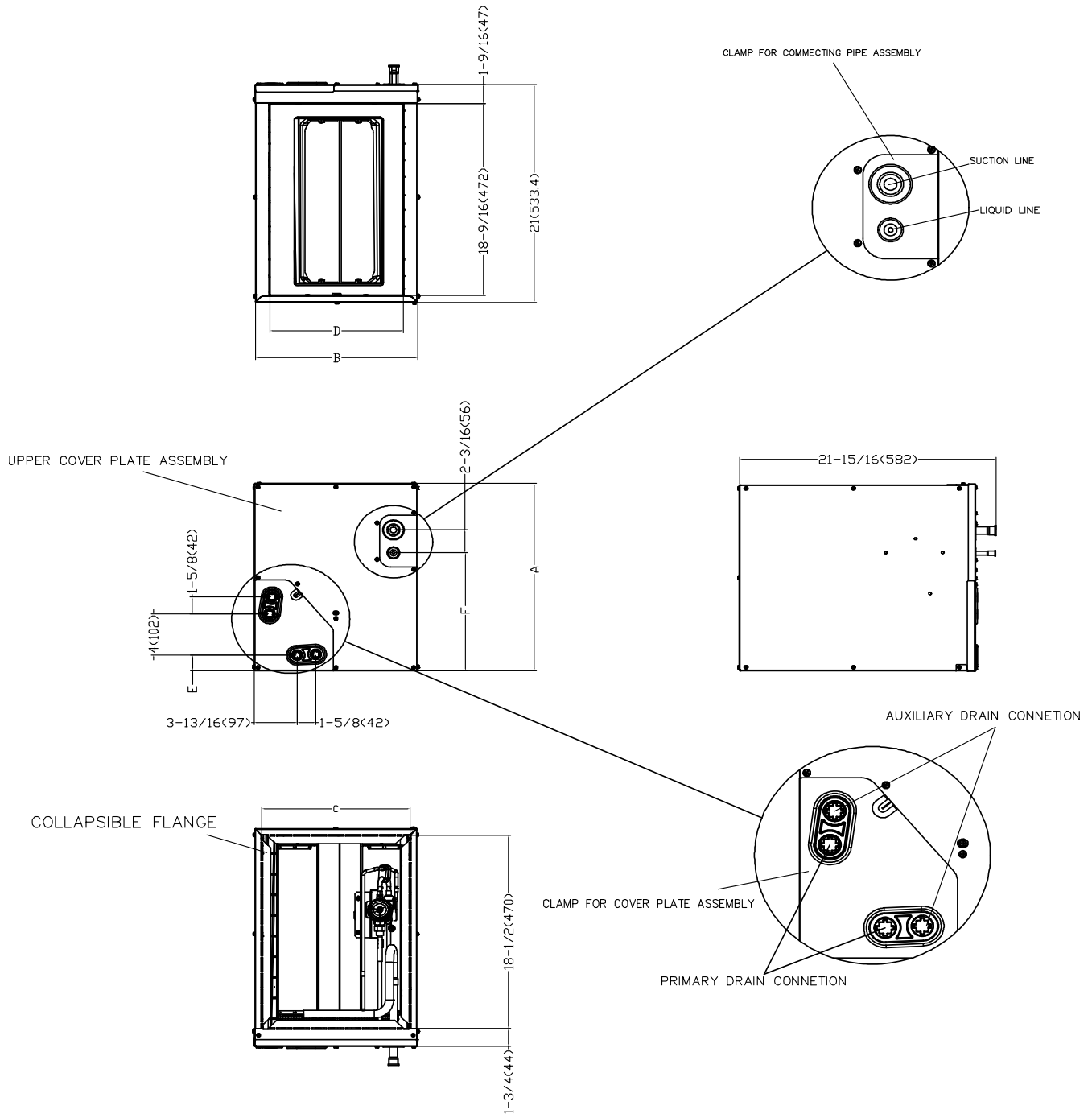
ELECTRICAL SPECIFICATIONS

| | |
|----------------------------------|--------------------------------------|
| Indoor Power Supply | 24V, 60Hz, 1Ph |
| Indoor MCA 115V/(208/230V) | N/A |
| Indoor MOP | N/A |
| Outdoor Power Supply | 208/230, 60Hz, 1Ph |
| Outdoor MCA | 29.5 |
| Outdoor MOP | 30 |
| Communication Wiring | AWG 20-2 |
| Compressor RLA | 22.4 |
| Outdoor Fan Motor RLA | 1.5 |
| Outdoor Fan Motor W | N/A |
| Indoor Fan Motor RLA | N/A |
| Indoor Fan Motor W | N/A |
| System Power Input @ Cooling (W) | 2900 (1,160 ~ 3,740) |
| System Power Input @ Heating (W) | 2780 (1,088~3,482) |
| MCA: Min. circuit amps (A) | MOP: Max. overcurrent protection (A) |
| RLA: Rated load amps (A) | W: Fan motor rated output (W) |

REFRIGERANT PIPING SPECIFICATIONS

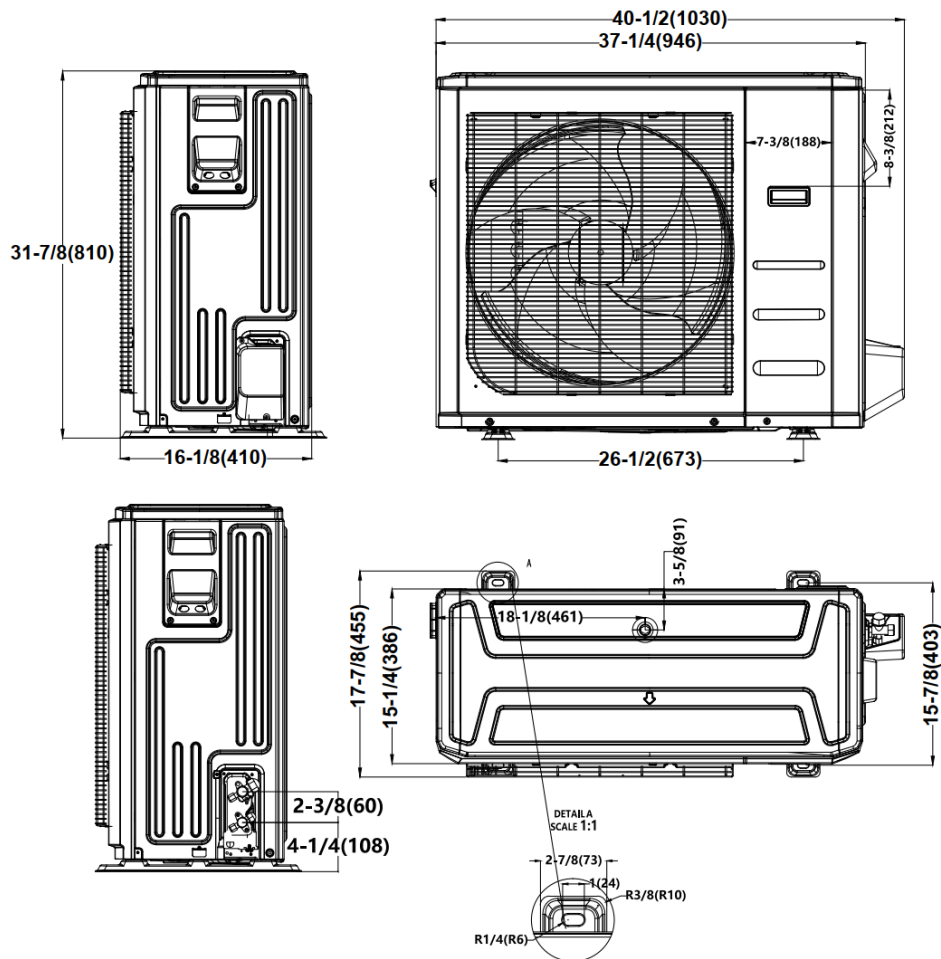
| | |
|--|------------------|
| Throttle type (Indoor) | EXV |
| Throttle type (Outdoor) | EXV |
| Liquid Size | 9.52 mm (3/8 in) |
| Gas Size | 19 mm (3/4 in) |
| Max. Piping Length (ft/m) | 164 (50) |
| Max. Height Difference (ft/m) | 82 (25) |
| Max. Pre-charged Length (ft/m) | 24.6 (7.5) |
| Refrigerant Pre-charged Amount (oz/kg) | 105.82 (3) |
| Additional Charge of Refrigerant ((oz/ft)/(g/m)) | 0.7 (65) |
| Connection Method | Flared |

INDOOR UNIT DIMENSIONS

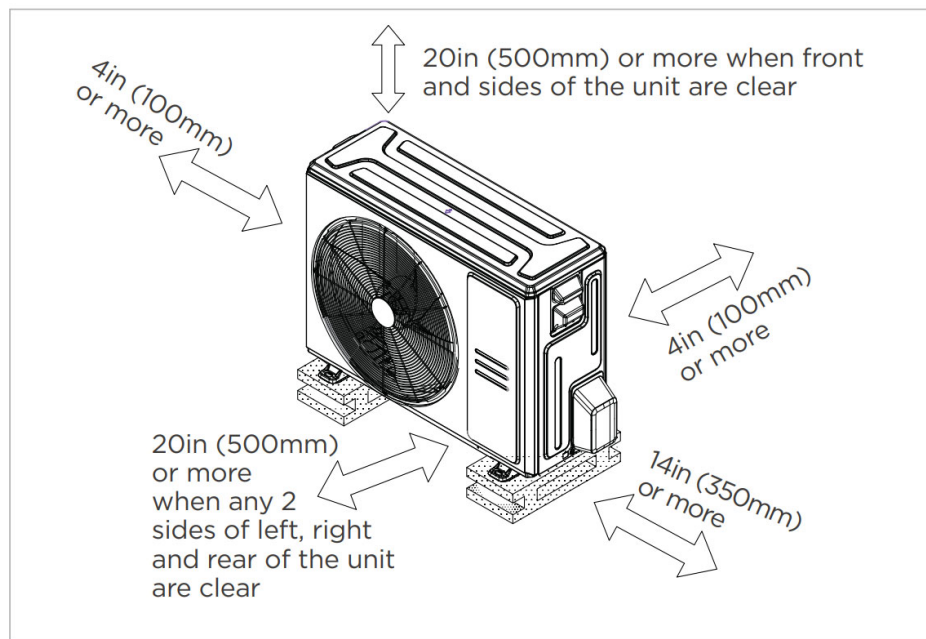


| Model | | ACiQ-24-ACL-B | ACiQ-24-ACL-14-B | ACiQ-36-ACL-B | ACiQ-36-ACL-17-B | ACiQ-48-ACL-B | ACiQ-60-ACL-B |
|-------|--------------------------|-------------------|-------------------|-------------------|-------------------|-------------------|-------------------|
| | | inch (millimeter) | inch (millimeter) | inch (millimeter) | inch (millimeter) | inch (millimeter) | inch (millimeter) |
| A | Unit Height | 18 (457) | 18 (457) | 24 (611) | 23-9/16 (599) | 27-3/4 (706) | 28 (711) |
| B | Unit Width | 17-1/2 (445) | 14-1/2 (368) | 21 (534) | 17-1/2 (445) | 21-5/8 (549) | 24-1/2 (622) |
| C | Supply Air Opening Width | 16-3/16 (411) | 13-1/4 (336) | 19-3/4 (502) | 16-3/16 (411) | 21-1/4 (514) | 23-1/4 (591) |
| D | Return Air Opening Width | 14-15/16 (380) | 11-15/16 (303) | 19-1/2 (498) | 14-15/16 (380) | 20 (509) | 23-1/8 (587) |
| E | Condensate Drain Height | 1-7/16 (38) | 1-7/16 (38) | 2-3/16 (55) | 1-7/16 (38) | 2-1/8 (50) | 2-3/16 (55) |
| F | Liquid Line Height | 11-3/8 (290) | 11-3/8 (290) | 17-1/2 (445) | 16-3/8 (417) | 17-5/8 (449) | 21-7/16 (545) |

OUTDOOR UNIT DIMENSIONS



INSTALLATION INSTRUCTIONS FOR OUTDOOR UNIT



☒ Meets all spatial requirements shown in Installation Clearance Requirements above.

FEATURES

- Multi-position installation: horizontal (left or right), vertical (up or down)
- Aluminum Coil
- R454B refrigerant sensor
- Easy Maintenance
- Multiple control options available:
 - Two way communication wired controller with built-in WiFi:120N(X6W)
 - Third-Party 24V Thermostat