



Submittal Data Sheet

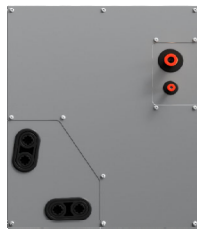
Indoor Unit Model#: ACiQ-36-ACL-17-B

Outdoor Unit Model#: ACiQ-36-EHPD

36K 17" EVAPORATOR A-COIL & 36K STD. HEAT PUMP CONDENSER

Location:	Approval:
Engineer:	Date:
Submitted to:	Construction:
Submitted by:	Unit #:
Reference:	Drawing #:

System Product Code: 810175552767
A-Coil Product Code: 810175552668
Outdoor Unit Product Code: 810175550459



INDOOR UNIT SPECIFICATIONS

Dimension (W×D×H)	inch	17-1/2 x 21 x 23-1/2
	mm	445 x 533 x 599
Package (W×D×H)	inch	20-1/2 x 26-1/8 x 26-3/8
	mm	520 x 665 x 670
Net/Gross Weight	lbs	59.5 / 68
	kg	27 / 30.9

OUTDOOR UNIT SPECIFICATIONS

Compressor Type		ROTARY
Compressor Model		KTF310D43UMT
Refrigerant		R454B
Refrigerant Oil Charge (mL)		1,000
Refrigerant Oil		VG74
Outdoor Air Flow (Max) (CFM)		2,413
Outdoor Noise Level (dBA)		63
Dimension (W×D×H)	inch	37-1/4 x 16-1/8 x 31-7/8
	mm	946 x 410 x 810
Package (W×D×H)	inch	42-7/8 x 19-5/8 x 34-7/8
	mm	1090 x 500 x 885
Net/Gross Weight	lbs	153 / 164
	kg	69.5 / 74.2

EFFICIENCY RATINGS

Cooling		Heating	
SEER2	14.8	HSPF2-4	8.7
EER2	10.2	COP	3.40

COOLING PERFORMANCE

Cooling (Btu/hr)	
Rated Capacity	36,000
Min/Max Capacity	10,400~38,800
Moisture Removal (L/h)	4
Standard Operating Range (°F/°C)	-13~122 (-25~50)
Rated Cooling Conditions:	Indoor: 80°F DB/67°F WB
	Outdoor: 95°F DB/75°F WB

HEATING PERFORMANCE

Heating (Btu/hr)	
1. @ 47°F Rated	36,000
1. @ 47°F Min/Max Capacity	11,200~41,000
2. @ 17°F Rated	24,800
3. @ 5°F Rated: Capacity / COP	27,200 / 1.9
3. @ 5°F Max. Capacity	29,000
Standard Operating Range (°F/°C)	-13~75 (-25~24)
1. Rated Heating Conditions:	Indoor: 70°F DB/60°F WB
	Outdoor: 47°F DB/43°F WB
2. Rated Heating Conditions:	Indoor: 70°F DB/60°F WB
	Outdoor: 17°F DB/15°F WB
3. Heating Conditions*	Indoor: 70°F DB/60°F WB
	Outdoor: 5°F DB/5°F WB

*Compressor Operating at Max. Frequency

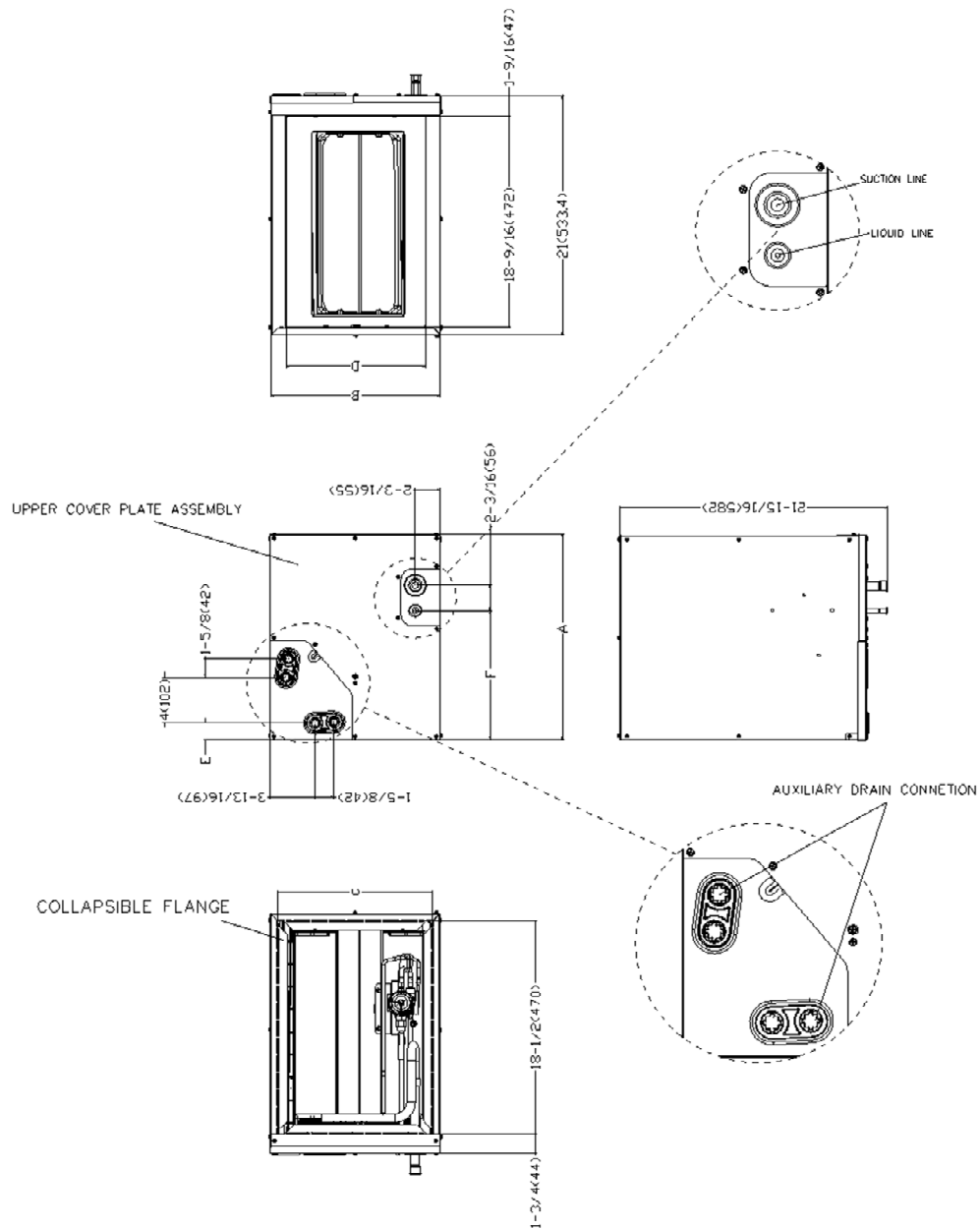
ELECTRICAL SPECIFICATIONS

Indoor Power Supply	24V, 60Hz, 1Ph
Indoor MCA 115V/(208/230V)	N/A
Indoor MOP	N/A
Outdoor Power Supply	208/230, 60Hz, 1Ph
Outdoor MCA	24.0
Outdoor MOP	30.0
Communication Wiring	AWG 20/2
Compressor RLA	17.5
Outdoor Fan Motor RLA	1.5
Outdoor Fan Motor W	120
Indoor Fan Motor RLA	N/A
Indoor Fan Motor W	N/A
System Power Input @ Cooling (W)	3,530 (630~3,600)
System Power Input @ Heating (W)	3,103 (550~3,370)
MCA: Min. circuit amps (A)	MOP: Max. overcurrent protection (A)
RLA: Rated load amps (A)	W: Fan motor rated output (W)

REFRIGERANT PIPING SPECIFICATIONS

Throttle type (Indoor)	EXV
Throttle type (Outdoor)	EXV
Liquid Size	3/8" (9.52mm)
Gas Size	3/4" (19mm)
Max. Piping Length (ft/m)	246 (75)
Max. Height Difference (ft/m)	98.4 (30)
Max. Pre-charged Length (ft/m)	25 (7.5)
Refrigerant Pre-charged Amount (oz/kg)	116 (3.3)
Additional Charge of Refrigerant ((oz/ft)/(g/m))	0.7 (65)
Connection Method	Flared

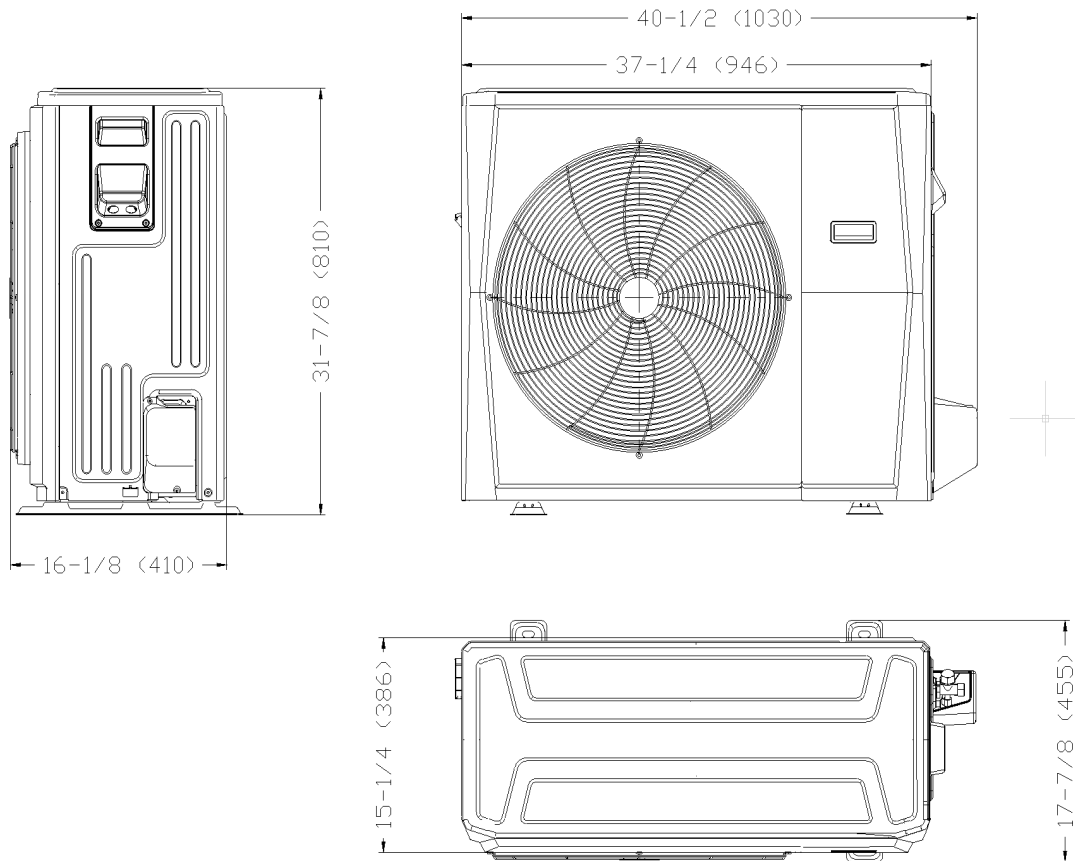
INDOOR UNIT SPECIFICATIONS



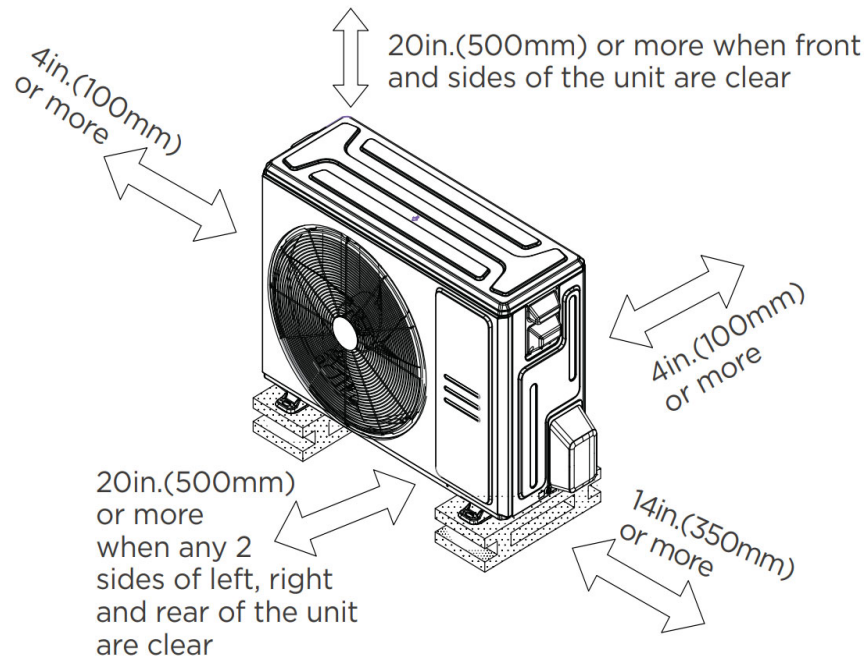
<div>Model</div> <div>Dimensions</div>		ACiQ-24-ACL-B	ACiQ-24-ACL-14-B	ACiQ-36-ACL-B	ACiQ-36-ACL-17-B	ACiQ-48-ACL-B	ACiQ-60-ACL-B
		inch (millimeter)	inch (millimeter)	inch (millimeter)	inch (millimeter)	inch (millimeter)	inch (millimeter)
A	Unit Height	18 (457)	18 (457)	24 (611)	23-9/16 (599)	27-3/4 (706)	28 (711)
B	Unit Width	17-1/2 (445)	14-1/2 (368)	21 (534)	17-1/2 (445)	21-5/8 (549)	24-1/2 (622)
C	Supply Air Opening Width	16-3/16 (411)	13-1/4 (336)	19-3/4 (502)	16-3/16 (411)	21-1/4 (514)	23-1/4 (591)
D	Return Air Opening Width	14-15/16 (380)	11-15/16 (303)	19-1/2 (498)	14-15/16 (380)	20 (509)	23-1/8 (587)
E	Condensate Drain Height	1-7/16 (38)	1-7/16 (38)	2-3/16 (55)	1-7/16 (38)	2-1/8 (50)	2-3/16 (55)
F	Liquid Line Height	11-3/8 (290)	11-3/8 (290)	17-1/2 (445)	16-3/8 (417)	17-5/8 (449)	21-7/16 (545)

OUTDOOR UNIT SPECIFICATIONS

Unit: inch (mm)



INSTALLATION INSTRUCTIONS FOR OUTDOOR UNIT



FEATURES

- Multi-position installation: horizontal (left or right), vertical (up or down)
- Aluminum Coil
- R454B refrigerant sensor
- Easy Maintenance
- Multiple control options available:
 - Two way communication wired controller with built-in WiFi:120N(X6W)
 - Third-Party 24V Thermostat