



# Submittal Data Sheet

Indoor Unit Model#: ACiQ-36-ACL-17-B

Outdoor Unit Model#: ACiQ-36-HPD

## 36K 17" EVAPORATOR A-COIL & 36K EXT. HEAT PUMP CONDENSER

Location:	Approval:
Engineer:	Date:
Submitted to:	Construction:
Submitted by:	Unit #:
Reference:	Drawing #:

System Product Code: 810175552873  
A-Coil Product Code: 810175552668  
Outdoor Unit Product Code: 810175550596



### INDOOR UNIT SPECIFICATIONS

Dimension (W×D×H)	inch	17-1/2 x 21 x 23-1/2
	mm	445 × 533 × 599
Package (W×D×H)	inch	20-1/2 x 26-1/8 x 26-3/8
	mm	520 × 665 × 670
Net/Gross Weight	lbs	59.5 / 68
	kg	27 / 30.9

### OUTDOOR UNIT SPECIFICATIONS

Compressor Type		TWIN-ROTARY
Compressor Model		EKPQ420D1UMUA
Refrigerant		R454B
Refrigerant Oil Charge (mL)		1460
Refrigerant Oil		VG75
Outdoor Air Flow (Max) (CFM)		3,002
Outdoor Noise Level (dBA)		64
Dimension (W×D×H)	inch	38-9/16 x 16-3/8 x 38-3/8
	mm	980 × 415 × 975
Package (W×D×H)	inch	45-1/16 x 19-11/16 x 42-1/2
	mm	1145 × 500 × 1080
Net/Gross Weight	lbs	204 / 235
	kg	92.6 / 106.7

### EFFICIENCY RATINGS

Cooling		Heating	
SEER2	15.8	HSPF2-4	9.4
EER2	10.7	COP	3.3

### COOLING PERFORMANCE

Cooling (Btu/hr)	
Rated Capacity	36,000
Min/Max Capacity	12,100~41,000
Moisture Removal (L/h)	4.91
Standard Operating Range (°F/°C)	-22~122 (-30~50)
Rated Cooling Conditions:	Indoor: 80°F DB/67°F WB
	Outdoor: 95°F DB/75°F WB

### HEATING PERFORMANCE

Heating (Btu/hr)	
1. @ 47°F Rated	38,000
1. @ 47°F Min/Max Capacity	11,500~46,000
2. @ 17°F Rated	29,200
3. @ 5°F Rated: Capacity / COP	36,000 / 1.9
3. @ 5°F Max. Capacity	36,000
Standard Operating Range (°F/°C)	-22~75 (-30~24)
1. Rated Heating Conditions:	Indoor: 70°F DB/60°F WB
	Outdoor: 47°F DB/43°F WB
2. Rated Heating Conditions:	Indoor: 70°F DB/60°F WB
	Outdoor: 17°F DB/15°F WB
3. Heating Conditions*	Indoor: 70°F DB/60°F WB
	Outdoor: 5°F DB/5°F WB

\*Compressor Operating at Max. Frequency

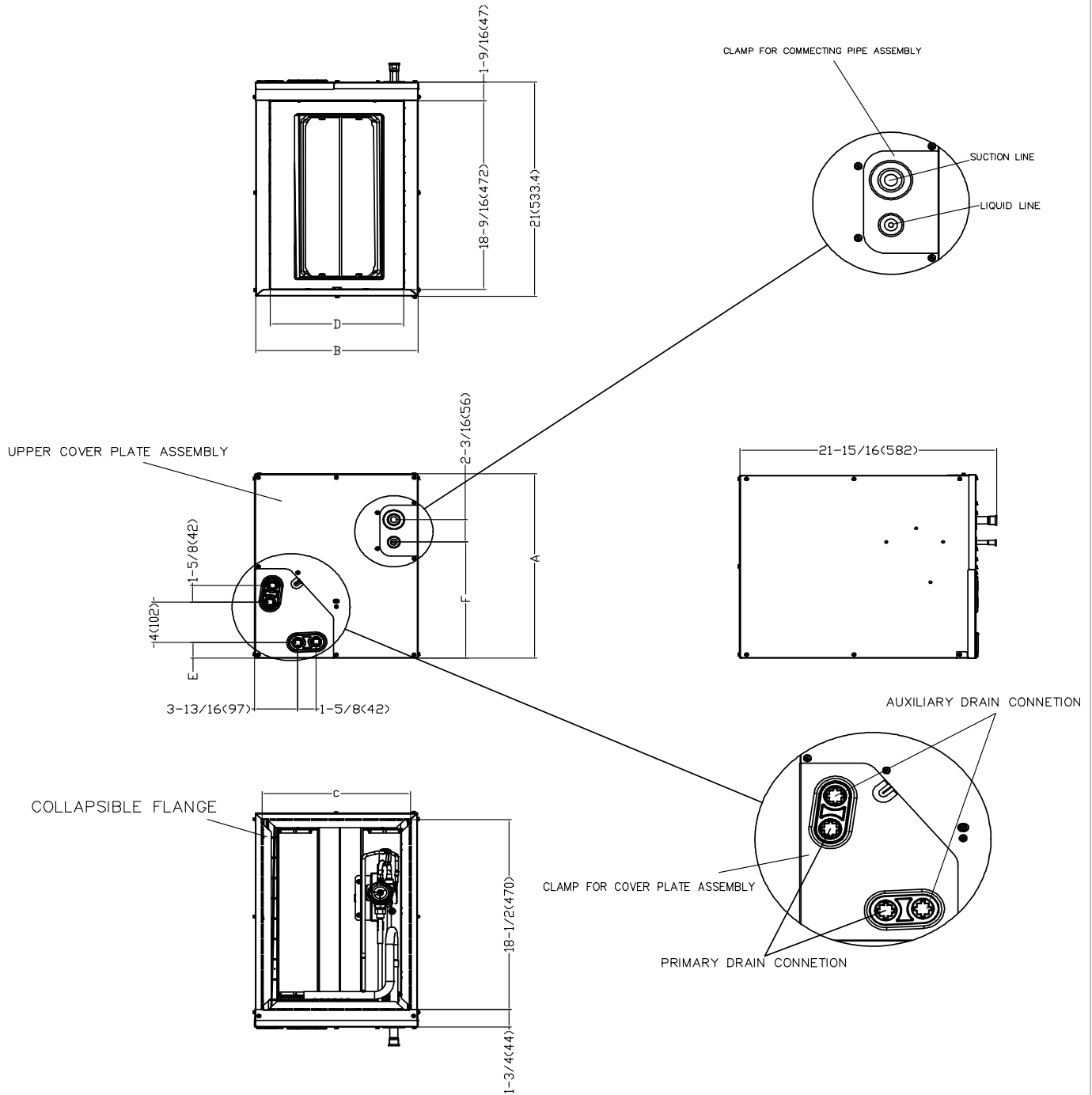
### ELECTRICAL SPECIFICATIONS

Indoor Power Supply	24V, 60Hz, 1Ph
Indoor MCA 115V/(208/230V)	N/A
Indoor MOP	N/A
Outdoor Power Supply	208/230, 60Hz, 1Ph
Outdoor MCA	29
Outdoor MOP	30
Communication Wiring	AWG 20-2
Compressor RLA	20.5
Outdoor Fan Motor RLA	2.4
Outdoor Fan Motor W	N/A
Indoor Fan Motor RLA	N/A
Indoor Fan Motor W	N/A
System Power Input @ Cooling (W)	3,364 (1,020 ~ 4,520)
System Power Input @ Heating (W)	3,375 (800 ~ 4,540)
MCA: Min. circuit amps (A)	MOP: Max. overcurrent protection (A)
RLA: Rated load amps (A)	W: Fan motor rated output (W)

### REFRIGERANT PIPING SPECIFICATIONS

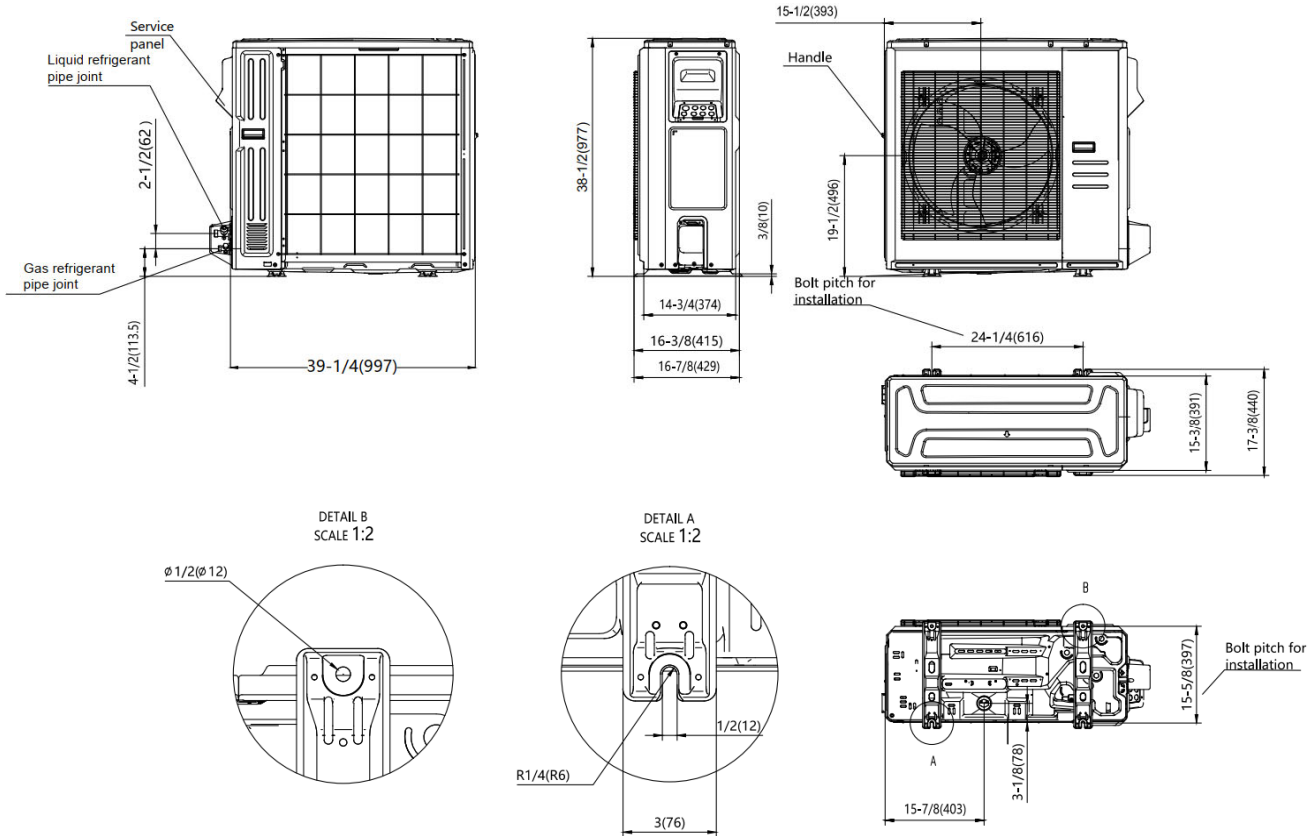
Throttle type (Indoor)	EXV
Throttle type (Outdoor)	EXV
Liquid Size	9.52 mm (3/8 in)
Gas Size	19 mm (3/4 in)
Max. Piping Length (ft/m)	246 (75)
Max. Height Difference (ft/m)	98 (30)
Max. Pre-charged Length (ft/m)	24.6 (7.5)
Refrigerant Pre-charged Amount (oz/kg)	126.99 (3.6)
Additional Charge of Refrigerant ((oz/ft)/(g/m))	0.7 (65)
Connection Method	Flared

# INDOOR UNIT DIMENSIONS

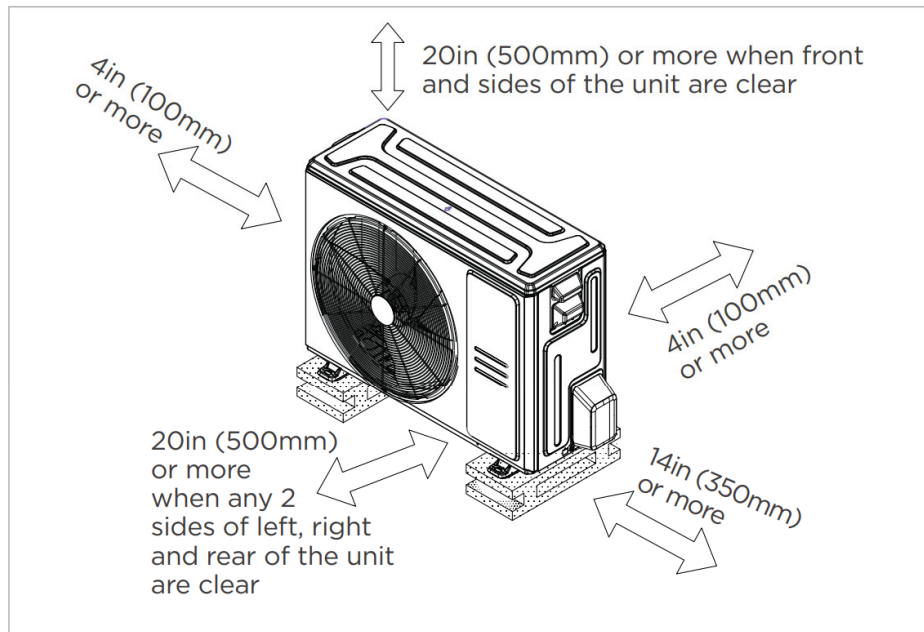


Model		ACiQ-24-ACL-B	ACiQ-24-ACL-14-B	ACiQ-36-ACL-B	ACiQ-36-ACL-17-B	ACiQ-48-ACL-B	ACiQ-60-ACL-B
		inch (millimeter)	inch (millimeter)	inch (millimeter)	inch (millimeter)	inch (millimeter)	inch (millimeter)
A	Unit Height	18 (457)	18 (457)	24 (611)	23-9/16 (599)	27-3/4 (706)	28 (711)
B	Unit Width	17-1/2 (445)	14-1/2 (368)	21 (534)	17-1/2 (445)	21-5/8 (549)	24-1/2 (622)
C	Supply Air Opening Width	16-3/16 (411)	13-1/4 (336)	19-3/4 (502)	16-3/16 (411)	21-1/4 (514)	23-1/4 (591)
D	Return Air Opening Width	14-15/16 (380)	11-15/16 (303)	19-1/2 (498)	14-15/16 (380)	20 (509)	23-1/8 (587)
E	Condensate Drain Height	1-7/16 (38)	1-7/16 (38)	2-3/16 (55)	1-7/16 (38)	2-1/8 (50)	2-3/16 (55)
F	Liquid Line Height	11-3/8 (290)	11-3/8 (290)	17-1/2 (445)	16-3/8 (417)	17-5/8 (449)	21-7/16 (545)

## OUTDOOR UNIT DIMENSIONS



## INSTALLATION INSTRUCTIONS FOR OUTDOOR UNIT



☒ Meets all spatial requirements shown in Installation Clearance Requirements above.

## FEATURES

- Multi-position installation: horizontal (left or right), vertical (up or down)
- Aluminum Coil
- R454B refrigerant sensor
- Easy Maintenance
- Multiple control options available:
  - Two way communication wired controller with built-in WiFi:120N(X6W)
  - Third-Party 24V Thermostat