



Submittal Data Sheet

Indoor Unit Model#: ACIQ-30-AHD
Outdoor Unit Model#: ACIQ-30-AC-B

30K DUCTED AIR HANDLER & 30K AC-COOLING ONLY CONDENSER

Location:	Approval:
Engineer:	Date:
Submitted to:	Construction:
Submitted by:	Unit #:
Reference:	Drawing #:

System Product Code: 810175554495
Indoor Unit Product Code: 810175550411
Outdoor Unit Product Code: 810175553580



EFFICIENCY RATINGS	
Cooling	
SEER2	17.0
EER2	11.0

COOLING PERFORMANCE	
Cooling (Btu/hr)	
Rated Capacity	30000
Min/Max Capacity	10800 ~ 32000
Moisture Removal (L/h)	3.5
Standard Operating Range (°F/°C)	-13 ~ 122 (-25 ~ 50)
Rated Cooling Conditions:	Indoor: 80°F DB/67°F WB Outdoor: 95°F DB/75°F WB

REFRIGERANT PIPING SPECIFICATIONS	
Throttle type (Indoor)	EXV
Throttle type (Outdoor)	EXV
Liquid Size	9.52mm (3/8in)
Gas Size	19mm (3/4in)
Max. Piping Length (ft/m)	164 (50)
Max. Height Difference (ft/m)	98 (30)
Max. Pre-charged Length (ft/m)	24.6 (7.5)
Refrigerant Pre-charged Amount (oz/kg)	81.13 (2.30)
Additional Charge of Refrigerant ((oz/ft)/(g/m))	0.7 (65)
Connection Method	Flared

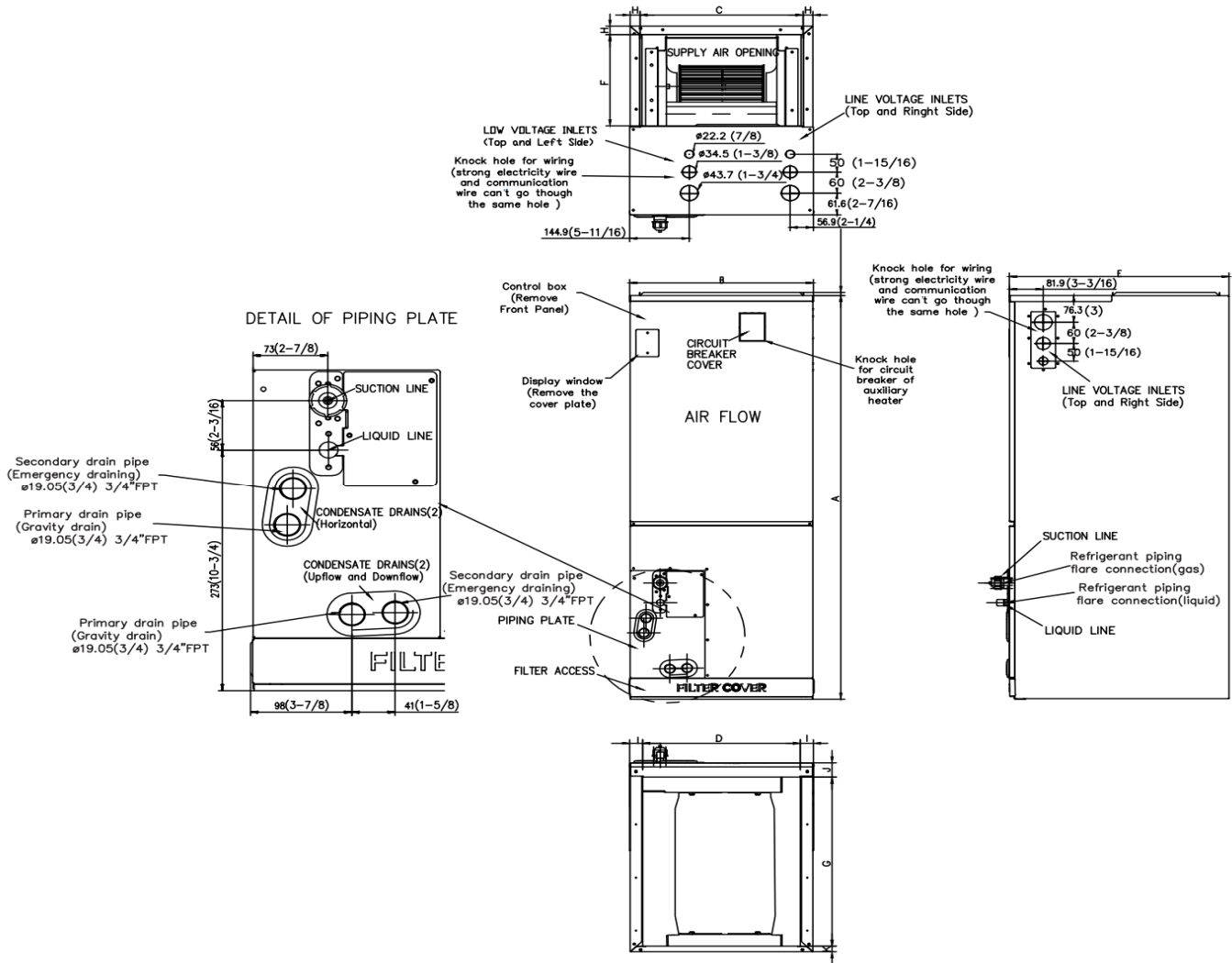
INDOOR UNIT SPECIFICATIONS		
Indoor Air Flow (Turbo/H/M/L/Si) (CFM)	988.85 / 894.67 / 806.38 / 712.21 / 712.21	
Indoor Noise Level (Turbo/H/M/L/Si) (dBA)	46 / 46 / 42 / 29 / 29	
Unit Dimensions (W×D×H)	inch	21.02 x 21.02 x 49.02
	mm	534.0 x 534.0 x 1245.0
Packaging Dimensions (W×D×H)	inch	26.57 x 24.41 x 52.56
	mm	675 x 620 x 1335
Net/Gross Weight	lbs	128.97 / 153.44
	kg	58.5 / 69.6

OUTDOOR UNIT SPECIFICATIONS		
Compressor Type	ROTARY	
Compressor Model	KTM240D46UKT2	
Refrigerant	R454B	
Refrigerant Oil Charge (mL)	620	
Refrigerant Oil	VG74	
Outdoor Air Flow (Max) (CFM)	1,825	
Outdoor Noise Level (dBA)	58	
Unit Dimensions (W×D×H)	inch	35.04 x 13.46 x 26.50
	mm	890 x 342 x 673
Packaging Dimensions (W×D×H)	inch	39.17 x 13.46 x 29.13
	mm	995 x 342 x 740
Net/Gross Weight	lbs	98.33 / 105.60
	kg	44.6 / 47.9

ELECTRICAL SPECIFICATIONS	
Indoor Power Supply	115/208/230V, 60Hz, 1Ph
Indoor MCA 115V / (208/230V)	8.0 / 6.0
Indoor MOP	15
Outdoor Power Supply	208/230V, 60Hz, 1Ph
Outdoor MCA	20
Outdoor MOP	20
Communication Wiring	AWG 20-2
Compressor RLA	15
Outdoor Fan Motor RLA	1
Indoor Fan Motor RLA	4.5
Indoor Fan Motor W	375
System Power Input @ Cooling (W)	2730 (785 ~ 2820)
MCA: Min. circuit amps (A)	MOP: Max. overcurrent protection (A)
RLA: Rated load amps (A)	W: Fan motor rated output (W)

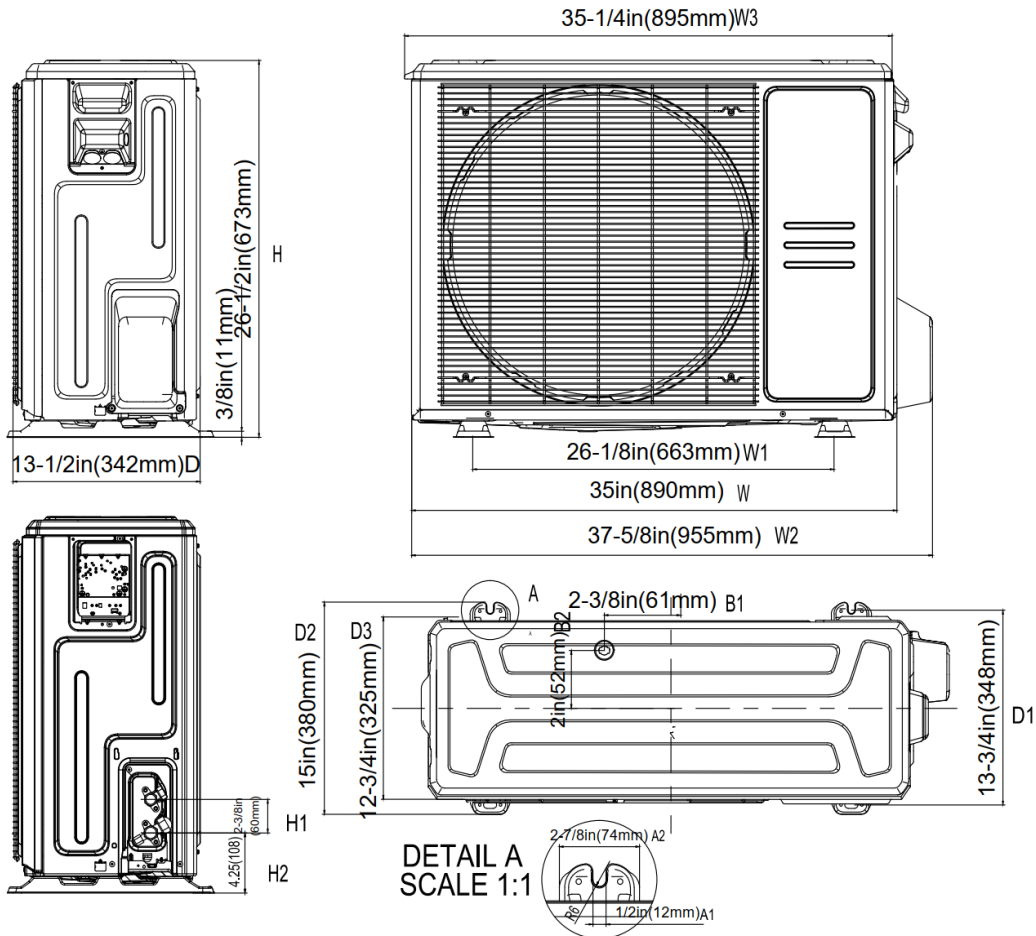
FEATURES
<ul style="list-style-type: none"> Multi-position installation: horizontal (left or right), vertical (up or down) Aluminum Coil Constantly Air Flow system up to 0.80 In.W.G 1 inch R4.2 fiberglass free insulation reduces condensation & boosts efficiency (optional) Optional Auxiliary heat kit up to 25kW Easy Maintenance Multiple control options available: <ul style="list-style-type: none"> Two way communication wired controller: 120N (X6) Two way communication wired controller with built-in WiFi: 120N (X6W) Wireless remote controller Third-Party 24V Thermostat Adaptive Control System Chassis heater and crankcase heater equipped as standard

INDOOR UNIT DIMENSIONS

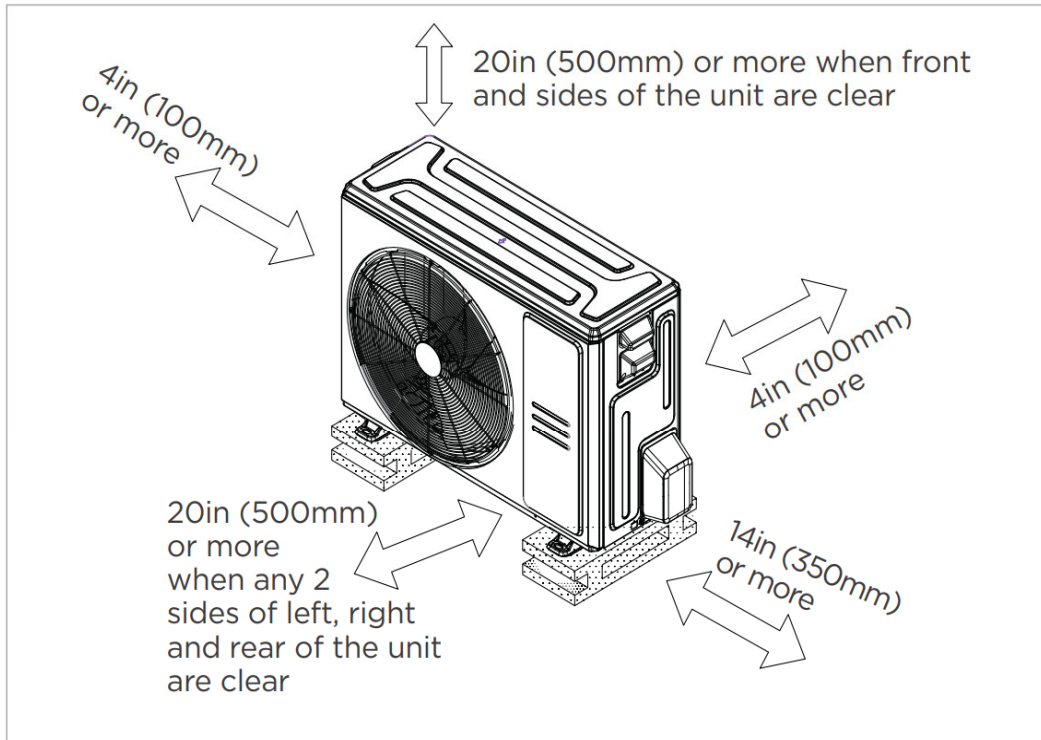


Dimensions	Model	18k/24k		30k/36k		48k/60k	
		inch	mm	inch	mm	inch	mm
A	Model Height	45	1143	49	1245	53	1346
B	Model Width	17-1/2	445	21	534	24-1/2	622
C	Supply Air Opening Width	15-5/8	397	19-1/8	486	22-5/8	575
D	Return Air Opening Width	15-1/8	384	18-5/8	473	22-1/8	562
E	Model Depth	21	534	21	534	21	534
F	Supply Air Opening Depth	10-1/4	260	10-1/4	260	10-1/4	260
G	Return Air Opening Depth	18-3/4	476	18-3/4	476	18-3/4	476
H	Supply Air Opening Clearance	15/16	24	15/16	24	15/16	24
I	Return Air Opening Side Clearance	1-1/4	32	1-1/4	32	1-1/8	28
J	Return Air Opening Front Clearance	1-1/2	38	1-5/8	41	1-5/8	41
K	Return Air Opening Back Clearance	5/8	16	5/8	16	3/4	19

OUTDOOR UNIT DIMENSIONS



INSTALLATION INSTRUCTIONS FOR OUTDOOR UNIT



Meets all spatial requirements shown in Installation Clearance Requirements above.

FAN PERFORMANCE FOR INDOOR UNIT

