



# Submittal Data Sheet

Indoor Unit Model#: ACiQ-30-PAH

Outdoor Unit Model#: ACiQ-30-HPD

Air Handler Heat Pump System

Location:	Approval:
Engineer:	Date:
Submitted to:	Construction:
Submitted by:	Unit #:
Reference:	Drawing #:

System Product Code: 810175550787  
Indoor Unit Product Code: 810175550794  
Outdoor Unit Product Code: 810175550572



## INDOOR UNIT SPECIFICATIONS

ESP (inWG)		0~1.2
Indoor Air Flow (Turbo/H/M/L/Si) (CFM)		988.8 / 894.7 / 806.4 / 712.2 / NA
Indoor Noise Level (Turbo/H/M/L/Si) (dBA)		49 / 47 / 45.5 / 31.5 / NA
Dimension (WxDxH)	inch	17.52 x 21.50 x 53.98
	mm	445.0 x 546.0 x 1371
Package (WxDxH)	inch	57.09 x 20.47 x 31.10
	mm	1450 x 520 x 790
Net/Gross Weight	lbs	149.25 / 182.10
	kg	67.7 / 82.6

## OUTDOOR UNIT SPECIFICATIONS

Compressor Type		ROTARY
Compressor Model		MTH356UKRC8FQL
Refrigerant		R454B
Refrigerant Oil Charge (mL)		1300
Refrigerant Oil		HAF68D1A
Outdoor Air Flow (Max) (CFM)		3001.9
Outdoor Noise Level (dBA)		62
Dimension (WxDxH)	inch	37.24 x 16.14 x 31.89
	mm	946.0 x 410.0 x 810.0
Package (WxDxH)	inch	42.91 x 19.68 x 34.84
	mm	1090 x 500 x 885
Net/Gross Weight	lbs	166.67 / 176.37
	kg	75.6 / 80.0

## EFFICIENCY RATINGS

Cooling		Heating	
SEER2	17.2	HSPF2-4	10.8
EER2	12.0	COP	3.54

## COOLING PERFORMANCE

Cooling (Btu/hr)	
Rated Capacity	30000
Min/Max Capacity	11200~40000
Moisture Removal (L/h)	3.15
Standard Operating Range (°F/°C)	-22~122 (-30~50)
Rated Cooling Conditions:	Indoor: 80°F DB/67°F WB Outdoor: 95°F DB/75°F WB

## HEATING PERFORMANCE

Heating (Btu/hr)	
1. @ 47°F Rated	33000
1. @ 47°F Min/Max Capacity	9700~35800
2. @ 17°F Rated	24000
3. @ 5°F Rated: Capacity / COP	33200 / 1.97
3. @ 5°F Max: Capacity	33200
Standard Operating Range (°F/°C)	-22~75 (-30~24)
1. Rated Heating Conditions:	Indoor: 70°F DB/60°F WB Outdoor: 47°F DB/43°F WB
2. Rated Heating Conditions:	Indoor: 70°F DB/60°F WB Outdoor: 17°F DB/15°F WB
3. Heating Conditions, Compressor Operating at Max. Frequency	Indoor: 70°F DB/60°F WB Outdoor: 5°F DB/5°F WB

## ELECTRICAL SPECIFICATIONS

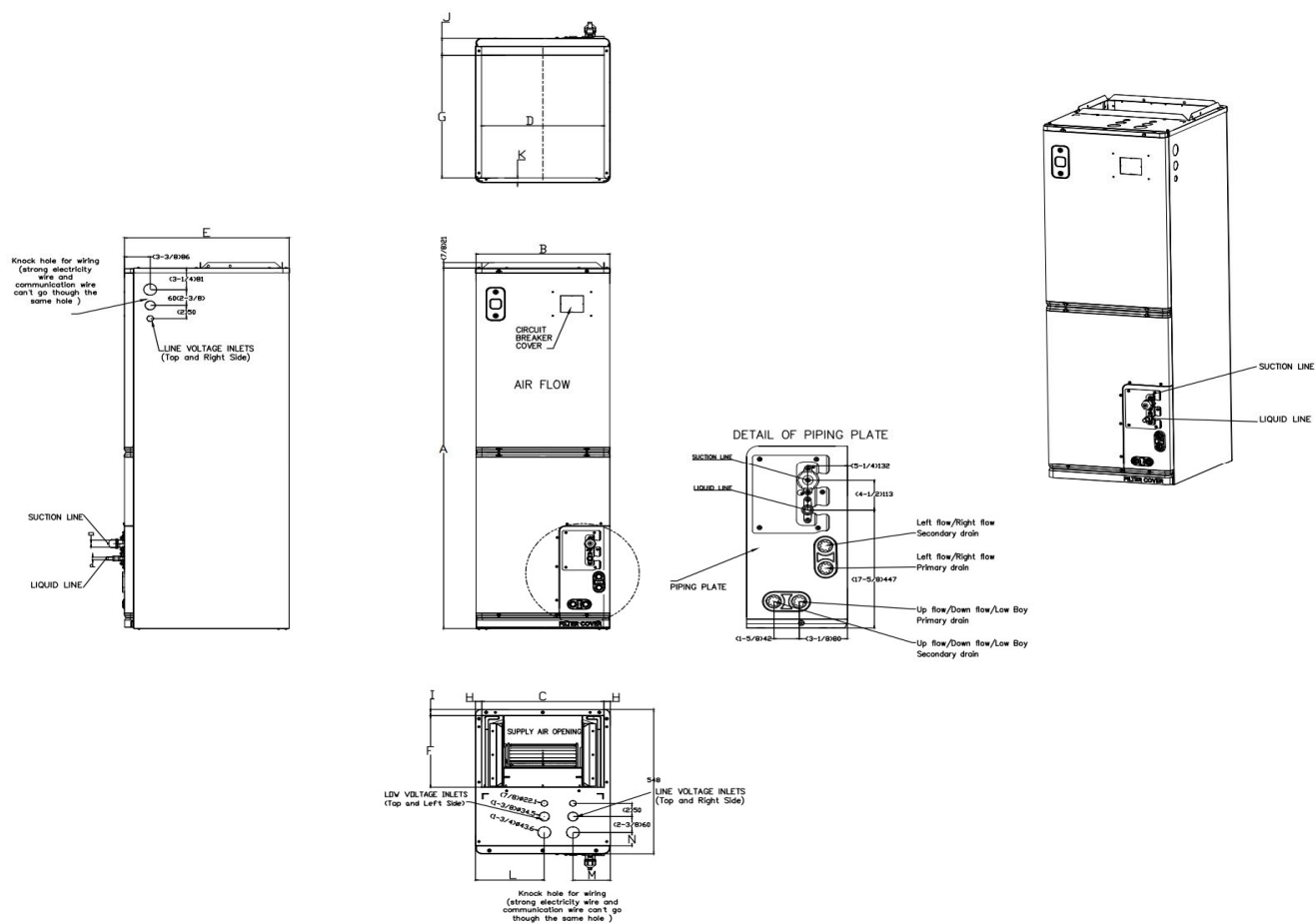
Indoor Power Supply	115/208/230V, 60Hz, 1Ph
Indoor MCA 115V / (208/230V)	8.0 / 6.0
Indoor MOP	15
Outdoor Power Supply	208/230V, 60Hz, 1Ph
Outdoor MCA	29.5
Outdoor MOP	30
Communication Wiring	AWG 20-2
Compressor RLA	18
Outdoor Fan Motor RLA	1
Outdoor Fan Motor W	120
Indoor Fan Motor RLA	4.5
Indoor Fan Motor W	N/A
System Power Input @ Cooling (W)	2480 (1020 ~ 3880)
System Power Input @ Heating (W)	2730 (580 ~ 3030)
MCA: Min. circuit amps (A)	MOP: Max. overcurrent protection (A)
RLA: Rated load amps (A)	W: Fan motor rated output (W)

## REFRIGERANT PIPING SPECIFICATIONS

Throttle type (Indoor)	EXV
Throttle type (Outdoor)	EXV
Liquid Size	9.52mm (3/8in)
Gas Size	19mm (3/4in)
Max. Piping Length (ft/m)	164 (50)
Max. Height Difference (ft/m)	82 (25)
Max. Pre-charged Length (ft/m)	24.6 (7.5)
Refrigerant Pre-charged Amount (oz/kg)*	105.82 (3)
Additional Charge of Refrigerant ((oz/ft)/(g/m))	0.7 (65)
Connection Method	Flared

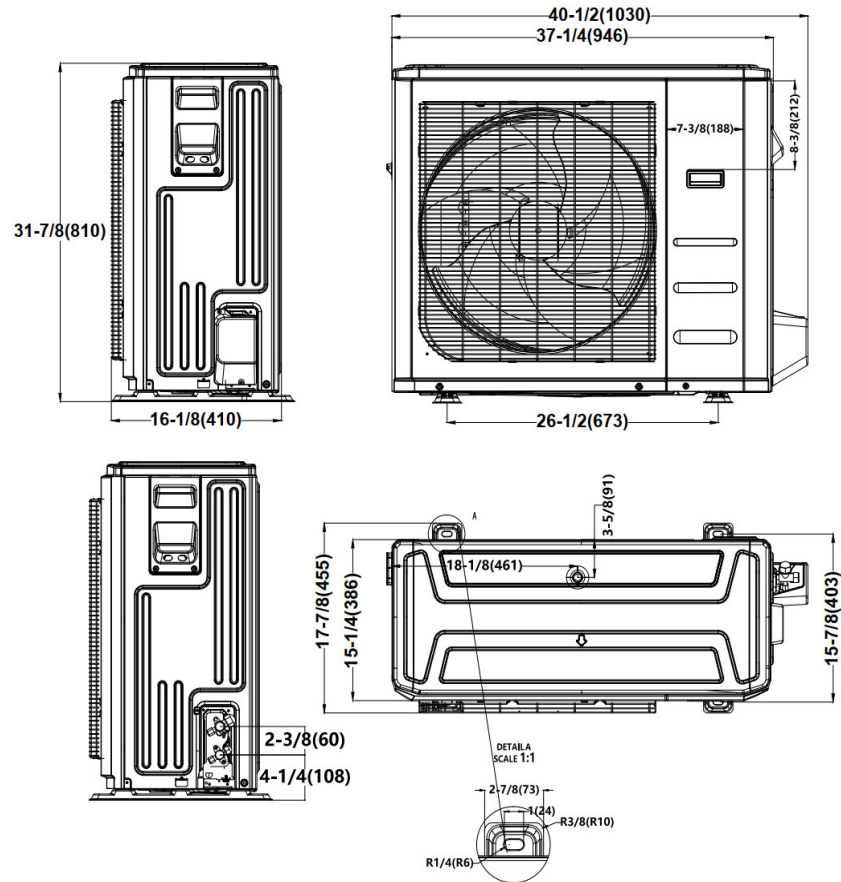
\* When ACiQ-30-HPD is paired with ACiQ-30-PAH, an additional 0.6kg/21.16oz of refrigerant is required.

# Indoor Unit Dimensions

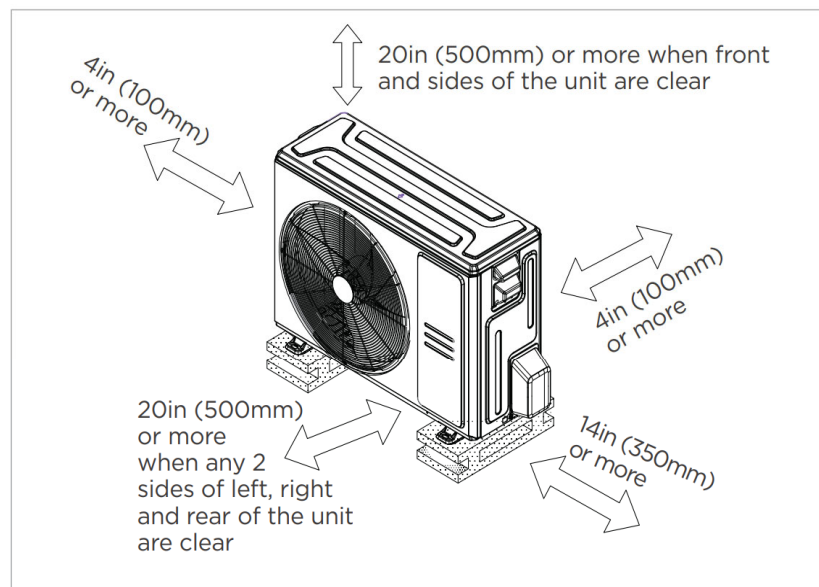


Model(Btu/h)		18K/24K		30K/36K		48K/54K	
Dimensions		inch	mm	inch	mm	inch	mm
A	Model Height	49-3/4	1263	54	1371	56	1421
B	Model Width	14-1/2	368	17-1/2	445	21-1/2	546
C	Supply Air Opening Width	12-7/8	328	16	405	19-7/8	506
D	Return Air Opening Width	13	331	16	407	20	509
E	Model Depth	21-1/2	546	21-1/2	546	21-1/2	546
F	Supply Air Opening Depth	10-5/8	271	10-5/8	271	10-5/8	271
G	Return Air Opening Depth	18-1/4	465	18-1/4	465	18-1/4	465
H	Supply Air Opening Clearance	7/8	22	7/8	22	7/8	22
I	Supply Air Opening Clearance	1	24	1	24	1	24
J	Return Air Opening Front Clearance	2-1/2	65	2-1/2	65	2-1/2	65
K	Return Air Opening Back Clearance	3/4	18	3/4	18	3/4	18
L	Top cover knock hole	/	/	9	229	10-7/8	275
M	Top cover knock hole	4-1/2	113	4-7/8	124	5-1/8	131
N	Top cover knock hole	2	51	2	51	1-5/8	41
O	Refrigerant piping flareconnection(gas)	3/4	19	3/4	19	3/4	19
P	Refrigerant piping flareconnection(liquid)	3/8	9	3/8	9	3/8	9

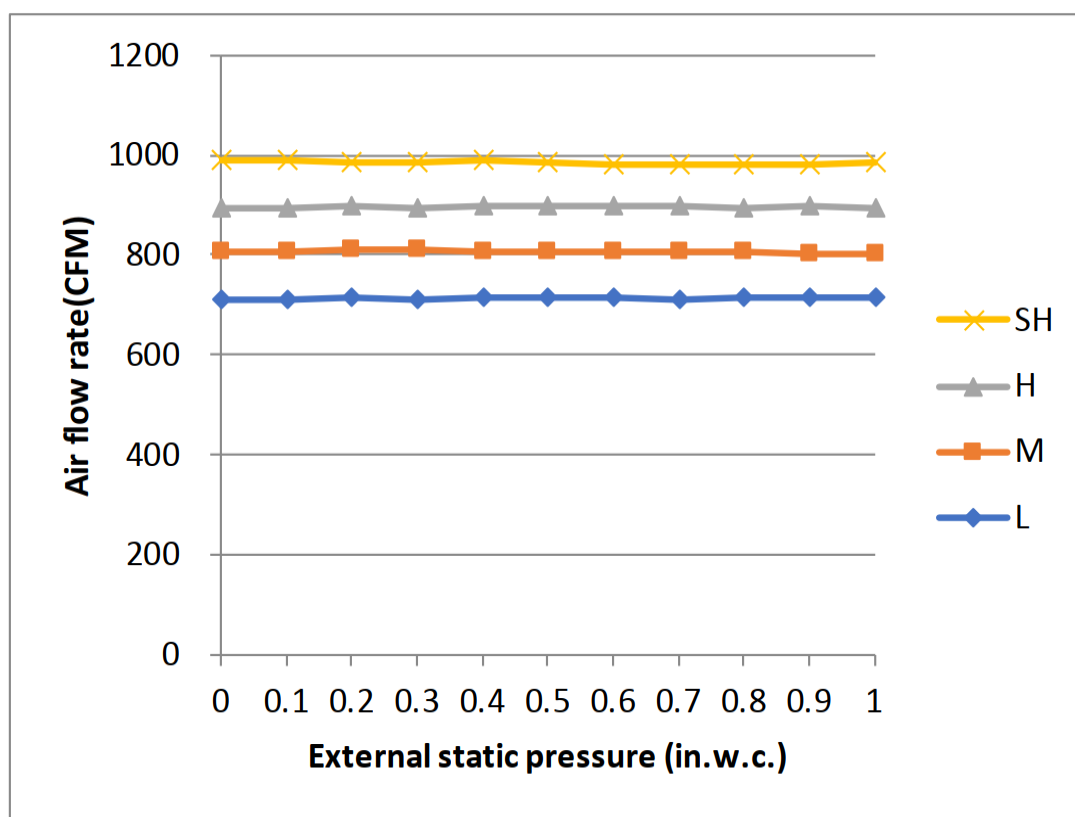
## Outdoor Unit Dimensions



## Installation Instruction For Outdoor Unit



☑ Meets all spatial requirements shown in Installation Clearance Requirements above.



#### Features

- Multi-position installation: horizontal (left or right), vertical (up or down)
- 115/230V voltage compatible for IDU
- Aluminum Coil
- Constantly Air Flow system up to 1.0 In.W.G
- Optional Auxiliary heat kit up to 25kW
- Easy Maintenance
- Multiple control options available:
  - Two way communication wired controller: 120N (X6)
  - Two way communication wired controller with built-in WiFi: 120N (X6W)
  - Wireless remote controller
  - Third-Party 24V Thermostat
- Adaptive Control System
- High efficiency up to 19 SEER2, 12.5 EER2, 10.8 HSPF2
- 100% heat output at -13F\*
- Chassis heater and crankcase heater equipped as standard

\* For ACiQ-36-PAH pairing with ACiQ-36-HPD, rated cooling capacity/heating capacity at -13F=100%