



Submittal Data Sheet

Indoor Unit Model#: ACiQ-36-PAH

Outdoor Unit Model#: ACiQ-36-HPD

Air Handler Heat Pump System

Location:	Approval:
Engineer:	Date:
Submitted to:	Construction:
Submitted by:	Unit #:
Reference:	Drawing #:

System Product Code: 810175550800
Indoor Unit Product Code: 810175550817
Outdoor Unit Product Code: 810175550596



INDOOR UNIT SPECIFICATIONS

ESP (inWG)		0~1.2
Indoor Air Flow (Turbo/H/M/L/Si) (CFM)		1236.1 / 1147.8 / 1059.5 / 971.2 / NA
Indoor Noise Level (Turbo/H/M/L/Si) (dBA)		48 / 46.5 / 45.0 / 33 / NA
Dimension (WxDxH)	inch	17.52 x 21.50 x 53.98
	mm	445.0 x 546.0 x 1371
Package (WxDxH)	inch	57.09 x 20.47 x 31.10
	mm	1450 x 520 x 790
Net/Gross Weight	lbs	149.25 / 182.10
	kg	67.7 / 82.6

OUTDOOR UNIT SPECIFICATIONS

Compressor Type		TWIN-ROTARY
Compressor Model		EKPQ420D1UMUA
Refrigerant		R454B
Refrigerant Oil Charge (mL)		1460
Refrigerant Oil		VG75
Outdoor Air Flow (Max) (CFM)		3001.9
Outdoor Noise Level (dBA)		63
Dimension (WxDxH)	inch	38.58 x 16.34 x 38.39
	mm	980.0 x 415.0 x 975.0
Package (WxDxH)	inch	45.08 x 19.68 x 42.52
	mm	1145 x 500 x 1080
Net/Gross Weight	lbs	204.15 / 235.23
	kg	92.6 / 106.7

EFFICIENCY RATINGS

Cooling		Heating	
SEER2	18.0	HSPF2-4	10.0
EER2	12.0	COP	3.50

COOLING PERFORMANCE

Cooling (Btu/hr)	
Rated Capacity	36000
Min/Max Capacity	12100~43000
Moisture Removal (L/h)	3.41
Standard Operating Range (°F/°C)	-22~122 (-30~50)
Rated Cooling Conditions:	
Indoor: 80°F DB/67°F WB	
Outdoor: 95°F DB/75°F WB	

HEATING PERFORMANCE

Heating (Btu/hr)	
1. @ 47°F Rated	37000
1. @ 47°F Min/Max Capacity	11400~47000
2. @ 17°F Rated	31000
3. @ 5°F Rated: Capacity / COP	37400 / 1.9
3. @ 5°F Max: Capacity	37400
Standard Operating Range (°F/°C)	-22~75 (-30~24)
1. Rated Heating Conditions:	
Indoor: 70°F DB/60°F WB	
Outdoor: 47°F DB/43°F WB	
2. Rated Heating Conditions:	
Indoor: 70°F DB/60°F WB	
Outdoor: 17°F DB/15°F WB	
3. Heating Conditions, Compressor	
Indoor: 70°F DB/60°F WB	
Operating at Max. Frequency	
Outdoor: 5°F DB/5°F WB	

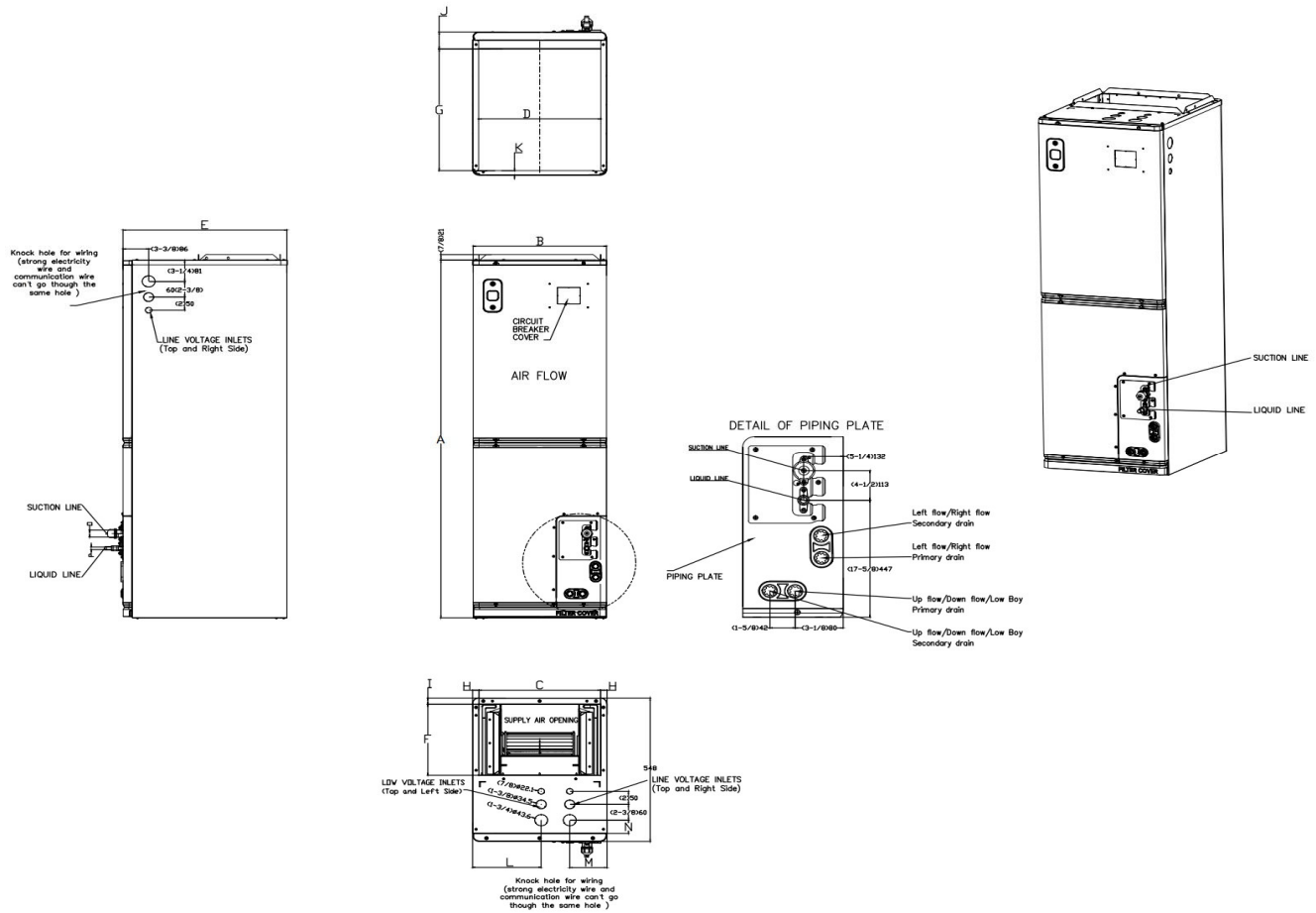
ELECTRICAL SPECIFICATIONS

Indoor Power Supply	115/208/230V,60Hz,1Ph
Indoor MCA 115V / (208/230V)	8.0 / 6.0
Indoor MOP	15
Outdoor Power Supply	208/230V,60Hz,1Ph
Outdoor MCA	32
Outdoor MOP	35
Communication Wiring	AWG 20-2
Compressor RLA	23
Outdoor Fan Motor RLA	2
Outdoor Fan Motor W	250
Indoor Fan Motor RLA	4.5
Indoor Fan Motor W	N/A
System Power Input @ Cooling (W)	3000 (910 ~ 4370)
System Power Input @ Heating (W)	3098 (755 ~4210)
MCA: Min. circuit amps (A)	MOP: Max. overcurrent protection (A)
RLA: Rated load amps (A)	W: Fan motor rated output (W)

REFRIGERANT PIPING SPECIFICATIONS

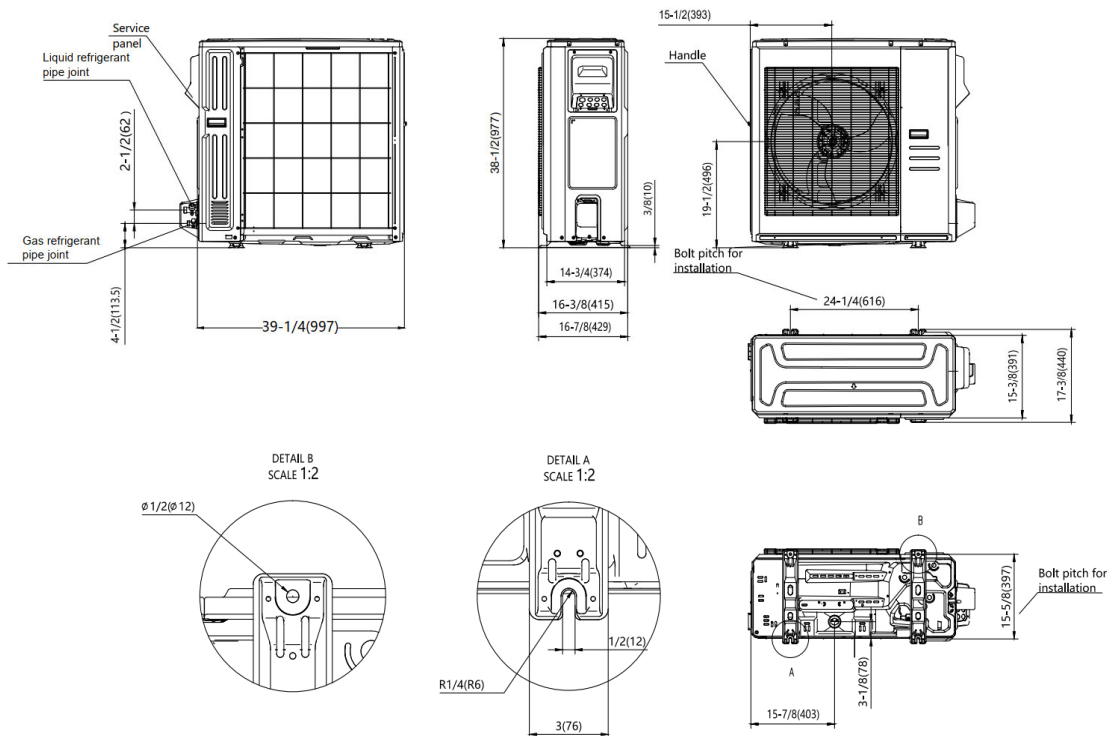
Throttle type (Indoor)	EXV
Throttle type (Outdoor)	EXV
Liquid Size	9.52mm (3/8in)
Gas Size	19mm (3/4in)
Max. Piping Length (ft/m)	246 (75)
Max. Height Difference (ft/m)	98.4 (30)
Max. Pre-charged Length (ft/m)	24.6 (7.5)
Refrigerant Pre-charged Amount (oz/kg)	126.99 (3.6)
Additional Charge of Refrigerant ((oz/ft)/(g/m))	0.7 (65)
Connection Method	Flared

Indoor Unit Dimensions

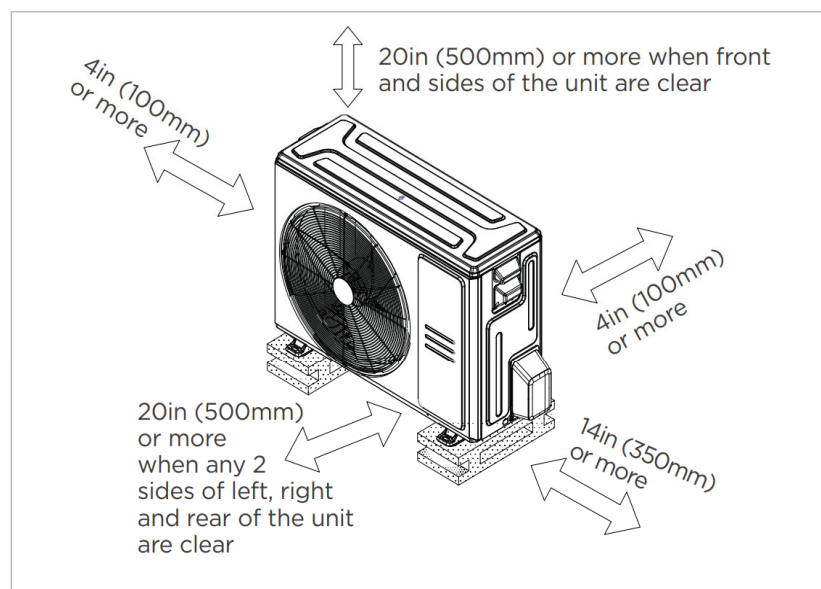


Model(Btu/h)		18K/24K		30K/36K		48K/54K	
Dimensions		inch	mm	inch	mm	inch	mm
A	Model Height	49-3/4	1263	54	1371	56	1421
B	Model Width	14-1/2	368	17-1/2	445	21-1/2	546
C	Supply Air Opening Width	12-7/8	328	16	405	19-7/8	506
D	Return Air Opening Width	13	331	16	407	20	509
E	Model Depth	21-1/2	546	21-1/2	546	21-1/2	546
F	Supply Air Opening Depth	10-5/8	271	10-5/8	271	10-5/8	271
G	Return Air Opening Depth	18-1/4	465	18-1/4	465	18-1/4	465
H	Supply Air Opening Clearance	7/8	22	7/8	22	7/8	22
I	Supply Air Opening Clearance	1	24	1	24	1	24
J	Return Air Opening Front Clearance	2-1/2	65	2-1/2	65	2-1/2	65
K	Return Air Opening Back Clearance	3/4	18	3/4	18	3/4	18
L	Top cover knock hole	/	/	9	229	10-7/8	275
M	Top cover knock hole	4-1/2	113	4-7/8	124	5-1/8	131
N	Top cover knock hole	2	51	2	51	1-5/8	41
O	Refrigerant piping flareconnection(gas)	3/4	19	3/4	19	3/4	19
P	Refrigerant piping flareconnection(liquid)	3/8	9	3/8	9	3/8	9

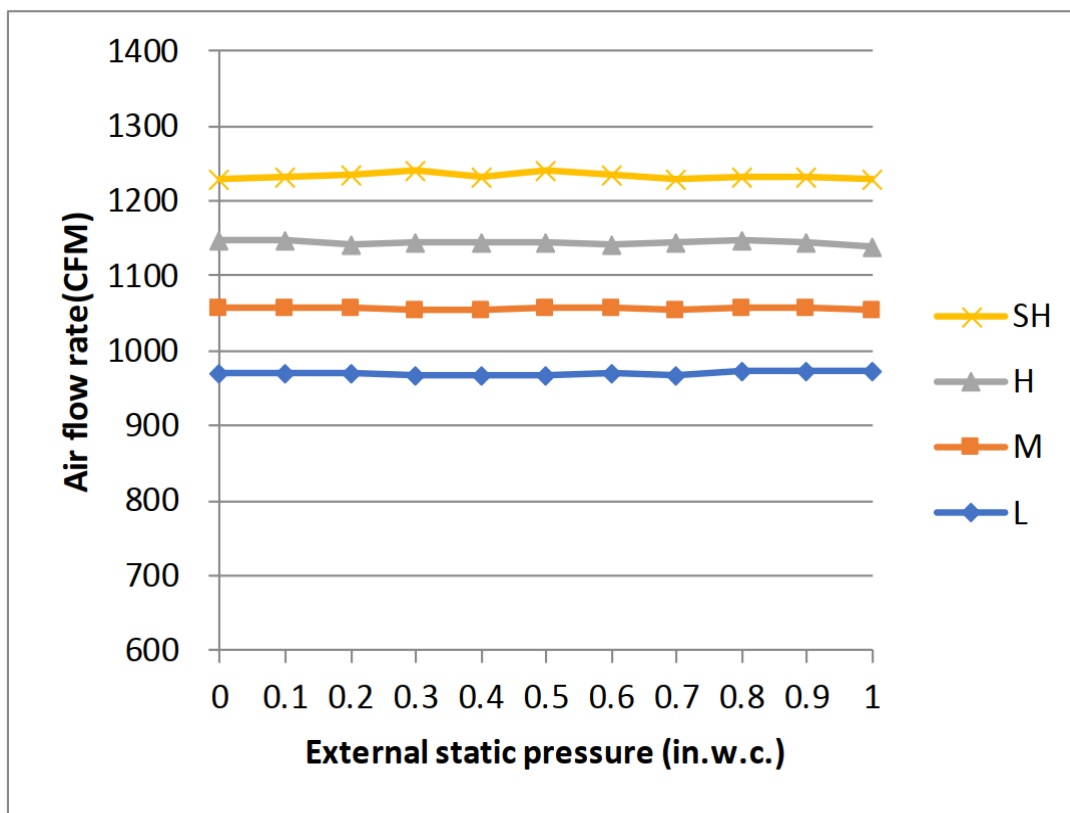
Outdoor Unit Dimensions



Installation Instruction For Outdoor Unit



☒ Meets all spatial requirements shown in Installation Clearance Requirements above.



Features

- Multi-position installation: horizontal (left or right), vertical (up or down)
- 115/230V voltage compatible for IDU
- Aluminum Coil
- Constantly Air Flow system up to 1.0 In.W.G
- Optional Auxiliary heat kit up to 25kW
- Easy Maintenance
- Multiple control options available:
 - Two way communication wired controller: 120N (X6)
 - Two way communication wired controller with built-in WiFi: 120N (X6W)
 - Wireless remote controller
 - Third-Party 24V Thermostat
- Adaptive Control System
- High efficiency up to 19 SEER2, 12.5 EER2, 10.8 HSPF2
- 100% heat output at -13F*
- Chassis heater and crankcase heater equipped as standard

* For ACIQ-36-PAH pairing with ACIQ-36-HPD, rated cooling capacity/heating capacity at -13F=100%