



Submittal Data Sheet

Indoor Unit Model#: ACiQ-60-PAH

Outdoor Unit Model#: ACiQ-60-HPD

Air Handler Heat Pump System

Location:	Approval:
Engineer:	Date:
Submitted to:	Construction:
Submitted by:	Unit #:
Reference:	Drawing #:

System Product Code: 81017550848
Indoor Unit Product Code: 81017550855
Outdoor Unit Product Code: 81017550664



INDOOR UNIT SPECIFICATIONS

ESP (inWG)		0~1.2
Indoor Air Flow (Turbo/H/M/L/Si) (CFM)		1801.1 / 1648.1 / 1500.9 / 1236.1 / NA
Indoor Noise Level (Turbo/H/M/L/Si) (dBA)		60.0 / 57.0 / 54.5 / 37.0 / NA
Dimension (W×D×H)	inch	21.50 x 21.50 x 55.94
	mm	546.0 x 546.0 x 1421
Package (W×D×H)	inch	59.84 x 25.00 x 31.10
	mm	1520 x 635 x 790
Net/Gross Weight	lbs	188.05 / 238.32
	kg	85.3 / 108.1

OUTDOOR UNIT SPECIFICATIONS

Compressor Type		TWIN-ROTARY
Compressor Model		ETPQ480D66UMU1
Refrigerant		R454B
Refrigerant Oil Charge (mL)		1300
Refrigerant Oil		VG75
Outdoor Air Flow (Max) (CFM)		2648.7
Outdoor Noise Level (dBA)		64.5
Dimension (W×D×H)	inch	37.48 x 16.34 x 52.48
	mm	952.0 x 415.0 x 1333.0
Package (W×D×H)	inch	43.11 x 19.49 x 58.27
	mm	1095 x 495 x 1480
Net/Gross Weight	lbs	242.95 / 275.13
	kg	110.2 / 124.8

EFFICIENCY RATINGS

Cooling		Heating	
SEER2	17.5	HSPF2-4	9.5
EER2	12.0	COP	3.35

COOLING PERFORMANCE

Cooling (Btu/hr)	
Rated Capacity	54000
Min/Max Capacity	11400~60000
Moisture Removal (L/h)	6.02
Standard Operating Range (°F/°C)	-22~122 (-30~50)
Rated Cooling Conditions:	Indoor: 80°F DB/67°F WB
	Outdoor: 95°F DB/75°F WB

HEATING PERFORMANCE

Heating (Btu/hr)	
1. @ 47°F Rated	55000
1. @ 47°F Min/Max Capacity	8600~60000
2. @ 17°F Rated	35000
3. @ 5°F Rated: Capacity / COP	54000 / 1.9
3. @ 5°F Max: Capacity	54000
Standard Operating Range (°F/°C)	-22~75 (-30~24)
1. Rated Heating Conditions:	Indoor: 70°F DB/60°F WB
	Outdoor: 47°F DB/43°F WB
2. Rated Heating Conditions:	Indoor: 70°F DB/60°F WB
	Outdoor: 17°F DB/15°F WB
3. Heating Conditions, Compressor Operating at Max. Frequency	Indoor: 70°F DB/60°F WB
	Outdoor: 5°F DB/5°F WB

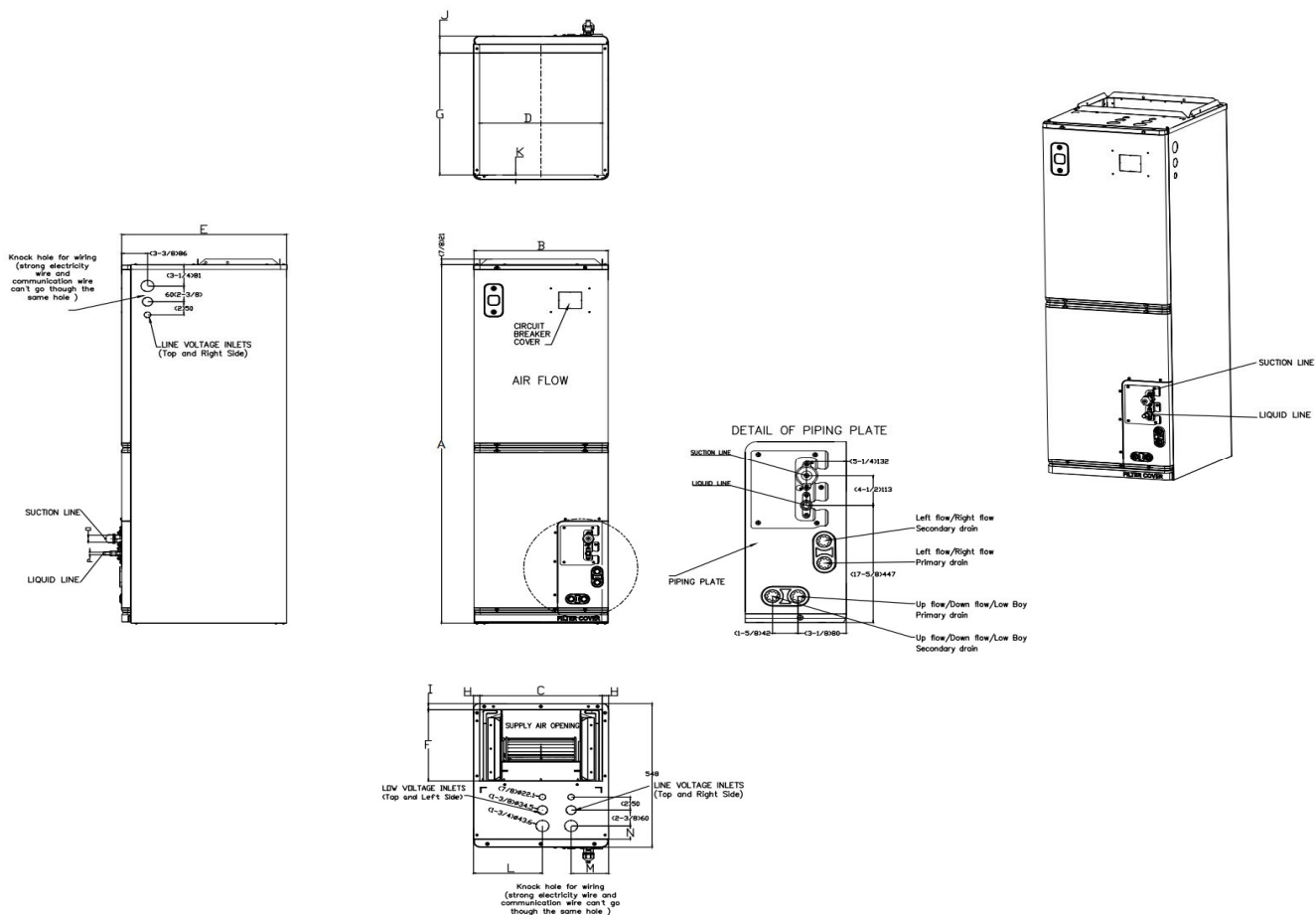
ELECTRICAL SPECIFICATIONS

Indoor Power Supply	115/208/230V,60Hz,1Ph
Indoor MCA 115V/(208/230V)	14.5 / 10
Indoor MOP	15
Outdoor Power Supply	208/230V,60Hz,1Ph
Outdoor MCA	40
Outdoor MOP	40
Communication Wiring	AWG 20-2
Compressor RLA	31
Outdoor Fan Motor RLA	1.2
Outdoor Fan Motor W	85
Indoor Fan Motor RLA	8
Indoor Fan Motor W	N/A
System Power Input @ Cooling (W)	4851 (1540 ~ 6720)
System Power Input @ Heating (W)	5015 (775 ~5720)
MCA: Min. circuit amps (A)	MOP: Max. overcurrent protection (A)
RLA: Rated load amps (A)	W: Fan motor rated output (W)

REFRIGERANT PIPING SPECIFICATIONS

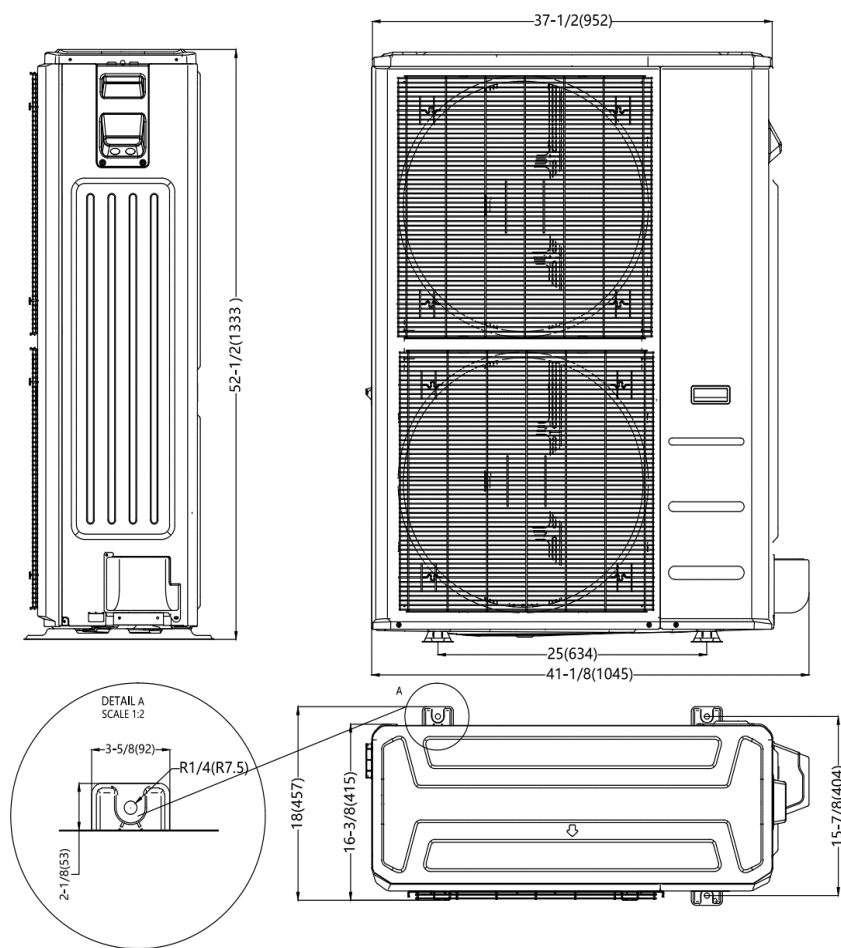
Throttle type (Indoor)	EXV
Throttle type (Outdoor)	EXV
Liquid Size	9.52mm (3/8in)
Gas Size	19mm (3/4in)
Max. Piping Length (ft/m)	246 (75)
Max. Height Difference (ft/m)	98.4 (30)
Max. Pre-charged Length (ft/m)	24.6 (7.5)
Refrigerant Pre-charged Amount (oz/kg)	183.42 (5.2)
Additional Charge of Refrigerant ((oz/ft)/(g/m))	0.7 (65)
Connection Method	Flared

Indoor Unit Dimensions

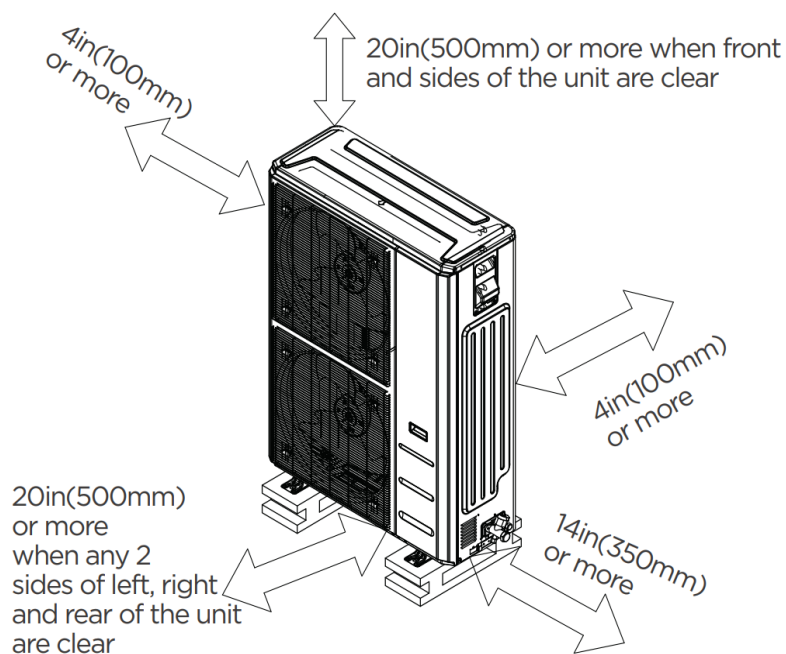


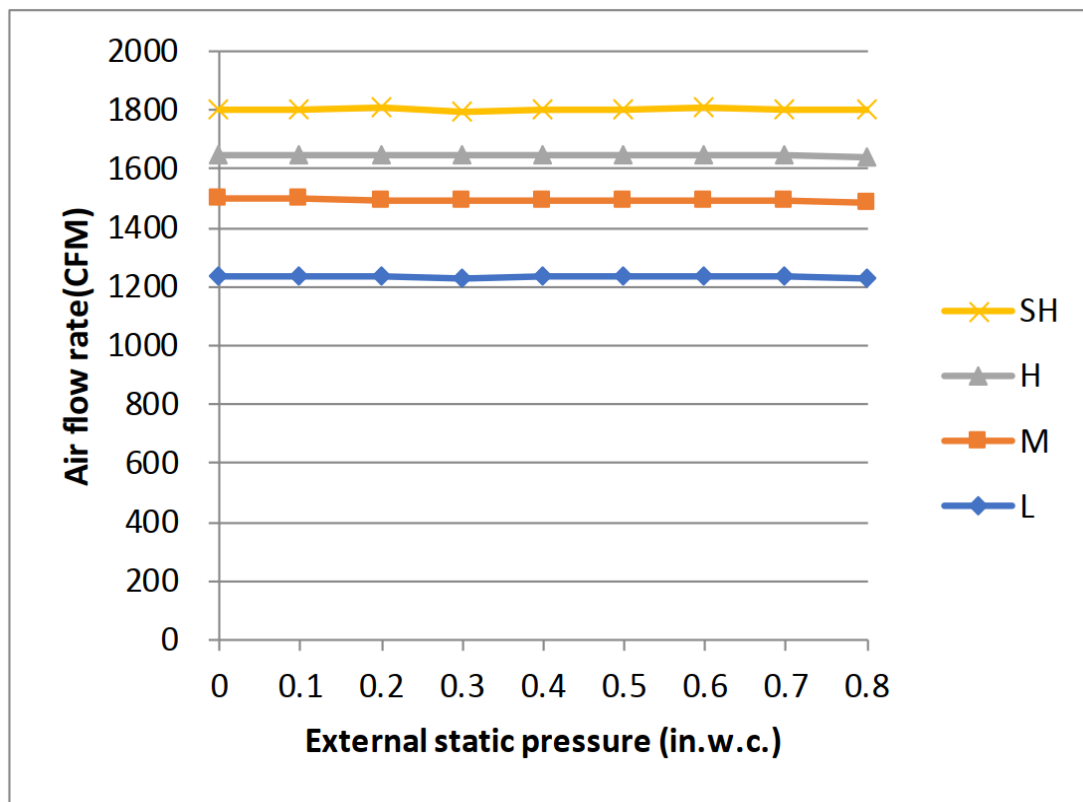
Model(Btu/h)		18K/24K		30K/36K		48K/54K	
Dimensions		inch	mm	inch	mm	inch	mm
A	Model Height	49-3/4	1263	54	1371	56	1421
B	Model Width	14-1/2	368	17-1/2	445	21-1/2	546
C	Supply Air Opening Width	12-7/8	328	16	405	19-7/8	506
D	Return Air Opening Width	13	331	16	407	20	509
E	Model Depth	21-1/2	546	21-1/2	546	21-1/2	546
F	Supply Air Opening Depth	10-5/8	271	10-5/8	271	10-5/8	271
G	Return Air Opening Depth	18-1/4	465	18-1/4	465	18-1/4	465
H	Supply Air Opening Clearance	7/8	22	7/8	22	7/8	22
I	Supply Air Opening Clearance	1	24	1	24	1	24
J	Return Air Opening Front Clearance	2-1/2	65	2-1/2	65	2-1/2	65
K	Return Air Opening Back Clearance	3/4	18	3/4	18	3/4	18
L	Top cover knock hole	/	/	9	229	10-7/8	275
M	Top cover knock hole	4-1/2	113	4-7/8	124	5-1/8	131
N	Top cover knock hole	2	51	2	51	1-5/8	41
O	Refrigerant piping flareconnection(gas)	3/4	19	3/4	19	3/4	19
P	Refrigerant piping flareconnection(liquid)	3/8	9	3/8	9	3/8	9

Outdoor Unit Dimensions



Installation Instruction For Outdoor Unit





Features

- Multi-position installation: horizontal (left or right), vertical (up or down)
- 115/230V voltage compatible for IDU
- Aluminum Coil
- Constantly Air Flow system up to 1.0 In.W.G
- Optional Auxiliary heat kit up to 25kW
- Easy Maintenance
- Multiple control options available:
 - Two way communication wired controller: 120N (X6)
 - Two way communication wired controller with built-in WiFi: 120N (X6W)
 - Wireless remote controller
 - Third-Party 24V Thermostat
- Adaptive Control System
- High efficiency up to 19 SEER2, 12.5 EER2, 10.8 HSPF2
- 100% heat output at -13F*
- Chassis heater and crankcase heater equipped as standard

* For ACIQ-36-PAH pairing with ACIQ-36-HPD, rated cooling capacity/heating capacity at -13F=100%