



# Submittal Data Sheet

Indoor Unit Model#: ACiQ-36W-WMB

Outdoor Unit Model#: ACiQ-36-HPD

## 36K DUCTED WALL MOUNT AIR HANDLER & 36K EXT. HEAT PUMP SYSTEM

Location:	Approval:
Engineer:	Date:
Submitted to:	Construction:
Submitted by:	Unit #:
Reference:	Drawing #:

System Product Code: 810175553047  
 Indoor Unit Product Code: 810175552965  
 Outdoor Unit Product Code: 810175550596



### INDOOR UNIT SPECIFICATIONS

ESP (in.W.G)		0-0.8
Indoor Air Flow (Turbo/H/M/L/Si) (CFM)		1189.0 / 1083.0 / 971.2 / 865.2 / 865.2
Indoor Noise Level (Turbo/H/M/L/Si) (dBA)		52 / 52 / 48.5 / 36.5 / 36.5
Dimension (WxDxH)	inch	22.01 x 19.02 x 40.04
	mm	559 x 483 x 1017
Package (WxDxH)	inch	24.61 x 22.83 x 46.97
	mm	625 x 580 x 1193
Net/Gross Weight	lbs	109.57 / 130.73
	kg	49.7 / 59.3

### OUTDOOR UNIT SPECIFICATIONS

Compressor Type		TWIN-ROTARY
Compressor Model		EKPQ420D1UMUA
Refrigerant		R454B
Refrigerant Oil Charge (mL)		1460
Refrigerant Oil		VG74
Outdoor Air Flow (Max) (CFM)		3001.9
Outdoor Noise Level (dBA)		64
Dimension (WxDxH)	inch	38.58 x 16.34 x 38.39
	mm	980 x 415 x 975
Package (WxDxH)	inch	45.08 x 19.69 x 42.52
	mm	1145 x 500 x 1080
Net/Gross Weight	lbs	204.15 / 235.23
	kg	92.6 / 106.7

### EFFICIENCY RATINGS

Cooling		Heating	
SEER2	16.8	HSPF2-4	9.6
EER2	11.2	COP	3.4

### COOLING PERFORMANCE

Cooling (Btu/hr)	
Rated Capacity	36000
Min/Max Capacity	13700~41500
Moisture Removal (L/h)	3.47
Standard Operating Range (°F/°C)	-22~122 (-30~50)
Rated Cooling Conditions:	Indoor: 80°F DB/67°F WB Outdoor: 95°F DB/75°F WB

### HEATING PERFORMANCE

Heating (Btu/hr)	
1. @ 47°F Rated	37000
2. @ 47°F Min/Max Capacity	10100~48500
3. @ 17°F Rated	30200
4. @ 5°F Rated: Capacity / COP	34600 / 1.8
5. @ 5°F Max: Capacity	34600
Standard Operating Range (°F/°C)	-22~75 (-30~24)
1. Rated Heating Conditions:	Indoor: 70°F DB/60°F WB Outdoor: 47°F DB/43°F WB
2. Rated Heating Conditions:	Indoor: 70°F DB/60°F WB Outdoor: 17°F DB/15°F WB
3. Heating Conditions, Compressor Operating at Max. Frequency	Indoor: 70°F DB/60°F WB Outdoor: 5°F DB/5°F WB

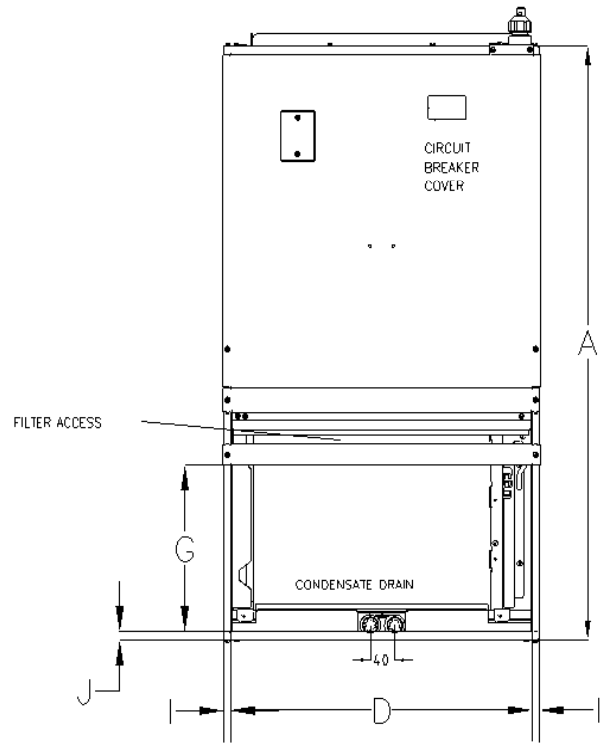
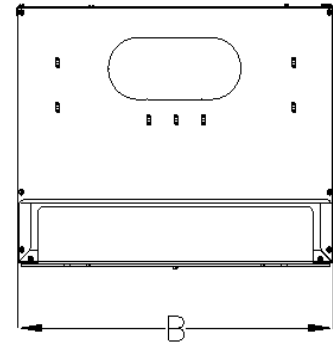
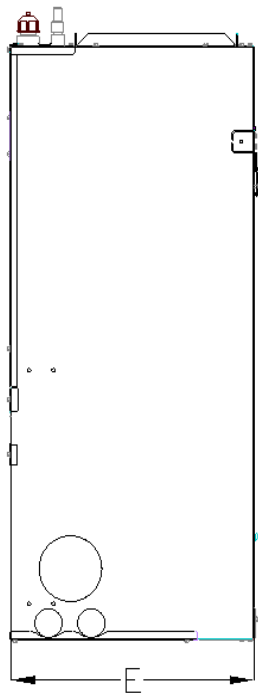
### ELECTRICAL SPECIFICATIONS

Indoor Power Supply	115V/208/230V,60Hz,1Ph
Indoor MCA 115V/(208/230V)	6.5
Indoor MOP	15
Outdoor Power Supply	208/230V,60Hz,1Ph
Outdoor MCA	32
Outdoor MOP	35
Communication Wiring	AWG 20-2
Compressor RLA	20.5
Outdoor Fan Motor RLA	2.4
Outdoor Fan Motor W	/
Indoor Fan Motor RLA	5
Indoor Fan Motor W	375
System Power Input @ Cooling (W)	3214 (1170 ~ 4400)
System Power Input @ Heating (W)	3189 (725 ~4420)
MCA: Min. circuit amps (A)	MOP: Max. overcurrent protection (A)
RLA: Rated load amps (A)	W: Fan motor rated output (W)

### REFRIGERANT PIPING SPECIFICATIONS

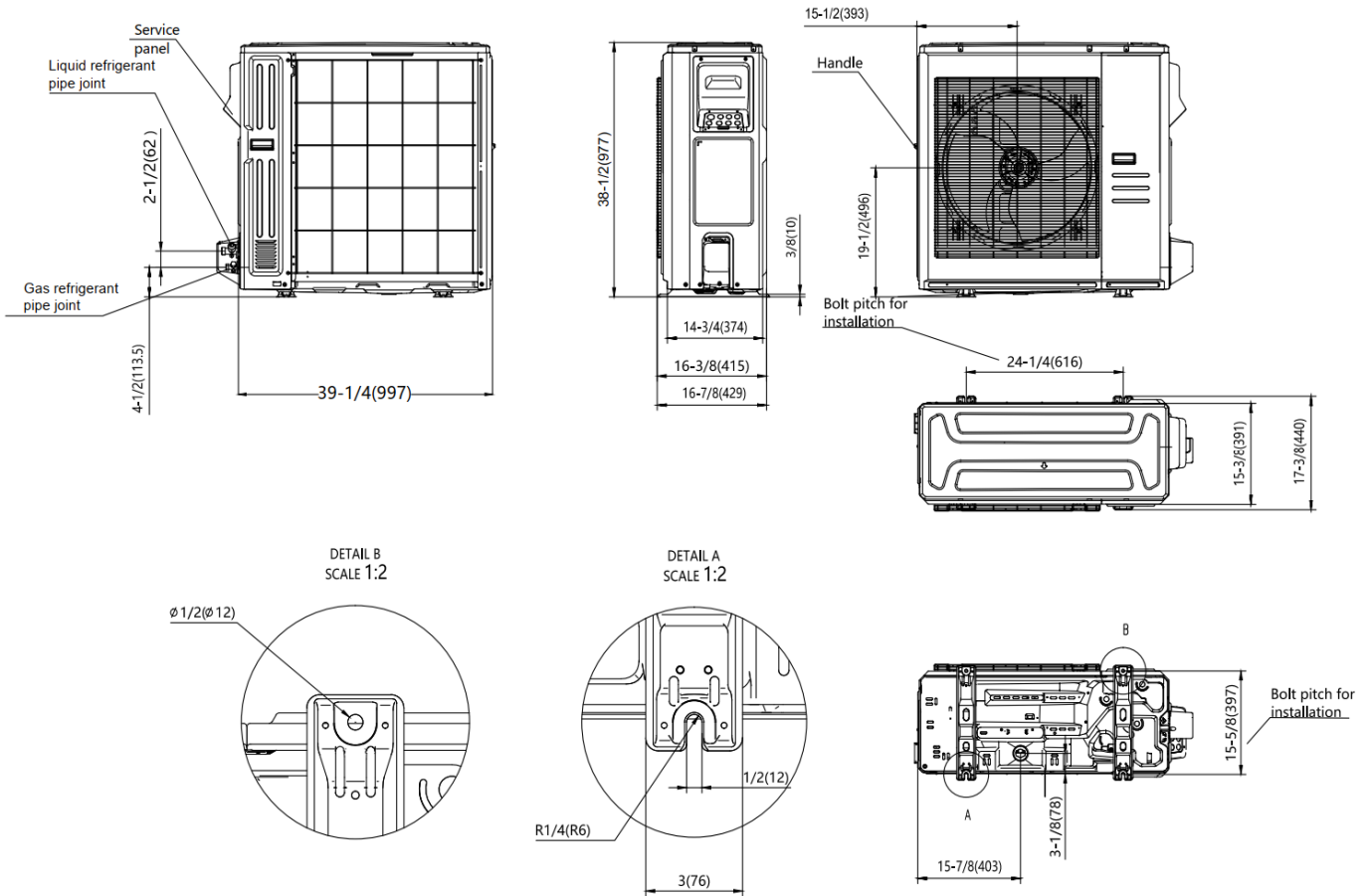
Throttle type (Indoor)	EXV
Throttle type (Outdoor)	EXV
Liquid Size	9.52mm (3/8in)
Gas Size	19mm (3/4in)
Max. Piping Length (ft/m)	246 (75)
Max. Height Difference (ft/m)	98.40 (30)
Max. Pre-charged Length (ft/m)	24.6 (7.5)
Refrigerant Pre-charged Amount (oz/kg)	126.99 (3.6)
Additional Charge of Refrigerant ((oz/ft)/(g/m))	0.7 (65)
Connection Method	Flared

INDOOR UNIT DIMENSIONS

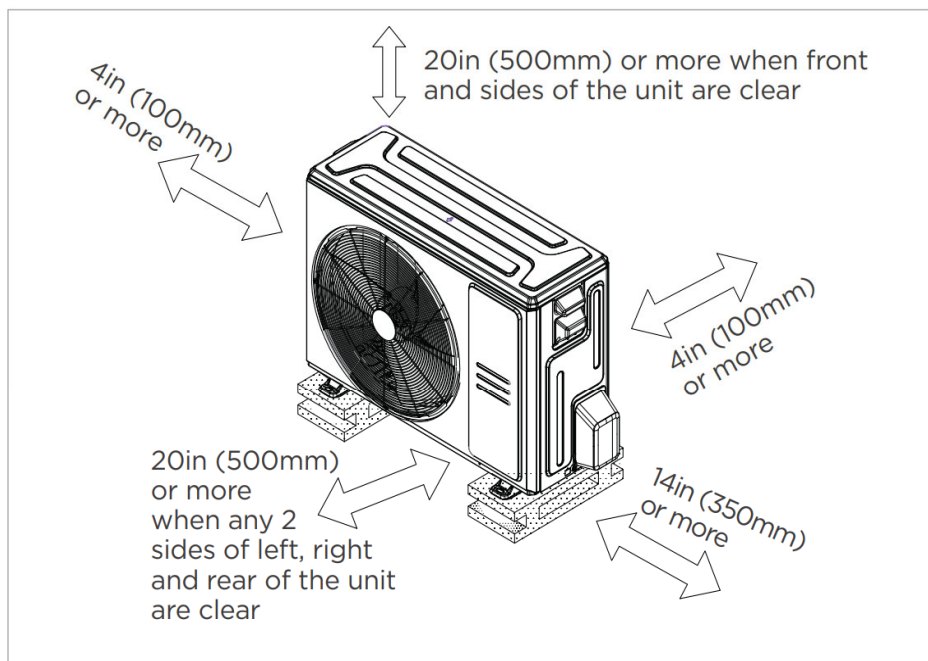


Dimensions		Model(Btu/h)	18K/24K		30K/36K	
			inch	mm	inch	mm
A	Model Height		36.5	928	49	1017
B	Model Width		20.3	515	21	559
C	Supply Air Opening Width		17.4	442	18.8	478.6
D	Return Air Opening Width		19.4	493.8	21.2	537.8
E	Model Depth		15.7	399	21	483
F	Supply Air Opening Depth		10.4	265.2	9.3	235.4
G	Return Air Opening Depth		10.3	261	13.1	332.5
H	Supply Air Opening Clearance		1.1	29.1	1.6	41
I	Return Air Opening Side Clearance		0.42	10.6	0.42	10.6
J	Return Air Opening Front Clearance		0.47	12	0.63	16

## OUTDOOR UNIT DIMENSIONS

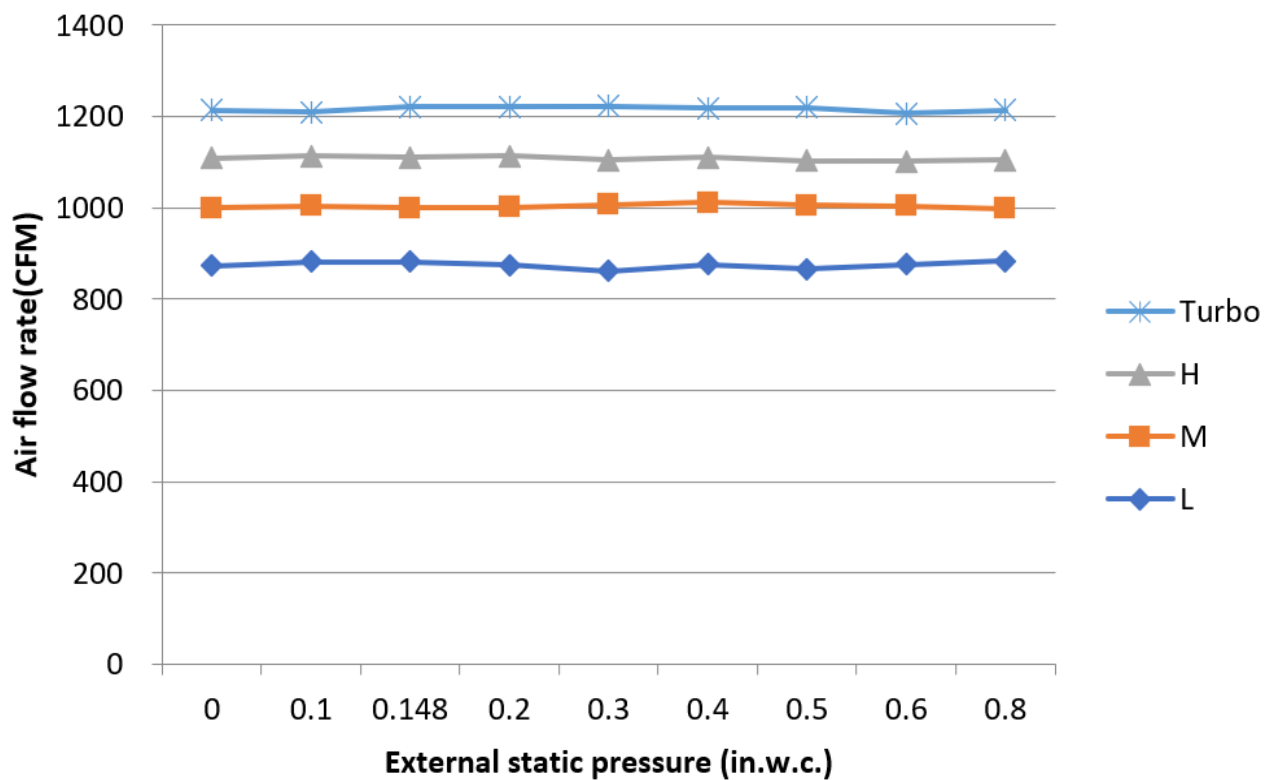


## INSTALLATION INSTRUCTIONS FOR OUTDOOR UNIT



Meets all spatial requirements shown in Installation Clearance Requirements above.

## 36K



## FEATURES

- Multi-position of return air: front (factory standard) or bottom
- Aluminum Coil
- Constantly Air Flow system up to 0.80 In.W.G
- Optional Auxiliary heat kit up to 10kW
- Easy Maintenance
- Multiple control options available:
  - Two way communication wired controller:120N(X6)
  - Two way communication wired controller with built-in WiFi:120N(X6W)
  - Wireless remote controller
  - Third-Party 24V Thermostat
- High efficiency up to 19.3 SEER2, 12.1 EER2, 10.8 HSPF2
- Chassis heater and crankcase heater equipped as standard