

Indoor Unit Model#: ACiQ-24AHB-HH-MB  
 24K R454B Ducted Air Handler for Multi-Zone Systems

Location:	Approval:
Engineer:	Date:
Submitted to:	Construction:
Submitted by:	Unit #:
Reference:	Drawing #:

Indoor Unit Product Code: 810175553757



### INDOOR UNIT SPECIFICATIONS

Indoor Air Flow (Turbo/H/M/L/Si) (CFM)	824.0 / 759.3 / 694.5 / 629.8 / 629.8	
Indoor Noise Level (Turbo/H/M/L/Si) (dBA)	43.5 / 43.5 / 41.5 / 28.5 / 28.5	
Dimension (W×D×H)	inch	17.52 x 21.02 x 45.00
	mm	445.0 x 534.0 x 1143.0
Package (W×D×H)	inch	26.57 x 20.87 x 48.62
	mm	675 x 530 x 1235
Net/Gross Weight	lbs	104.28 / 125.88
	kg	47.3 / 57.1

### ELECTRICAL SPECIFICATIONS

Power Supply	208/230V, 60Hz, 1Ph
Connection Wiring	AWG 14-4
Indoor Fan Motor RLA	3
Indoor Fan Motor W	250
RLA: Rated load amps (A)	W: Fan motor rated output (W)

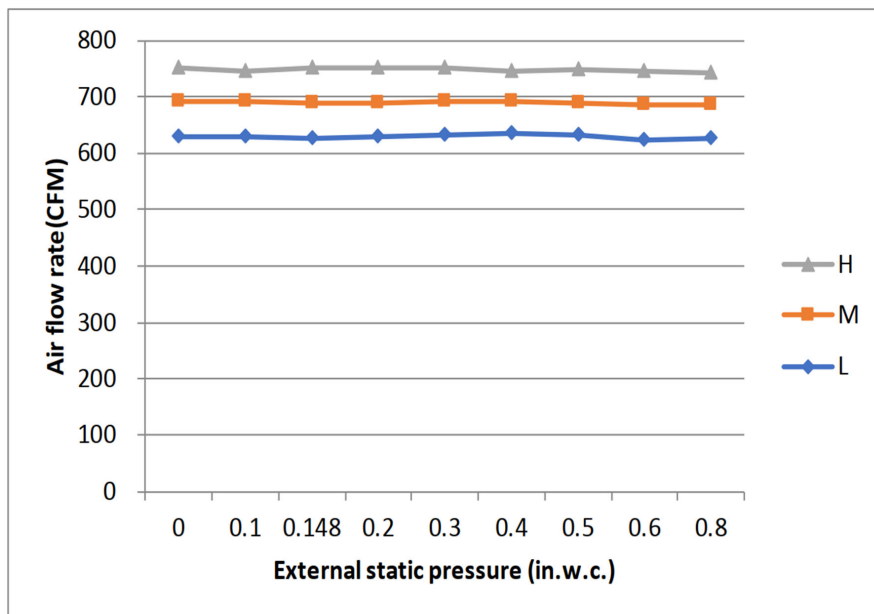
### REFRIGERANT PIPING SPECIFICATIONS

Refrigerant Type	R454B
Liquid Size	9.52mm (3/8in)
Gas Size	15.9mm (5/8in)
Connection Method	Flared

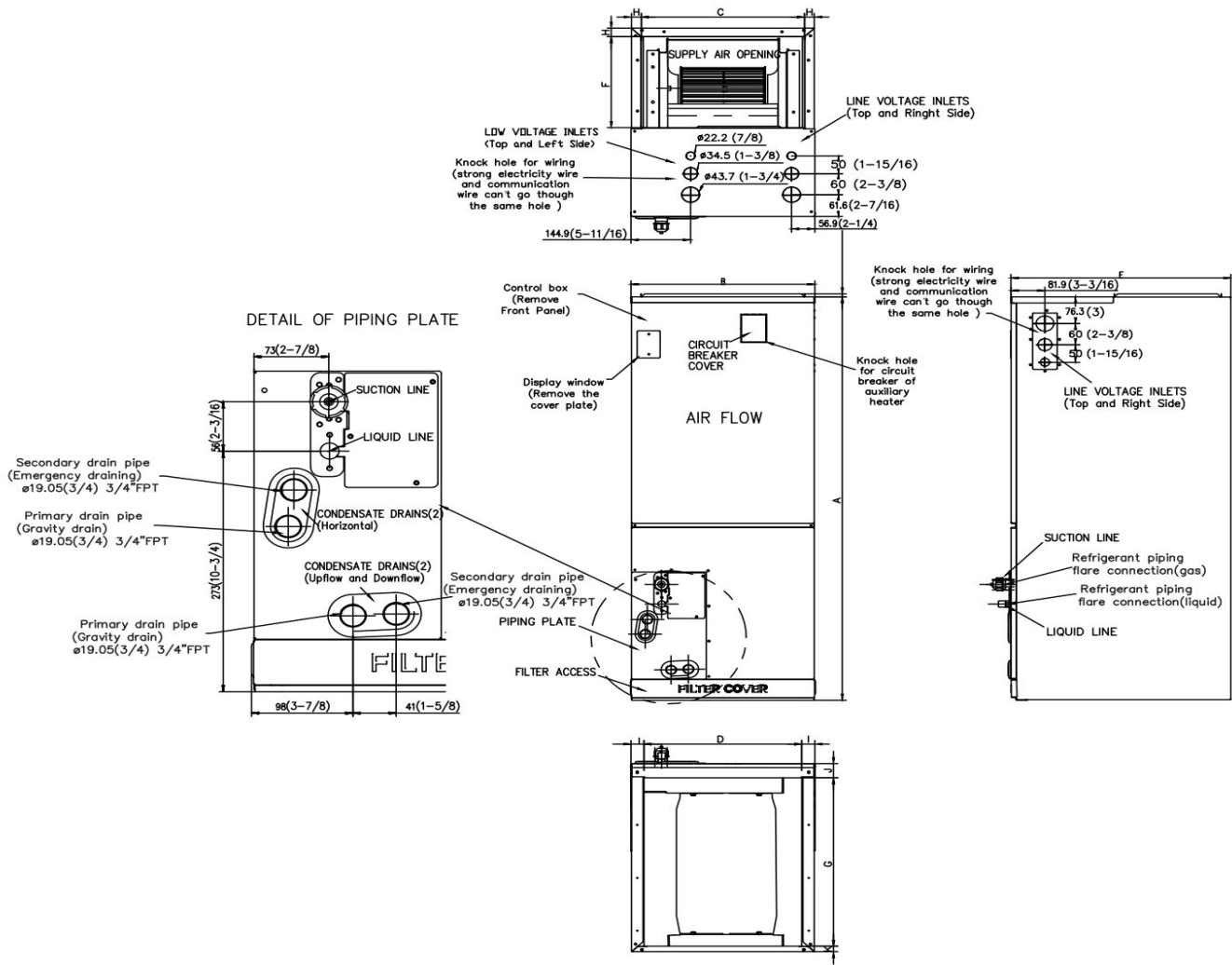
### Features

- Multi-position installation: horizontal (left or right), vertical (up or down)
- Aluminum Coil
- Constantly Air Flow system up to 0.80 In.W.G
- 1 inch R4.2 fiberglass free insulation reduces condensation and boosts efficiency (optional)
- Optional Auxiliary heat kit up to 25kW
- Easy Maintenance
- Multiple control options available:
  - Two way communication wired controller:120N(X6)
  - Two way communication wired controller with built-in WiFi:120N(X6W)
  - Wireless remote controller
  - Third-Party 24V Thermostat
- High efficiency
- Chassis heater and crankcase heater equipped as standard

### Fan Performance For Indoor Unit



## Indoor Unit Dimensions



Dimensions	Model	18k/24k		30k/36k	
		inch	mm	inch	mm
A	Model Height	45	1143	49	1245
B	Model Width	17-1/2	445	21	534
C	Supply Air Opening Width	15-5/8	397	19-1/8	486
D	Return Air Opening Width	15-1/8	384	18-5/8	473
E	Model Depth	21	534	21	534
F	Supply Air Opening Depth	10-1/4	260	10-1/4	260
G	Return Air Opening Depth	18-3/4	476	18-3/4	476
H	Supply Air Opening Clearance	15/16	24	15/16	24
I	Return Air Opening Side Clearance	1-1/4	32	1-1/4	32
J	Return Air Opening Front Clearance	1-1/2	38	1-5/8	41
K	Return Air Opening Back Clearance	5/8	16	5/8	16