



Submittal Data Sheet

Indoor Unit Model#: ACiQ-24CC-HH-MC
 Outdoor Unit Model#: ACiQ-24ZS-HP230C

24K R454B Ceiling Cassette (4-Way) & 24K Std. Heat Single-Zone Condenser System

Location:	Approval:
Engineer:	Date:
Submitted to:	Construction:
Submitted by:	Unit #:
Reference:	Drawing #:

System Product Code: 810175554976
 Indoor Unit Product Code: 810175551142
 Outdoor Unit Product Code: 810175550275









EFFICIENCY RATINGS			
Cooling		Heating	
SEER2	22	HSPF2-4	10.5
EER2	12.0	COP	3.20

COOLING PERFORMANCE	
Cooling (Btu/hr)	
Rated Capacity	24000
Min/Max Capacity	12300 ~ 26800
Moisture Removal (L/h)	2.56
Standard Operating Range (°F/°C)	-13°F ~ 122°F (-25°C ~ 50°C)
Conditions:	Indoor: 80°F DB/67°F WB Outdoor: 95°F DB/75°F WB

HEATING PERFORMANCE	
Heating (Btu/hr)	
1. @ 47°F Rated	25000
1. @ 47°F Min/Max Capacity	11600 ~ 33100
2. @ 17°F Rated	20400
3. @ 5°F Rated: Capacity / COP	18500 / 2.30
3. @ 5°F Max: Capacity	18500
Standard Operating Range (°F/°C)	-13°F ~ 75°F (-25°C ~ 24°C)
1. Conditions:	Indoor: 70°F DB/60°F WB Outdoor: 47°F DB/43°F WB
2. Conditions:	Indoor: 70°F DB/60°F WB Outdoor: 17°F DB/15°F WB
3. Conditions	Indoor: 70°F DB/60°F WB Outdoor: 5°F DB/5°F WB

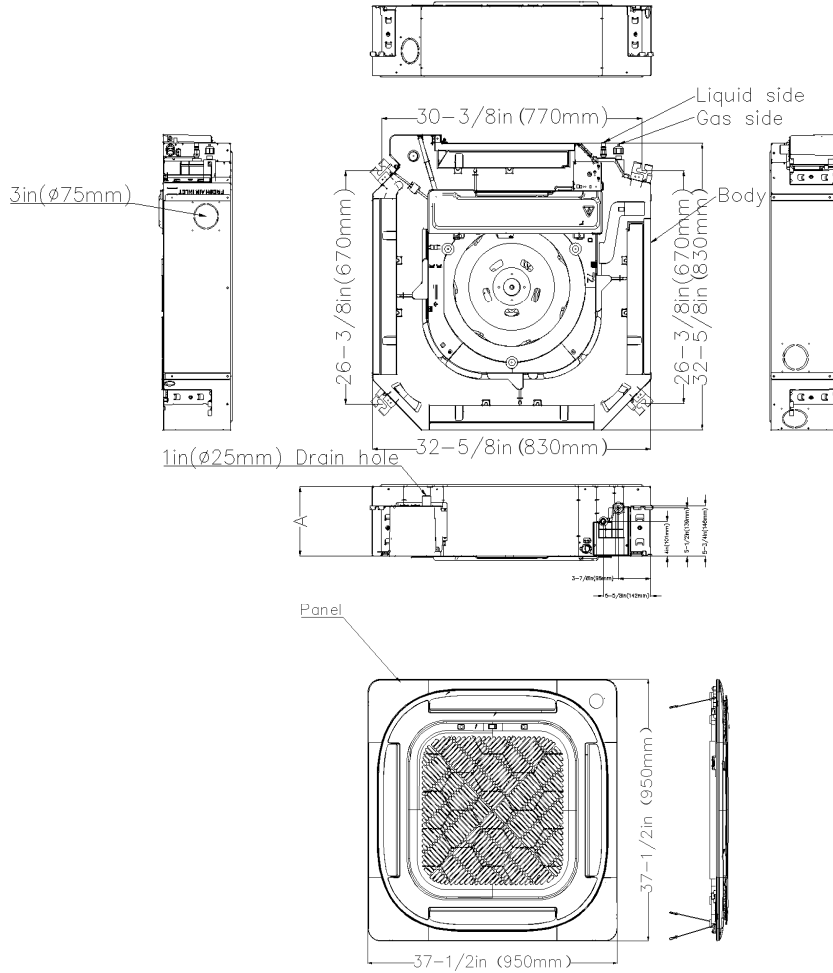
INDOOR UNIT SPECIFICATIONS		
Indoor Air Flow (Turbo/Hi/Med/Lo/Si) (CFM)	765.2 / 706.3 / 635.7 / 547.4 / 547.4	
Indoor Noise Level (Turbo/Hi/Med/Lo/Si) (dBA)	45.5 / 45.5 / 43 / 33.5 / 30.5	
Dimension (W×D×H)	inch	32.68 x 32.68 x 8.07
	mm	830.0 x 830.0 x 205.0
Package (W×D×H)	inch	35.83 x 35.83 x 9.84
	mm	910 x 910 x 250
Net/Gross Weight	lbs	47.18 / 59.08
	kg	21.4 / 26.8

OUTDOOR UNIT SPECIFICATIONS		
Compressor Type	ROTARY	
Compressor Model	KTM240D46UKT2	
Refrigerant Type	R454B	
Refrigerant Oil Charge (mL)	620	
Refrigerant Oil	VG74	
Outdoor Air Flow (Max) (CFM)	2236.7	
Outdoor Noise Level (dBA)	59.5	
Dimension (W×D×H)	inch	37.24 x 16.14 x 31.89
	mm	946.0 x 410.0 x 810.0
Package (W×D×H)	inch	42.91 x 19.68 x 34.84
	mm	1090 x 500 x 885
Net/Gross Weight	lbs	122.13 / 132.28
	kg	55.4 / 60.0

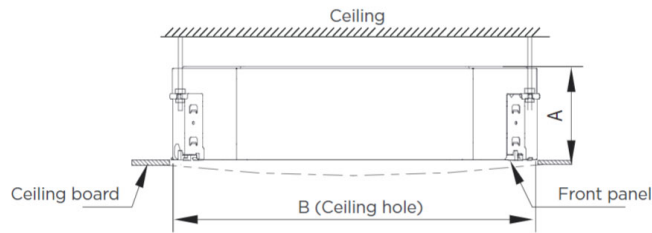
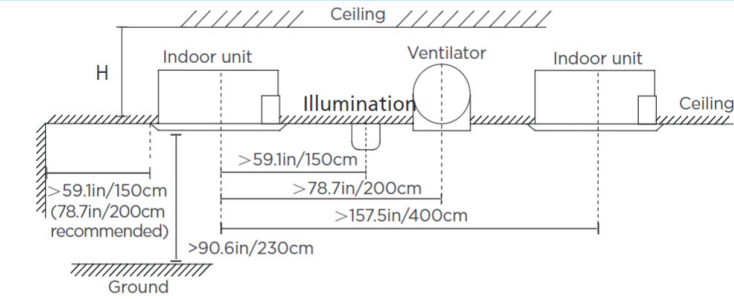
ELECTRICAL SPECIFICATIONS	
Power Supply	208/230V, 60Hz, 1Ph
System MCA	24.00
Connection Wiring	14#x4
System MOP	25
Compressor RLA	15.4
Outdoor Fan Motor RLA	1.0
Outdoor Fan Motor W	120
Indoor Fan Motor RLA	1.0
Indoor Fan Motor W	45
System Power Input @ Cooling (W)	2000 (910 ~ 2570)
System Power Input @ Heating (W)	2268 (640 ~ 2830)
MCA: Min. circuit amps (A)	MOP: Max. overcurrent protection (A)
RLA: Rated load amps (A)	W: Fan motor rated output (W)

REFRIGERANT PIPING SPECIFICATIONS	
Throttle type (Indoor)	N/A
Throttle type (Outdoor)	EXV+Throttle valve
Liquid Size	9.52mm (3/8in)
Gas Size	15.9mm (5/8in)
Max. Piping Length (ft/m)	164.00 (50)
Max. Height Difference (ft/m)	82.00 (25)
Max. Pre-charged Length (ft/m)	24.6 (7.5)
Refrigerant Pre-charged Amount (oz/kg)	70.55 (2.00)
Additional Charge of Refrigerant ((oz/ft)/(g/m))	0.32 (30)
Connection Method	Flared

Indoor Unit Dimensions



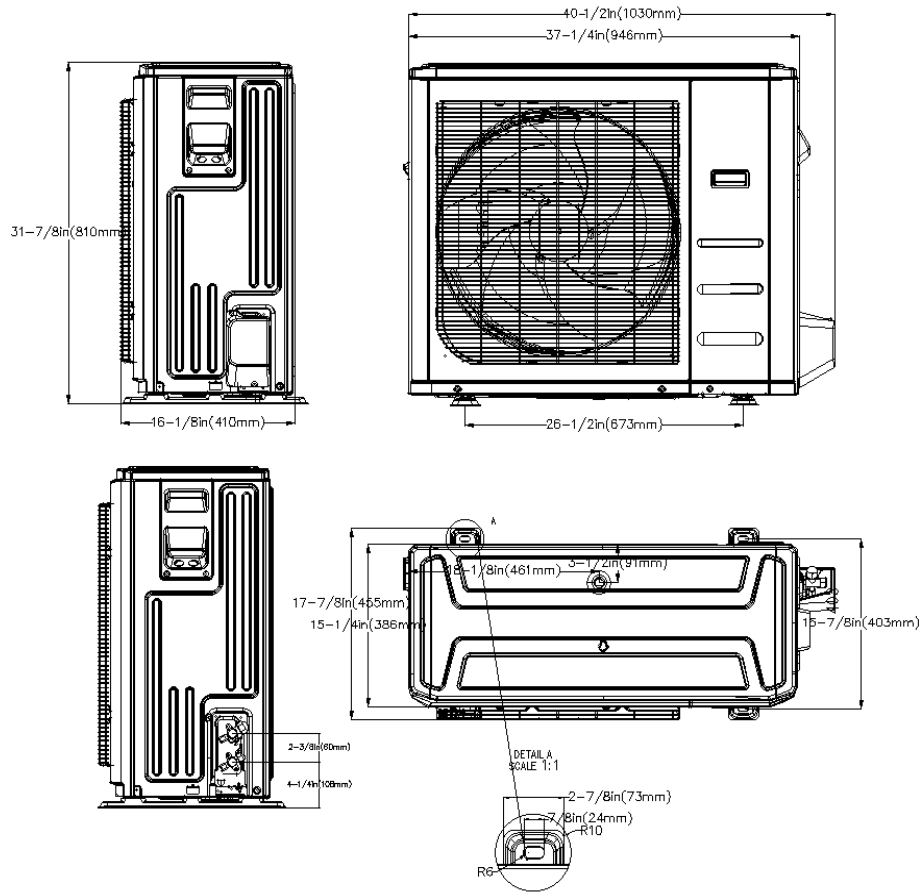
Installation Instructions



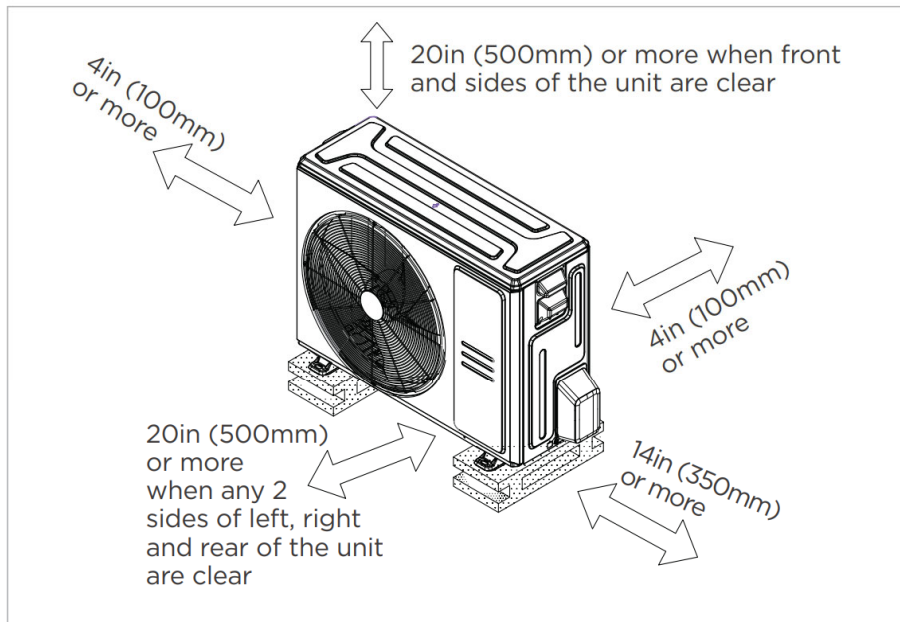
Distance from ceiling relative to height of indoor unit

MODEL	Length of A	Length of H	Length of B
9K/12K/18K	9.6in (245mm)	$>10.8\text{in}$ (275mm)	23.6in (600mm)
24K	8.03in (205mm)	9.06in (230mm)	35.4in (900mm)
36K	9.65in (245mm)	10.7in (271mm)	
48K	11.3in (287mm)	12.3in (313mm)	

Outdoor Unit Dimensions



Installation Instructions



Meets all spatial requirements shown in Installation Clearance Requirements above.

- 360° Air Flow
- Remote on-off and alarm ports
- Refrigerant leakage detection sensor (Optional)
- Humidity sensor
- Built-in pump
- 1~100% fan speed setting
- WiFi capability: through WiFi dongle or wired controller with built-in WiFi
- OTA (by using WiFi dongle)
- 2-pin connector (HA/HB) for programmable wired controller
- Multiple control options available:
 - Two way communication wired controller: 120N (X6)
 - Two way communication wired controller with built-in WiFi: 120N (X6W)
 - Infrared wired controller: 120L
 - Wireless remote controller
 - Third-Party 24V Thermostat*

*24V interface is required.