

LONESTAR™ Premium Grill



Item# 87048 LP
Item# 87049 NG

STANDARD FEATURES

- 60,000 BTUs
- 4 Welded Stainless Steel Burners
- Single Piece Dual Lined Hood
- Piezo Igniters/Zinc Control Knobs
- Solid Stainless Steel Grates
- Heavy Duty Thermometer
- Twin Lighting System
- Warming Rack 176 Sq. In.
- Cooking Surface 575 Sq. In.
- Cutout - 31" W x 9 1/2" H x 21" D



ANGUS™ Flagship Grill



Item# 47628 LP
Item# 47629 NG

STANDARD FEATURES

- 75,000 BTUs
- 4 Cast Stainless Steel Burners
- Infrared Burner 15,000 BTUs
- Single Piece Dual Lined Hood
- Piezo Igniters/Zinc Control Knobs
- Solid Stainless Steel Grates
- Heavy Duty Thermometer
- Stainless Steel Rotisserie Motor
- Twin Lighting System
- Warming Rack 176 Sq. In.
- Cooking Surface 575 Sq. In.
- Cutout - 31" W x 9 1/2" H x 21" D



BRAHMA™ Flagship Grill



Item# 57568 LP
Item# 57569 NG

STANDARD FEATURES

- 90,000 BTUs
- 5 Cast Stainless Steel Burners
- Infrared Burner 15,000 BTUs
- Single Piece Dual Lined Hood
- Piezo Igniters/Zinc Control Knobs
- Solid Stainless Steel Grates
- Heavy Duty Thermometer
- Stainless Steel Rotisserie Motor
- Twin Lighting System
- Warming Rack 223 Sq. In.
- Cooking Surface 720 Sq. In.
- Cutout - 38 1/2" W x 9 1/2" H x 21" D



DIABLO™ Flagship Grill



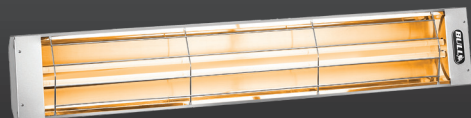
Item# 62648 LP
Item# 62649 NG

STANDARD FEATURES

- 105,000 BTUs
- 6 Cast Stainless Steel Burners
- Infrared Burner 15,000 BTUs
- Single Piece Dual Lined Hood
- Piezo Igniters/Zinc Control Knobs
- Solid Stainless Steel Grates
- Heavy Duty Thermometer
- Stainless Steel Rotisserie Motor
- Twin Lighting System
- Warming Rack 269 Sq. In.
- Cooking Surface 866 Sq. In.
- Cutout - 46" W x 9 1/2" H x 21" D



Countertop Pizza Oven
Dual Fuel LP, Gas, or Wood
Item# 69550 LP, 69564 NG



POWER WARM 48"
5000-Watt Infrared Dual Mount Outdoor Heater
Item #26200

NOW included on All Bull Grills!



Bull's Flame Tamer and Burner technology minimizes uneven heating and improves heat distribution on your grill by 150%. We've reduced the hot and cold spots so you can use the entire grill.

(800) 521-2855

BULLBBQ.COM



The Brand Choice for Commercial and Professional BBQs
©2025 Bull Outdoor Products, Inc. © All Rights Reserved.

bop2501 # 24156



BULLBBQ.COM

GRILLS & COMPONENTS



STEER™ Premium Grill



Item# 69008 LP
Item# 69009 NG

STANDARD FEATURES

- 45,000 BTUs
- 3 Welded Stainless Steel Burners
- Single Piece Dual Lined Hood
- Piezo Igniters/Zinc Control Knobs
- Solid Stainless Steel Grates
- Heavy Duty Thermometer
- Warming Rack 129 Sq. In.
- Cooking Surface 429 Sq. In.
- Cutout - 25 5/8" W x 9 1/2" H x 21" D



OUTLAW™ Premium Grill



Item# 26038 LP
Item# 26039 NG

STANDARD FEATURES

- 60,000 BTUs
- 4 Welded Stainless Steel Burners
- Single Piece Dual Lined Hood
- Piezo Igniters/Zinc Control Knobs
- Solid Stainless Steel Grates
- Heavy Duty Thermometer
- Warming Rack 176 Sq. In.
- Cooking Surface 575 Sq. In.
- Cutout - 31" W x 9 1/2" H x 21" D



BISON™ Premium Grill



Item# 88787

STANDARD FEATURES

- Stainless Steel Construction
- Single Piece Dual Lined Hood
- Stainless Steel Grates
- Adjustable Charcoal Bed
- Heavy Duty Thermometer
- Warming Rack 176 Sq. In.
- Cooking Surface 575 Sq. In.
- Cutout - 29 1/2" W x 13 1/4" H x 18 1/2" D

COMMERCIAL GRIDDLE™ Premium Griddle



Item# 92008 LP
Item# 92009 NG

STANDARD FEATURES

- 60,000 BTUs
- 4 Welded Stainless Steel Burners
- Piezo Igniters/Zinc Control Knobs
- Cast Iron Chromium Plated Griddle
- Full Size Grease Tray
- Cooking Surface 426 Sq. In.
- Cutout - 31" W x 9 1/2" H x 21" D



Specs and more components available online:

www.BULLBBQ.com

Specs and more components available online:

www.BULLBBQ.com



COMPONENTS BUILT FOR YOUR SPECIFIC NEEDS

Customizing your Bull Outdoor Kitchen is easy with more than 50 component upgrades. If you can dream it, we can build it. Bull Outdoor Kitchens aren't limited to just red hot flames.

DOORS & DRAWERS NOW FEATURING REVEAL TRIM EDGING



DOOR/PROPANE DRAWER COMBO
Stainless Steel
(Cutout - 31 1/8" W x 19 5/8" H x 16 9/16" D)
Item# 65790



DOOR/DRAWER COMBO 30" - Stainless Steel
(Cutout - 31" W x 19 5/8" H x 20 1/2" D) Item# 25890
DOOR/DRAWER COMBO 38" - Stainless Steel
(Cutout - 38 5/8" W x 19 5/8" H x 20 1/2" D) Item# 55890



DOOR/TRIPLE DRAWER COMBO 30"
Stainless Steel
(Cutout - 31" W x 19 5/8" H x 20 1/2" D) Item# 25900



DOUBLE TRASH/RECYCLING DRAWER
Stainless Steel
(Cutout - 18 1/2" W x 24 5/8" H x 23" D)
Double Can - Item# 56950



SINGLE SLIDE-IN PRO SIDE BURNER
Stainless Steel
(Cutout - 12 3/16" W x 9 1/2" H x 12" D)
Item# 60018 (LP) - Item# 60019 (NG)



DOUBLE SLIDE-IN SIDE BURNER W/COVER
Stainless Steel
(Cutout - 12 3/16" W x 9 1/2" H x 20 5/8" D)
Item# 30008 (LP) - Item# 30009 (NG)



ICE CHEST - Stainless Steel
(Cutout - 13 3/4" W x 15 1/2" H x 20 1/2" D)
Item# 00002



15" - 18" - 24" SINK & FAUCET - Stainless Steel
15" Dual Mount Item# 12516
18" Dual Mount Item# 12515
24" Dual Mount Item# 12530
**See Bull website for Dual Mount cutout sizes*



SLIM TRASH DRAWER - Stainless Steel
(Cutout - 14 5/16" W x 24 5/8" H x 19 3/8" D)
Single Can - Item# 56960



DOUBLE DRAWER - Stainless Steel
(Cutout - 12 7/8" W x 19 3/4" H x 20 7/16" D)
Item# 56990



TRIPLE DRAWER SYSTEM - Stainless Steel
(Cutout - 18 1/2" W x 24 5/8" H x 15 3/4" D)
Item# 58120



WARMING DRAWER - Stainless Steel
(Cutout - 28 5/8" W x 10 1/8" H x 20 15/16" D)
Item# 85747



GLASS DOOR REFRIGERATOR 4.9 cu. ft.
Stainless Steel - Outdoor Rated
(Cutout - 24 3/8" W x 33 1/4" H x 24 1/4" D)
Item# 13100



SINGLE SIDE BURNER - Stainless Steel
(Cutout - 11 1/4" W x 3 1/4" H x 17 1/2" D)
Item# 60008 (LP) - Item# 60009 (NG)



30" BAR CENTER - Stainless Steel
(Cutout - 29" W x 9 3/4" H x 22 3/4" D)
Item# 97623



REMOVABLE GRIDDLE - Stainless Steel
(15" W x 19 1/2" H) Replaces two grill grates
Item# 97020



PROPANE DRAWER - Stainless Steel
(Cutout - 14 5/8" W x 19 3/4" H x 16 1/8" D)
Item# 56830



SINGLE HORIZONTAL DOOR
Stainless Steel
(Cutout - 23 1/8" W x 15 3/4" H x 2" D)
Item# 89990



VERTICAL DOOR - Stainless Steel
(Cutout - 15 3/4" W x 19 5/8" H x 2" D)
Right Swing - Item# 89995
Left Swing - Item# 98560



VENTED VERTICAL DOOR - Stainless Steel
(Cutout - 15 3/4" W x 19 5/8" H x 2" D)
Item# 90000



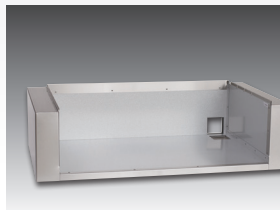
CONTEMPORARY REFRIGERATOR 4.5 cu. ft.
Stainless Steel
(Cutout - 20 3/4" W x 33 1/4" H x 21 1/4" D)
Item# 11520



PREMIUM REFRIGERATOR 4.9 cu. ft.
Stainless Steel - Outdoor Rated
(Cutout - 24 3/8" W x 33 1/4" H x 24 1/4" D)
Item# 13700



GRILL FINISHING FRAME - Stainless Steel
30" Item# 49330
38" Item# 58730
**All Finishing Frames & specs available online*



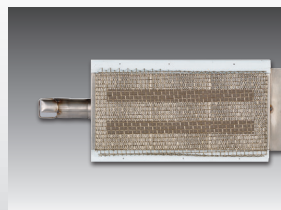
INSULATED GRILL JACKET - 30"
(Cutout - 37 7/8" W x 10" H x 22" D) Item# 47017
INSULATED GRILL JACKET - 38"
(Cutout - 45 3/8" W x 10" H x 22" D) Item# 47018



DOUBLE DOOR 25" - Stainless Steel
(Cutout - 25 1/2" W x 19 5/8" H x 2" D) Item# 33590
DOUBLE DOOR 30" - Stainless Steel
(Cutout - 31" W x 19 5/8" H x 2" D) Item# 33580
DOUBLE DOOR 38" - Stainless Steel
(Cutout - 38 1/2" W x 19 9/16" H x 2" D) Item# 34020



VENTED DOUBLE DOOR 30" - Stainless Steel
(Cutout - 31" W x 19 5/8" H x 2" D)
Item# 45580



SEARING BURNER - Angus/Brahma/Diablo
Item# 20505



POWER BURNER - W/COVER
Stainless Steel
(Cutout - 21" W x 9 1/2" H x 21" D)
Item #96000 (LP) - #96001 (NG)



BULL KEGERATOR 6.6 cu. ft.
Stainless Steel - Outdoor Rated
(Cutout - 24 1/2" W x 35" H x 25 3/4" D)
Item# 17900 - Double Tap Item# 17950



PRO ICE MAKER
Stainless Steel - Outdoor Rated
(Cutout - 15 1/2" W x 34 1/4" H x 23" D)
Item# 13200



GRILL HEAD COVERS
24" Item# 72016 - 30" Item# 45005
38" Item# 56006 - 46" Item# 72017
**All Grill Cart Covers available online*



VENT HOOD - TWIN FAN - Stainless Steel
Item# 66300 - 42"
Item# 66301 - 50"
Item# 66120 - 42" Duct Cover
Item# 66130 - 50" Duct Cover

**Cutout specifications listed may not fit your project. BEFORE YOU BUILD, Bull Outdoor Products strongly suggests that you visit: WWW.BULLBBQ.COM to download the official product spec. sheets.*

STORAGE

STORAGE

COOKING / COOLING

MISCELLANEOUS