



Electric Heating Products



Electric Unit Heaters

Electric unit heaters represent a reliable and versatile heating solution for various spaces. These units utilize electricity to generate heat, making them efficient and easy to install without the need for complex fuel systems.

Electric unit heaters are compact and can be mounted on walls or ceilings, optimizing space. They provide consistent and uniform heating, ensuring a comfortable environment. With their simplicity, effectiveness, and adaptability, electric unit heaters stand out as a convenient choice for those seeking efficient heating solutions.

HORIZONTAL ELECTRIC HEATER (HER)

Available in 8 model sizes from 10,200 to 170,600 Btu/hr

Wattage range from 3 to 25kW

Effective heat throw from 12 to 25 ft.

Recommended for use in buildings where ceilings are low with few obstructions

Normally placed around the perimeter of building

Standard horizontal air deflector blades

Hinged bottom panels for easy control access



VERTICAL ELECTRIC UNIT HEATER (VE)

Available in 9 model sizes from 17,100 to 170,600 Btu/hr

Wattage range from 5 to 50kW

Effective heat throw from 17 to 30 ft.

Recommended for high ceiling areas

Motor heat shield protects motor from hot air passing through

Offered in single- and two-stage controls



POWER-THROW™ ELECTRIC UNIT HEATER (PTE)

Available in 3 model sizes from 102,400 to 170,600 Btu/hr

Wattage range from 30 to 50kW

Effective heat throw from 45 to 75 ft.

Recommended for hard-to-heat areas such as loading docks or large warehouses

Standard horizontal air deflector blades

Offered in single- and two-stage controls



AMP DAWG™ ELECTRIC UNIT HEATER (AMP)

Available in 2 model sizes from 14,600 to 30,690 Btu/hr

Wattage range from 5.7 to 9kW

Certified for residential and commercial use

Effective heat throw up to 26 ft.

Low-voltage thermostat circuit

Offered in single- and two-stage controls

Compact height and 1 in. clearance ceiling mounting system

Quiet operation as low as 40dBA at 15 ft.



EXPLOSION PROOF ELECTRIC HEATER (HEX)

Available in 9 model sizes from 10,250 to 119,450 Btu/hr

Wattage range from 3 to 35kW

Effective heat throw from 30 to 70 ft.

Liquid to air, finned tube heat exchanger core

Ethylene glycol water mixture used as heat-transfer fluid in the heater core, providing -49°F (-45°C) freeze damage protection

Thermally protected, automatic reset, explosion-proof, motor driven fan moves air across finned tubes for even heat distribution

Automatically reset, bimetal high limit provides over-temperature protection and is rated for 100,000 cycles of service

Pressure relief valve provides over-pressure protection

Epoxy coated, 14-gauge steel cabinet contains heater core, motor, and fan assembly

Narrow-gap, two-piece fan guard shields all moving parts



Adjustable extruded aluminum louvers allow directional control of air

Copper conductor wires enclosed in steel conduits carry all electrical power

UL Listed

CORROSION-RESISTANT WASHDOWN UNIT HEATER (MEW)

Available in model sizes ranging from 10,250 to 133,100 Btu/hr

Wattage range from 3 to 39kW

NEMA type 4x protection against water penetration for longer life in corrosive or washdown environments

16-gauge stainless-steel cabinet offers industrial-grade durability

120 V controls allow for better contractor pull-in reliability



Electric Infrared Unit Heaters

Modine's line of Electric infrared heaters provide excellent heating solutions for backyard patios, restaurants, workshops and much more.

The key advantage lies in their ability to provide instant heat, making them ideal for spaces requiring quick warmth without waiting for traditional heaters to circulate air. Electric infrared heaters are also energy-efficient, as they heat targeted areas directly, avoiding unnecessary energy consumption. With diverse applications in residential, commercial, and industrial settings, these heaters offer a versatile and focused solution for achieving comfort in any environment.

MEQ ELECTRIC INFRARED HEATER (MEQ)

Available from 5,115 to 16,368 Btu/hr

Wattage range from 1,500 to 4,800W

High intensity, low light Tungsten bulb for powerful directional heat

Adjustable mounting angle for precise heat distribution

IP65 rated powder coated extruded aluminum body resists corrosion and deformation over time

Control 6 levels of heat with a remote



MES ELECTRIC INFRARED HEATER (MES)

Available from 5,115 to 10,912 Btu/hr

Wattage range from 1,500 and 3,200W

Long wave radiant and convective heat output provides consistent and powerful heat

Zero light emission that keeps the ambiance intact

Architectural design with powder coated aluminum body

Low clearance brackets

Residentially and Commercially certified for indoor use



MEL ELECTRIC INFRARED HEATER (MEL)

Available from 4,456 to 32,755 Btu/hr

Wattage range 1,360 to 9,600W

High output medium wave

High-end quality and compact, aesthetic design

Black powder-coated housing

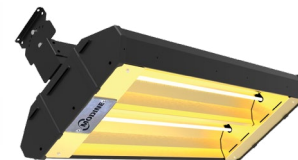
Single, double, or triple lamp models

Gold-colored anodized aluminum reflectors

Reduce light glare

High temperature nylon louvered end caps

UL Listed for indoor & outdoor commercial, outdoor residential



Modine Manufacturing Company

1500 DeKoven Avenue
Racine, Wisconsin 53403-2552
Phone: 1.800.828.4328 (HEAT)
www.ModineHVAC.com

©2024 Modine Manufacturing Co.



Follow us @ModineHVAC
See us at YouTube.com/ModineHVAC
Facebook.com/ModineHVAC
LinkedIn.com/CompanyModineHVAC