



HERO Fresh air appliances

ERV/HRV for balanced ventilation in single- and multi-family homes

The HERO residential systems with heat or energy recovery improve indoor air quality (IAQ) and help lower the project's HERS score.

- **Heat & Energy Recovery Ventilators (HRVs/ERVs)**
 - Airflows up to 252* cfm at 0.4" w.g.
 - 5" duct connection (HERO 100E and HERO 120H)
 - 6" duct connection (all other models)
 - Rubberized duct gaskets on metal collars
 - Optional MERV 8 (all models) and MERV 13 (except for HERO 100E and 120H) filters
 - Integrated balancing taps for commissioning
 - Energy-efficient counterflow core with SRE up to 84% (0C/32F)
 - Front access for fast and easy maintenance
 - Improves the home's HERS score towards a NetZero status and lowers energy costs
 - Certifications: CSA, HVI, ENERGY STAR
 - Limited warranty
- *For airflow details on specific models, see the Diagram section on this page

[Find more details in our online catalogue](#)

Energy Efficiency

Recovers up to 84% of the energy from the extracted air and uses it to temper the incoming fresh air, optimizing the energy required to pre-cool or pre-heat the fresh outside air.

Improved Indoor Air Quality

HERO® appliances supply fresh, tempered air into indoor spaces while removing excess moisture, ensuring a healthy, comfortable living environment.

Easy Installation & Maintenance

HERO® appliances include rubberized duct seals and easy-connect ports for simple set-up. Unobstructed front access allows for quick cleaning and easy maintenance.

ENERGY STAR® Certified

These appliances have been designed to meet the latest and most stringent ENERGY STAR® requirements, making them even more dependable, efficient, and simple to install.

Certifications



CSA Mark



Energy Star



HVI Certified

In the Box

This appliance comes with a wall mount, an external electrical box with easy-connect ports, integrated in-door manometer ports, and duct ports with plastic collar shrouds with integrated backdraft for simple, fast installation.

Technical parameters

Product

Voltage (nominal)	120	V
Phases	1~	
Input power	120	W
Input current	1	A
Air flow	110	cfm
Certificate	CSA, HVI, ENERGY STAR	

Exchanger

Heat exchanger	Heat recovery
----------------	---------------

Dimensions and weights

Weight	41.3	lb
--------	------	----

Used for

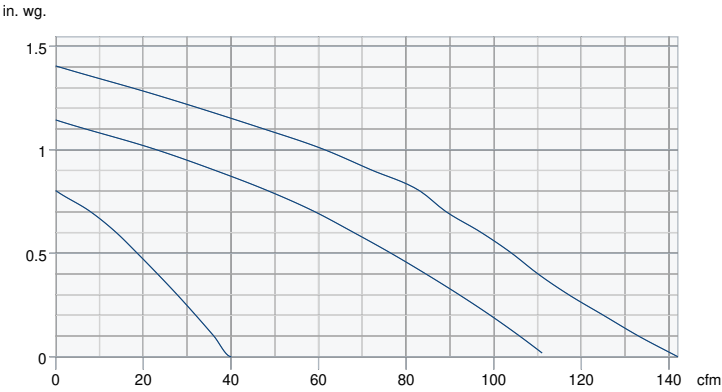
Installation type	Vertical
-------------------	----------

Performance

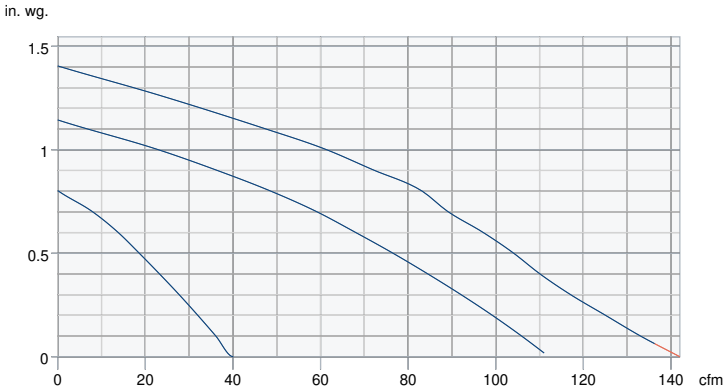
 Recommended low airflow is outside valid range

 Recommended high airflow is outside valid range

Supply - Performance curve



Extract - Performance curve



Unit	Supply	Extract
Air density	0.075 lb/ft³	

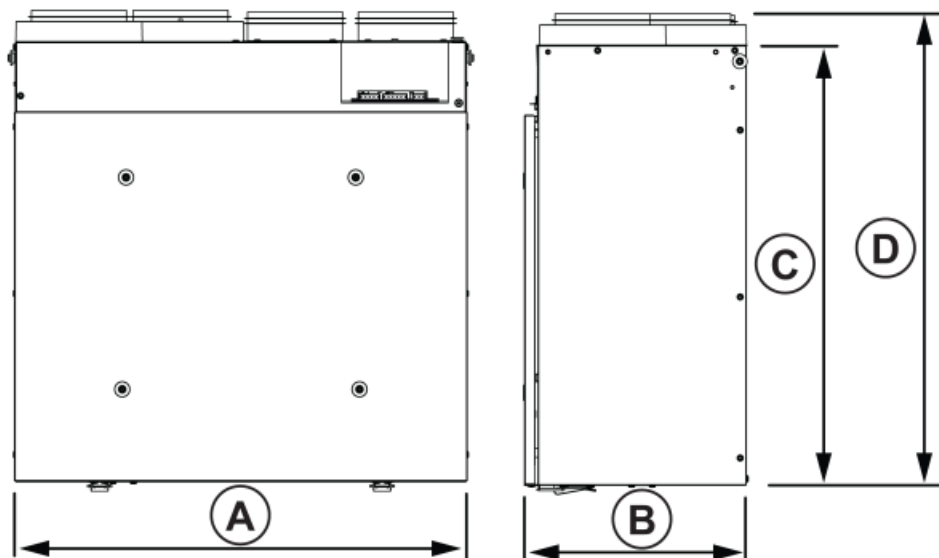
Performances

	Supply temperature	Net airflow	Consumed power	Sensible recovery efficiency	Adjusted sensible recovery efficiency	Latent recovery / moisture transfer
	°F (°C)	cfm (L/s)	W	%	%	
Heating	32 (0)	68 (32)	56	80	85	0.00
	32 (0)	97 (46)	74	78	83	0.00
	32 (0)	117 (55)	90	76	81	0.00
	-13 (-25)	72 (34)	82	64	67	0.07

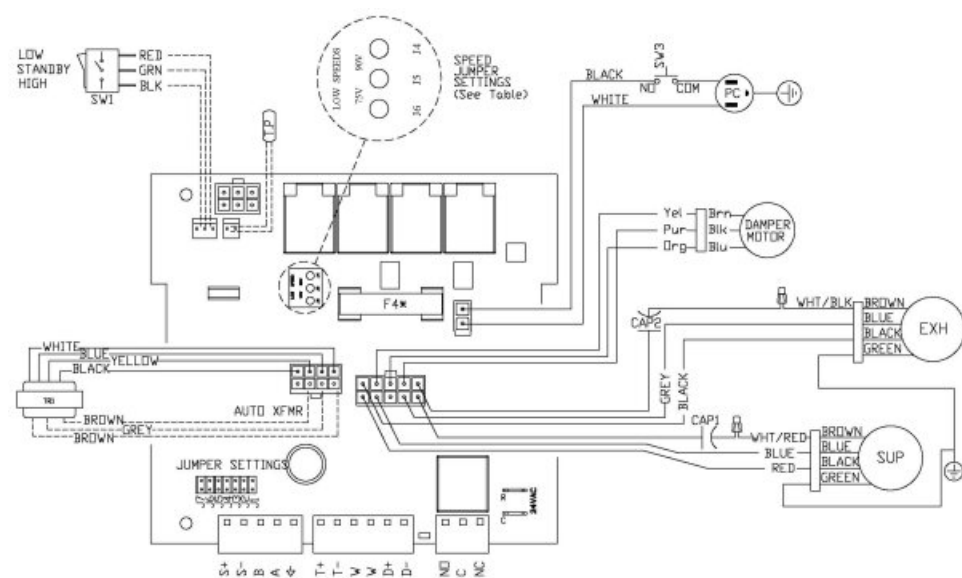
Dimensions

Model	A	B	C	D	Duct Size
HERO 100E	23 1/4 (590)	11 1/2 (291)	22 5/8 (575)	24 1/4 (616)	5 (127)
HERO 120H	23 1/4 (590)	11 1/2 (291)	22 5/8 (575)	24 1/4 (616)	5 (127)
HERO 150H	27 7/8 (707)	13 3/8 (341)	23 (584)	24 7/8 (626)	6 (152)
HERO 200H	27 7/8 (707)	15 3/8 (391)	23 (584)	5 (127)	6 (152)
HERO 150H-EC	27 7/8 (707)	13 3/8 (341)	23 (584)	24 7/8 (626)	6 (152)
HERO 250H-EC	27 7/8 (707)	15 3/8 (391)	23 (584)	24 7/8 (626)	6 (152)

Dimensions in inches (mm).



Wiring



Model	JUMPER SETTINGS							Low Speed Jumper Settings
	J7	J6	J5	J4	J3	J2	J1	
100 CFM (ERV)	ON	OFF	OFF	OFF	OFF	ON	ON	75V
120 CFM (HRV)	ON	OFF	OFF	OFF	OFF	ON	ON	
150 CFM (HRV)	ON	ON	OFF	OFF	OFF	ON	OFF	
200 CFM (HRV)	ON	ON	OFF	OFF	OFF	ON	OFF	

*F4 is 8A Fast Acting with I2T > 184
 ----- Low voltage factory wiring
 ————— Line voltage factory wiring

