

Inverter Driven Heat Pump

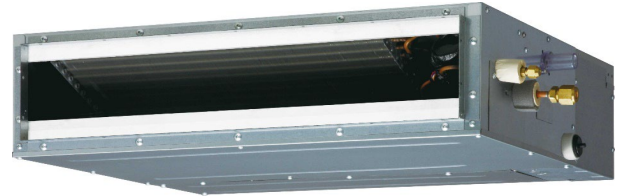
9,000 BTU Slim Duct Type

Job Name _____
 Location _____
 Engineer _____
 Submitted To _____
 Submitted By _____
 Reference _____

Date _____
 Approval _____
 Construction _____
 Unit No _____
 Drawing No _____

PRODUCT FEATURES

- Automatic Changeover
- Auto/Cool/Dry/Fan/Heat Modes
- 24 Hr./Weekly timer
- Built in Condensate Pump
- Economy Mode
- Auxiliary Heat Control Logic
- Auto Restart



MODEL NUMBERS

Indoor Unit	ADUH09LUAS1
Nominal Capacity	9,000

LINESET REQUIREMENTS

Connection Method		Flare
Liquid	in (mm)	Ø1/4 (Ø6.35)
Gas		Ø3/8 (Ø9.52)
Drain hose	Material	PVC
	in	Ø 1 (I.D.), Ø 1-1/4 (O.D.)
	mm	Ø 25 (I.D.), Ø 32 (O.D.)

INDOOR DIMENSIONS & WEIGHT

Net (H x W x D)	in	7-13/16 x 27-9/16 x 24-7/16
	mm	198 x 700 x 620
Gross (H x W x D)	in	10-13/16 x 37-3/16 x 30-3/8
	mm	274 x 945 x 772
Net Weight	lb (kg)	37 (17)
Gross Weight		49 (22)

ELECTRICAL SPECIFICATIONS

Voltage/Frequency/Phase		208/230 V ~ 60 Hz
Voltage Range		187-264 V
Running Current	A	0.3
Input Power	W	49

SOUND PRESSURE

Indoor Unit	Cooling	High	dB (A)	28
		Medium		27
		Low		26
		Quiet		25
	Heating	High	dB (A)	28
		Medium		26
		Low		25
		Quiet		24

FAN DATA

Airflow Rate	Cooling	High	CFM (m3/h)	353 (600)
		Medium		324 (550)
		Low		294 (500)
		Quiet		265 (450)
	Heating	High	CFM (m3/h)	353 (600)
		Medium		324 (550)
		Low		294 (500)
		Quiet		265 (450)
Recommended Static Pressure	WG (Pa)		0 to 0.36 (0 to 90)	

Warranty Information



7 Year Compressor, 5 Year Parts out-of-the-box Warranty



10 Year Compressor, 10 Year Parts Warranty when registered within 60 days of installation in a residence



12 Year Compressor, 12 Year Parts Warranty when registered within 60 days of installation in a residence, and installed by a Fujitsu Elite contractor

ACCESSORIES

UTY-RNRUZ Series	Wired Remote Controller
UTY-RSRY	Simple Remote Controller
UTY-RHRY	Simple Remote Controller
UTY-LBTUM	IR Kit (Remote & IR Receiver Unit)
UTY-TFSXZ2	Wireless LAN Interface
UTY-TTRXZ1	24V Thermostat Interface
UTD-VMSX	MODBUS Converter
FJ-AC-BAC-1L	BACnet Gateway
UTD-GXTB-W	Auto Louver Grille Kit
UTY-XWZXZG	External Connect Kit



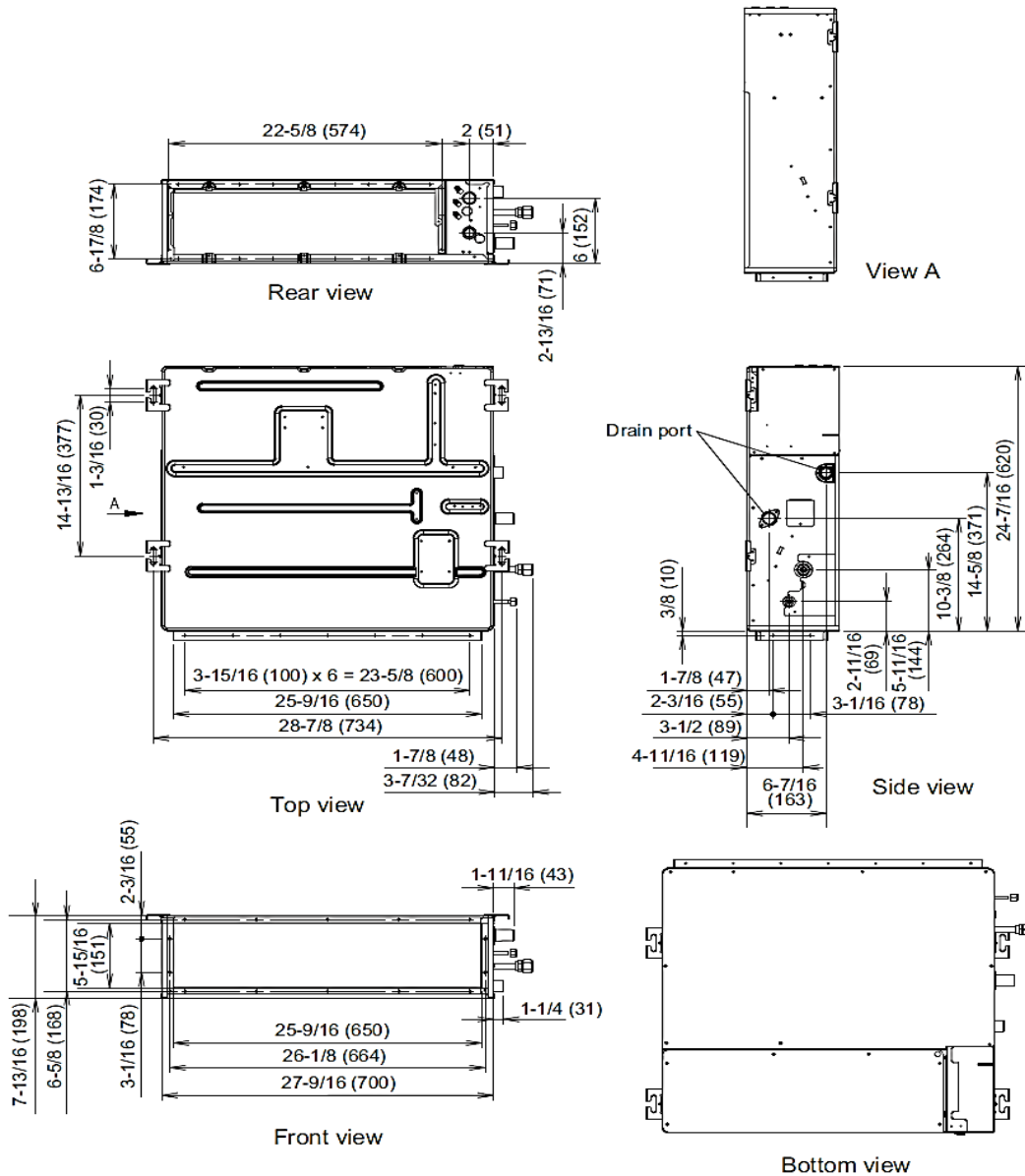
Effective Date: 2/16/2022

Version ADUH09LUAS1 -2022A

Due to continuous product improvements, specifications are subject to change without notice. Please log in to the Fujitsu Portal for the most up-to-date documentation <https://connect.fujitsugeneral.com>

DIMENSIONS

Units: In. (mm)



The Fujitsu logo is a worldwide trademark of Fujitsu General Limited. The Halcyon logo and name is a worldwide trademark of Fujitsu General America, Inc. Fujitsu's products are subject to continuous improvements. Fujitsu reserves the right to modify product design, specifications and information in this brochure without notice and without incurring any obligations.

Note: Specifications are based on the following conditions:
 Cooling: Indoor temperature of 80°F (26.7°C) DB/67°F (19.4°C) WB, and outdoor temperature of 95°F (35°C) DB/75°F (23.9°C) WB. Heating: Indoor temperature of 70°F (21.1°C) DB/60°F (15.6°C) WB, and outdoor temperature of 47°F (8.3°C) DB/43°F (6.1°C) WB. Pipe length: 25ft. (7.5m), Height difference: 0ft. (0m) (Outdoor unit - indoor unit).