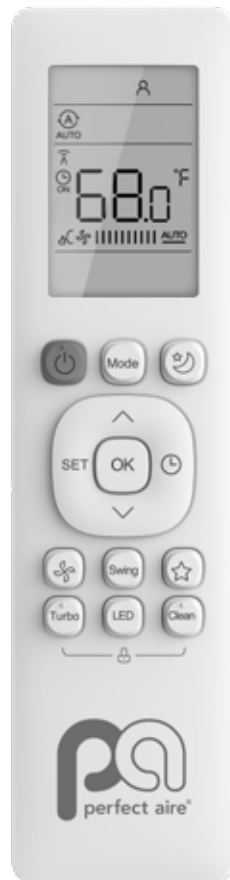




## OWNER'S MANUAL

# REMOTE CONTROL

### MULTI-ZONE MINI-SPLIT



RG10B(D1)/BGEFU1



RG10A(D2S)/BGEFU1

MODELS: 3PAMSDH09, 3PAMSDH12, 3PAMSDH18, 3PAMSDH24,  
3PAMSCH12, 3PAMSCH18, 3PAMSCH24, 3PAMSCONH12, 3PAMSFCH18

# TABLE OF CONTENTS

QUICK START GUIDE ..... 4

HANDLING THE REMOTE CONTROL..... 5

BUTTONS AND FUNCTIONS RG10B(D1)/BGEFU1..... 6

REMOTE SCREEN INDICATORS RG10B(D1)/BGEFU1..... 7

BUTTONS AND FUNCTIONS RG10A(D2S)/BGEFU1 ..... 8

REMOTE SCREEN INDICATORS RG10A(D2S)/BGEFU1 ..... 9

HOW TO USE BASIC FUNCTIONS..... 10


HOW TO USE ADVANCED FUNCTIONS..... 12

## SPECIFICATIONS:

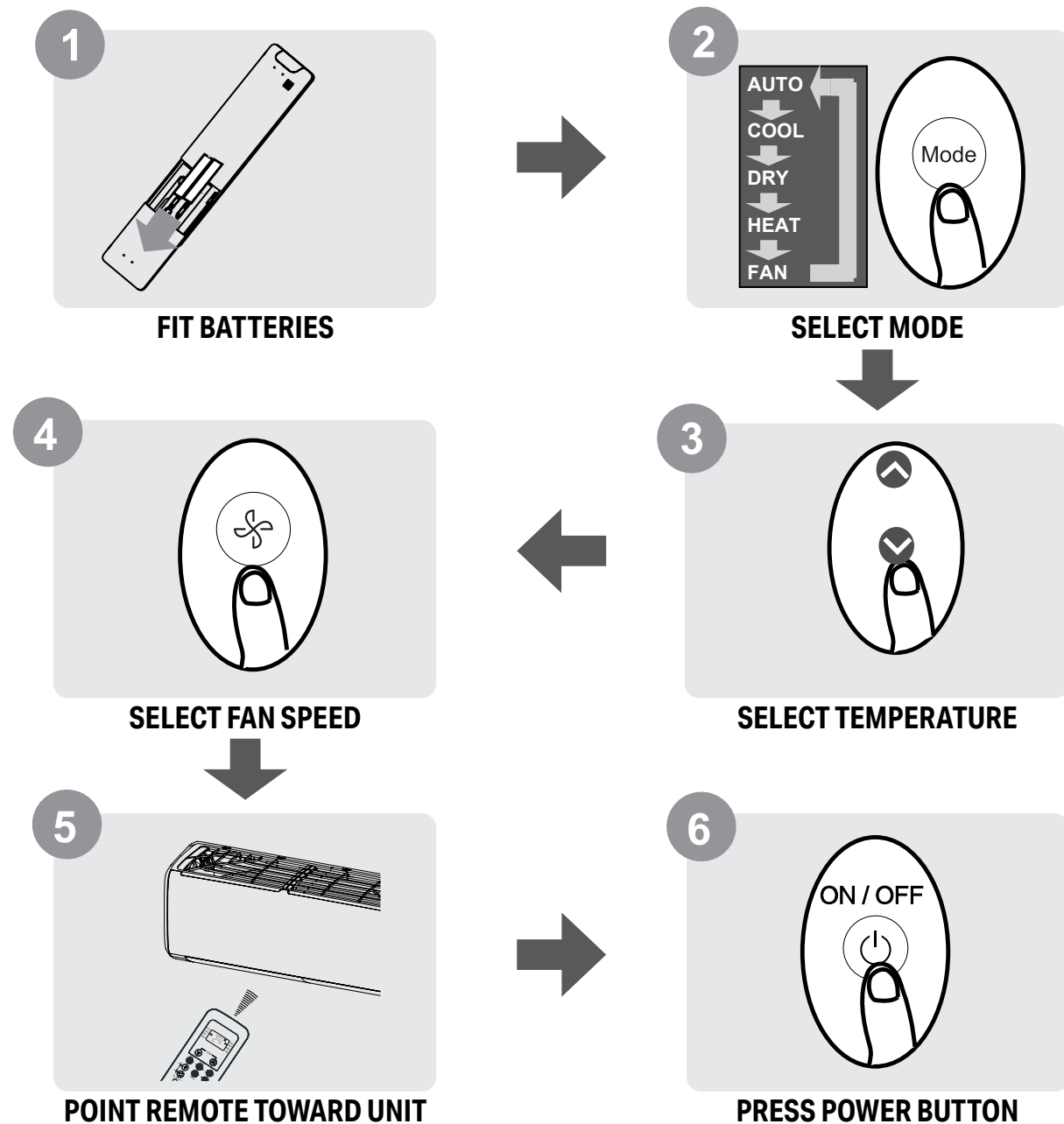
<b>Remote Models</b>	RG10B(D1)/BGEFU1, RG10A(D2S)/BGEFU1
<b>Indoor Unit Models</b>	3PAMSDH09, 3PAMSDH12, 3PAMSDH18, 3PAMSDH24, 3PAMSCH12, 3PAMSCH18, 3PAMSCH24, 3PAMSCONH12, 3PAMSFCH18
<b>Rated Voltage</b>	3.0V (Dry batteries R03/LR03×2)
<b>Signal Receiving Range</b>	24 ft. / 8 m
<b>Environment</b>	23°F~140°F(-5°C~60°C)

### IMPORTANT NOTE:

Read the manual carefully. Make sure to save this manual for future reference. Illustrations in this manual are for explanatory purposes only, your actual product may look slightly different.

 **WARNING:** Cancer [www.P65Warnings.ca.gov](http://www.P65Warnings.ca.gov)

## QUICK START GUIDE



### NOT SURE WHAT A FUNCTION DOES?

Refer to the **How to Use Basic Functions** and **How to Use Advanced Functions** sections of this manual for a detailed description of how to use your air conditioner.

### SPECIAL NOTE:

- Button designs on your unit may differ slightly from the example shown.
- If the indoor unit does not have a particular function, pressing that function's button on the remote control will have no effect.
- When there are wide differences between "Remote control Manual" and "USER'S MANUAL" on function description, the description of "USER'S MANUAL" shall prevail.

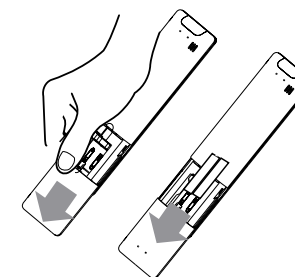
## HANDLING THE REMOTE CONTROL

### INSERTING AND REPLACING BATTERIES

Your air conditioning unit may come with two AAA batteries. Put the batteries in the remote control before use.

- 1 Slide the back cover from the remote control downward, exposing the battery compartment.
- 2 Insert the batteries, paying attention to match up the (+) and (-) ends of the batteries with the symbols inside the battery compartment.

- 3 Slide the battery cover back into place.



### ⚠ BATTERY NOTES For optimum product performance:

- Do not mix old and new batteries, or batteries of different types.
- Do not leave batteries in the remote control if you don't plan on using the device for more than 2 months. Do not dispose of batteries as unsorted municipal waste. Refer to local laws for proper disposal of batteries.

### TIPS & REGULATIONS FOR USING REMOTE CONTROL

#### TIPS

- The remote control must be used within 24 Feet / 8 Meters of the unit.
- The unit will beep when remote signal is received.
- Curtains, other materials and direct sunlight can interfere with the infrared signal receiver.
- Remove batteries if the remote will not be used more than 2 months.

#### REGULATIONS

The device could comply with the local national regulations.

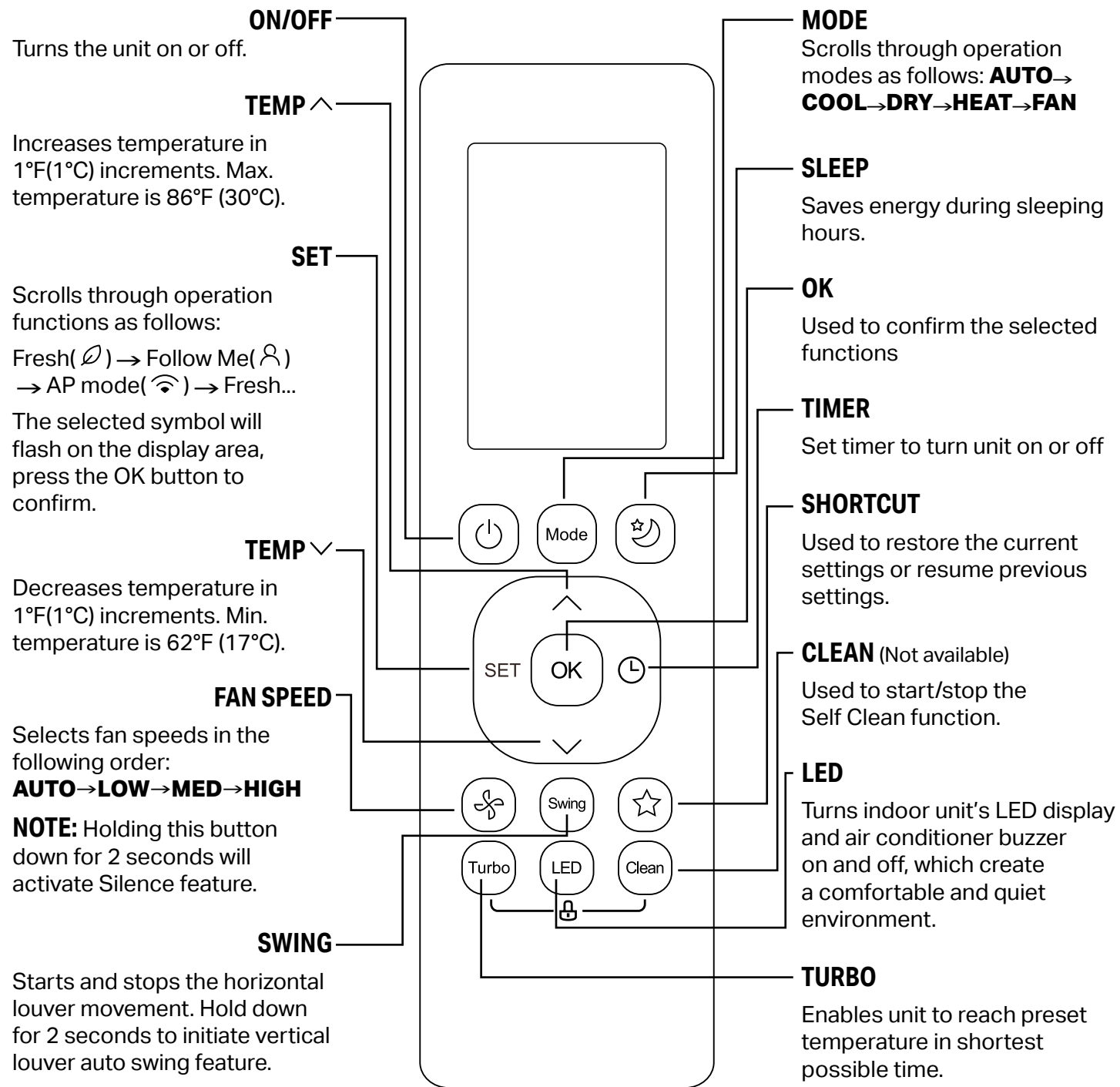
- In Canada, it should comply with CAN ICES-3(B)/NMB-3(B).
- In USA, this device complies with part 15 of the FCC Rules. Operation is subject to the following two conditions:
  - (1) This device may not cause harmful interference, and
  - (2) this device must accept any interference received, including interference that may cause undesired operation.

This equipment has been tested and found to comply with the limits for a Class B digital device,

pursuant to part 15 of the FCC Rules. These limits are designed to provide reasonable protection against harmful interference in a residential installation. This equipment generates, uses and can radiate radio frequency energy and, if not installed and used in accordance with the instructions, may cause harmful interference to radio communications. However, there is no guarantee that interference will not occur in a particular installation. If this equipment does cause harmful interference to radio or television reception, which can be determined by turning the equipment off and on, the user is encouraged to try to correct the interference by one or more of the following measures:

- Reorient or relocate the receiving antenna.
- Increase the separation between the equipment and receiver.
- Connect the equipment into an outlet on a circuit different from that to which the receiver is connected.
- Consult the dealer or an experienced radio/TV technician for help.
- Changes or modifications not approved by the party responsible for compliance could void user's authority to operate the equipment.

# BUTTONS AND FUNCTIONS RG10B(D1)/BGEFU1



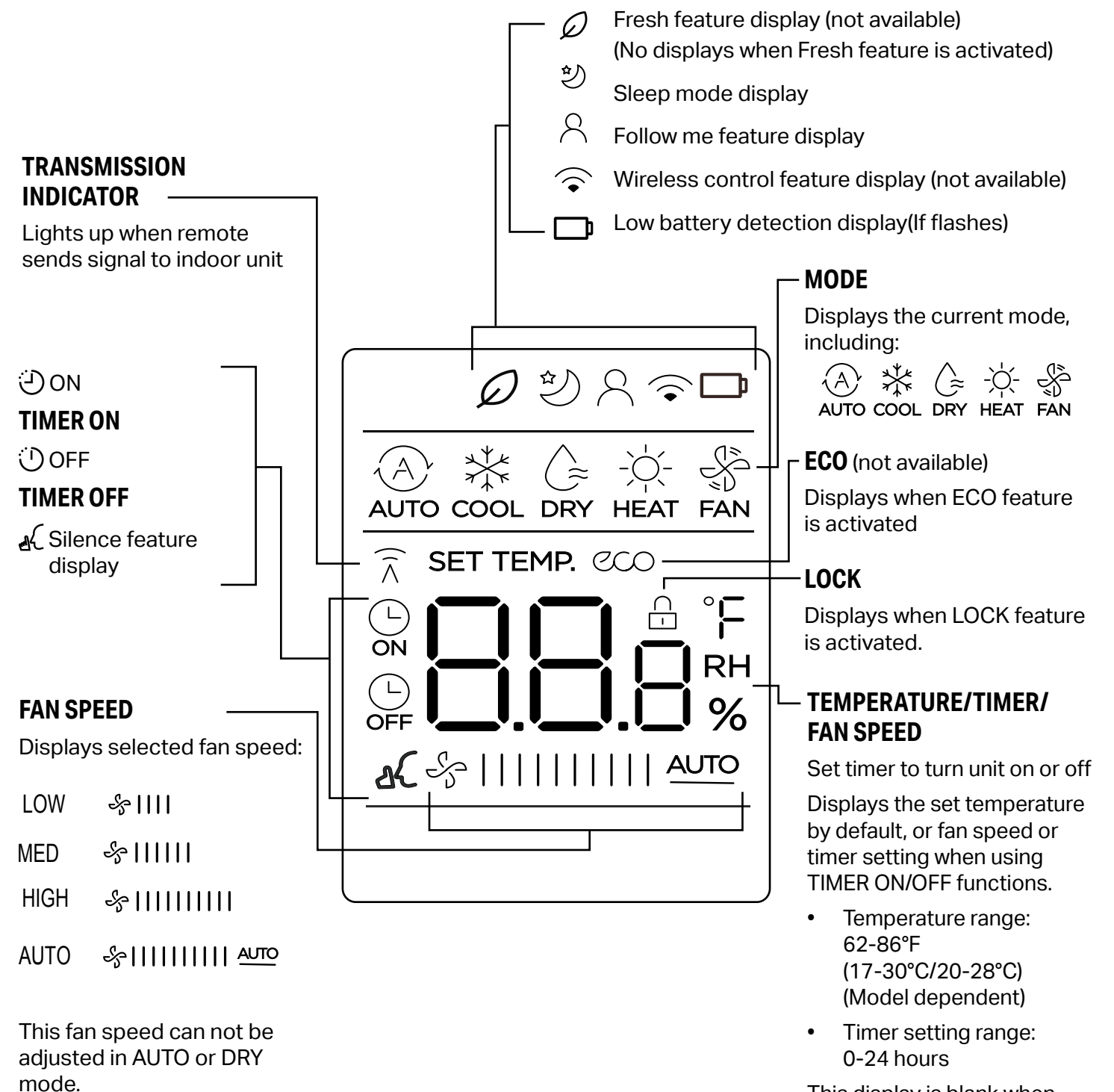
**Remote Model: RG10B(D1)/BGEFU1**

**COMPATIBLE WITH THE FOLLOWING INDOOR UNIT MODELS:**

3PAMSDH09, 3PAMSDH12, 3PAMSDH18, 3PAMSDH24, 3PAMSCH12, 3PAMSCH18, 3PAMSCONH12, 3PAMSFCH18

**NOTE:** For RG10B(D1)/BGEFU1 model, press together ^ & v buttons at the same time for 3 seconds will alternate the temperature display between the °F & °C scale. Fresh feature is not available. AP Feature not available.

# REMOTE SCREEN INDICATORS RG10B(D1)/BGEFU1



**Remote Model: RG10B(D1)/BGEFU1**

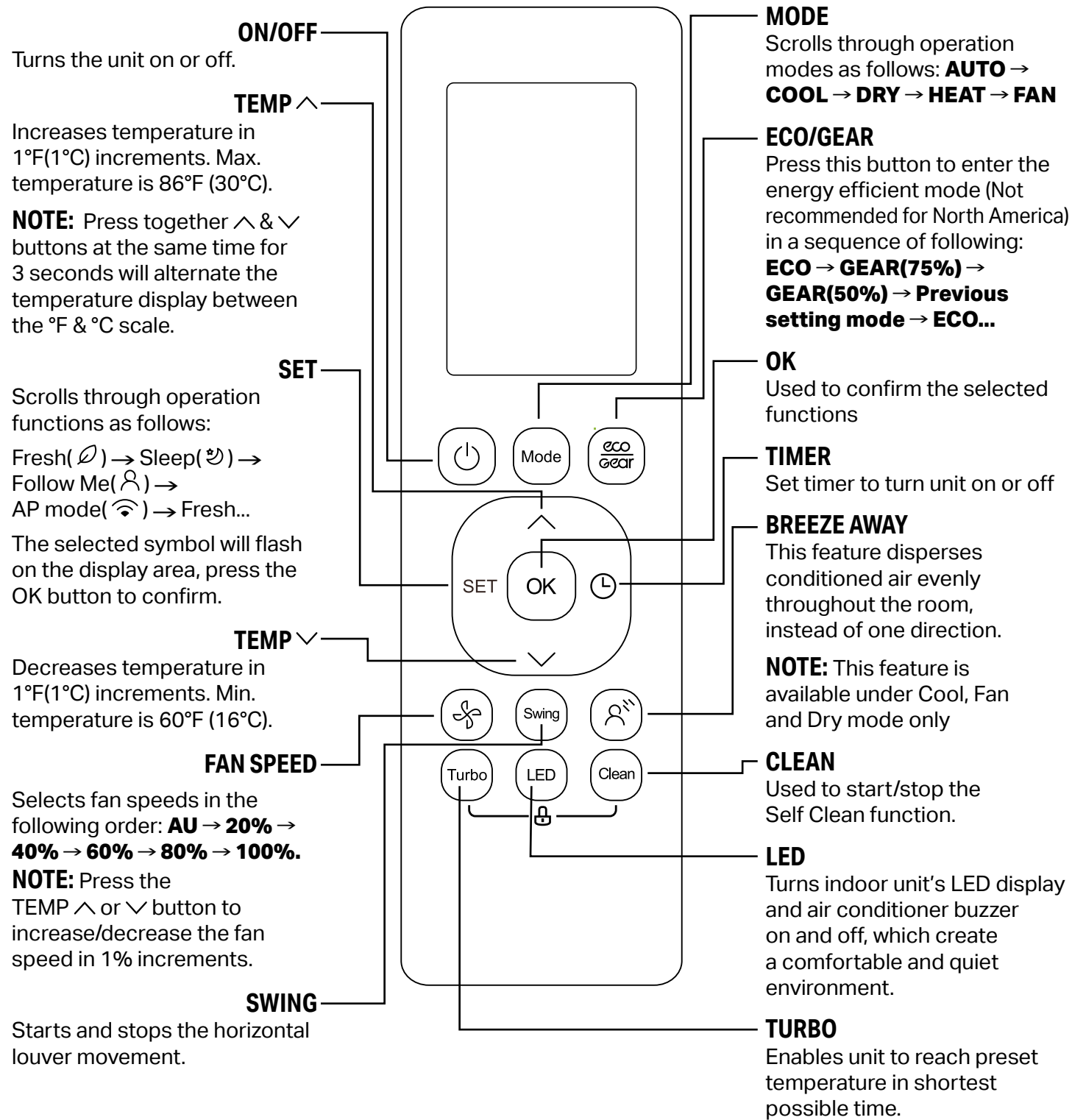
**COMPATIBLE WITH THE FOLLOWING INDOOR UNIT MODELS:**

3PAMSDH09, 3PAMSDH12, 3PAMSDH18, 3PAMSDH24, 3PAMSCH12, 3PAMSCH18, 3PAMSCONH12, 3PAMSFCH18

**NOTE:** All indicators shown in the figure are for the purpose of clear presentation. But during the actual operation, only the relative function signs are shown on the display window.

# BUTTONS AND FUNCTIONS RG10A(D2S)/BGEFU1

Before you begin using your new air conditioner, make sure to familiarize yourself with its remote control. The following is a brief introduction to the remote control itself. For instructions on how to operate your air conditioner, refer to the **How to Use Basic Functions** section of this manual.

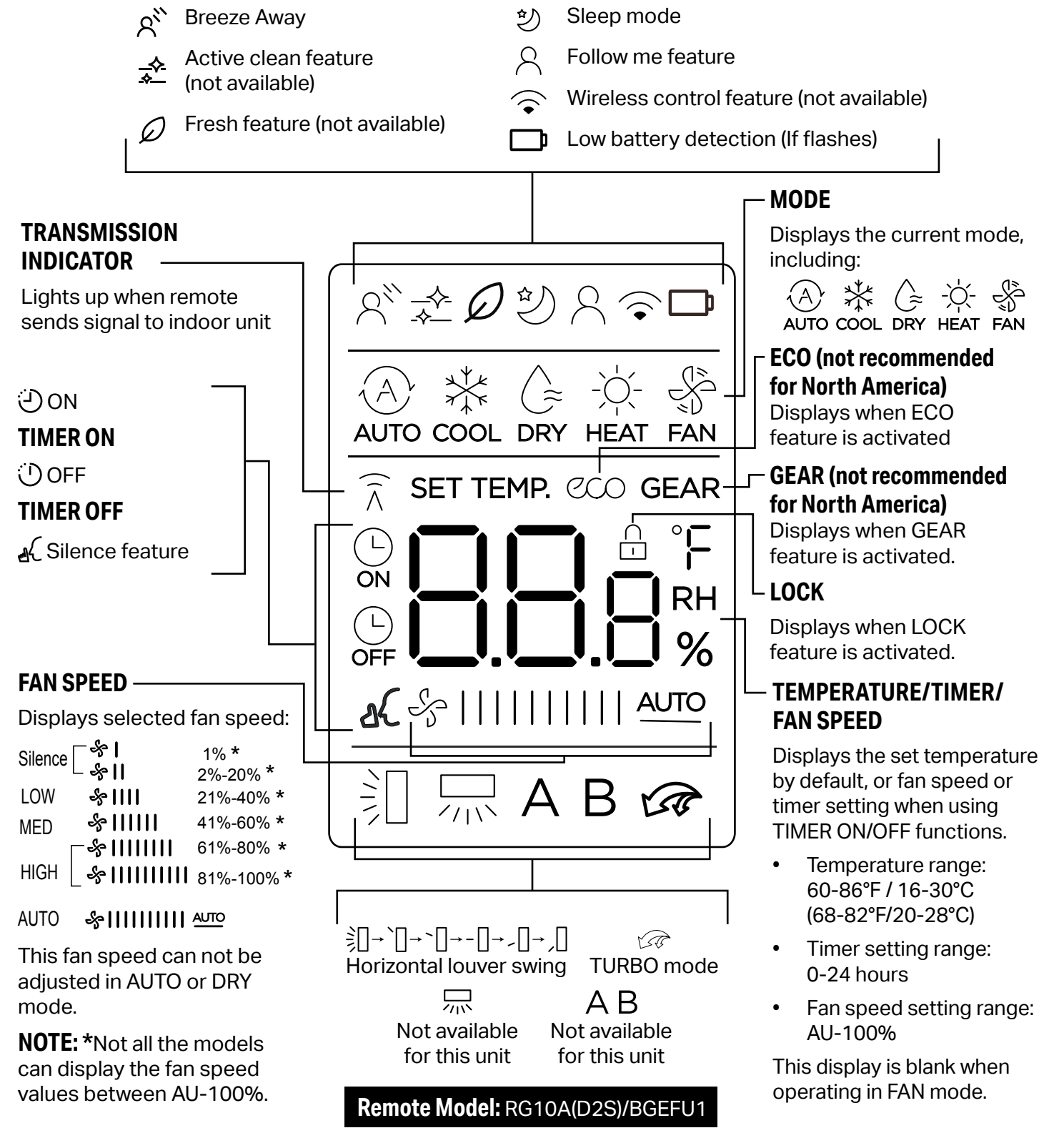


**Remote Model: RG10A(D2S)/BGEFU1**

**COMPATIBLE WITH THE FOLLOWING INDOOR UNIT MODEL: 3PAMSCH24**

# REMOTE SCREEN INDICATORS RG10A(D2S)/BGEFU1

Information are displayed when the remote controller is power up.



**COMPATIBLE WITH THE FOLLOWING INDOOR UNIT MODEL: 3PAMSCH24**

**NOTE:** All indicators shown in the figure are for the purpose of clear presentation. But during the actual operation, only the relative function signs are shown on the display window.



# HOW TO USE BASIC FUNCTIONS

## ⚠ ATTENTION:

Before operation, please ensure the unit is connected to a main source of electricity and power is available.

## SETTING TEMPERATURE

The operating temperature range for units is 62-86°F (17-30°C/20-28°C).

You can increase or decrease the set temperature in 1°F (1°C) increments.

**NOTE:** The operating temperature range for 3PAMSCH24 (RG10A(D2S)/BGEFU1) is 60-86°F (16-30°C)

## HEAT MODE

- 1 Press the **MODE** button to select **HEAT** mode.
- 2 Set your desired temperature using the **TEMP** ^ or **TEMP** v button.
- 3 Press **FAN** button to select the fan speed: AUTO, LOW, MED or HIGH
- 4 Press the **ON/OFF** button to start the unit.

**NOTE:** As outdoor temperature drops, the performance of your unit's HEAT function may be affected. In such instances, we recommend using this air conditioner in conjunction with a main source of heat such as a furnace.

## COOL MODE

- 1 Press the **MODE** button to select **COOL** mode.
- 2 Set your desired temperature using the **TEMP** ^ or **TEMP** v button.
- 3 Press **FAN** button to select the fan speed: AUTO, LOW, MED or HIGH
- 4 Press the **ON/OFF** button to start the unit.

## DRY MODE (DEHUMIDIFYING)

- 1 Press the **MODE** button to select **DRY** mode.
- 2 Set your desired temperature using the **TEMP** ^ or **TEMP** v button.
- 3 Press the **ON/OFF** button to start the unit.

**NOTE:** FAN SPEED can't be changed in DRY mode.

## AUTO MODE

In AUTO mode, the unit will automatically select the COOL, FAN, or HEAT operation based on the set temperature.

- 1 Press the **MODE** button to select **AUTO**.
- 2 Set your desired temperature using the **TEMP** ^ or **TEMP** v button.
- 3 Press the **ON/OFF** button to start the unit.

**NOTE:** FAN SPEED can't be set in AUTO mode.

## FAN MODE

- 1 Press the **MODE** button to select **FAN** mode.
- 2 Press **FAN** button to select the fan speed: AUTO, LOW, MED or HIGH.
- 3 Press the **ON/OFF** button to start the unit.

**NOTE:** You can't set temperature in FAN mode. As a result, your remote control's LCD screen will not display temperature.

# HOW TO USE BASIC FUNCTIONS

(Continued)

## SETTING THE TIMER

The TIMER can be set to turn the system ON at a set time, then turn OFF at a set time within the same 24 hour interval.

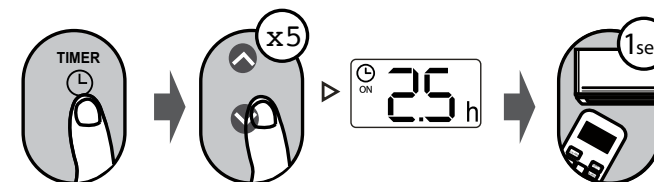
TIMER ON and TIMER OFF functions can also be used independently.

## TIMER ON SETTING

Press TIMER button to initiate the ON time sequence.

Press Temp. up or down button for multiple times to set the desired time to turn on the unit.

Point remote to unit and wait 1sec, the TIMER ON will be activated.

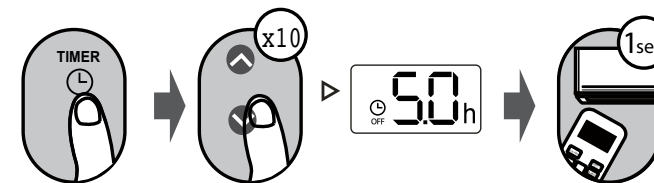


## TIMER OFF SETTING

Press TIMER button to initiate the OFF time sequence.

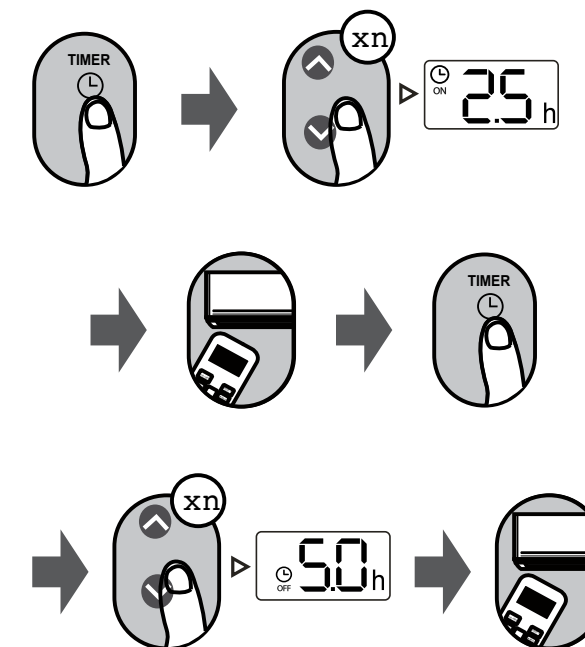
Press Temp. up or down button for multiple times to set the desired time to turn on the unit.

Point remote to unit and wait 1sec, the TIMER OFF will be activated.

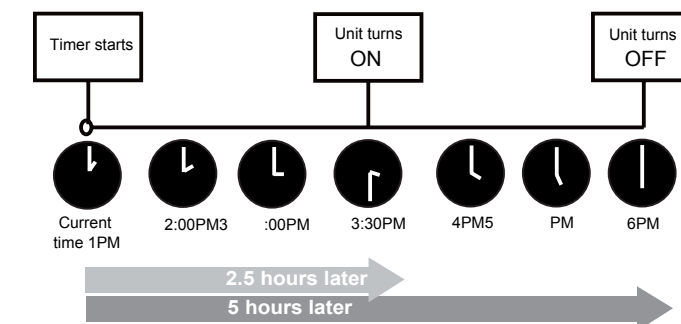


## TIMER ON & OFF SETTING (example)

Keep in mind that the time periods you set for both functions refer to hours after the current time.



*Example: If current timer is 1:00PM, to set the timer as above steps, the unit will turn on 2.5h later (3:30PM) and turn off at 6:00PM.*

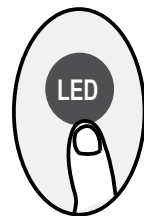


## NOTE:

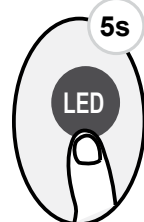
- 1 When setting the TIMER ON or TIMER OFF, the time will increase by 30 minutes increments with each press, up to 10 hours. After 10 hours and up to 24, it will increase in 1 hour increments. (For example, press 5 times to get 2.5h, and press 10 times to get 5h,) The timer will revert to 0.0 after 24.
- 2 Cancel either function by setting its timer to 0.0h.

## HOW TO USE ADVANCED FUNCTIONS

### LED DISPLAY



**PRESS LED BUTTON** to turn on and turn off the display on the indoor unit.



**KEEP PRESSING THIS BUTTON MORE THAN 5 SECONDS**, the indoor unit will display the actual room temperature. Press more than 5 seconds again will revert back to display the setting temperature.

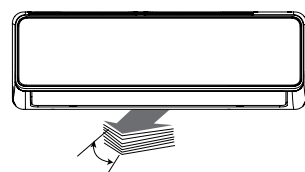
### BREEZE AWAY (🌬️)

MODEL 3PAMSCH24 ONLY

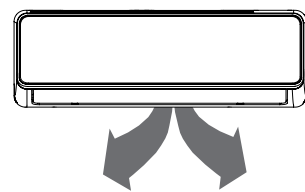
This feature disperses conditioned air evenly throughout the room, instead of one direction.

**NOTE:** This feature is available under Cool, Fan and Dry modes only.

### SWING



The horizontal louver will swing up and down automatically when **PRESSING SWING BUTTON**. Press again to make it stop.



**KEEP PRESSING THIS BUTTON MORE THAN 2 SECONDS**, the vertical louver swing function is activated.

#### 3PAMSCONH12

Swing feature will activate automatic horizontal louvers only.

#### 3PAMSDH09, 3PAMSDH12, 3PAMSDH18, 3PAMSDH24

Swing feature not available.

#### 3PAMSCH12, 3PAMSCH18, 3PAMSCH24

Swing feature will activate automatic horizontal louvers only.

#### 3PAMSFCH18

Swing feature will activate automatic horizontal and vertical louvers.

## HOW TO USE ADVANCED FUNCTIONS

(Continued)

### SHORTCUT

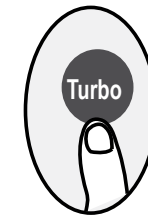
NOT AVAILABLE FOR 3PAMSCH24



**PRESS SHORTCUT BUTTON** when remote control is on, the system will automatically revert back to the previous settings including operating mode, setting temperature, fan speed level and sleep feature (if activated).

**IF PUSHING MORE THAN 2 SECONDS**, the system will automatically restore the current operation settings including operating mode, setting temperature, fan speed level and sleep feature (if activated).

### TURBO



When you **SELECT TURBO FEATURE IN COOL MODE**, the unit will blow cool air with strongest wind setting to jump-start the cooling process.

When you select **TURBO FEATURE IN HEAT** mode, for units with Electric heat elements, the Electric HEATER will activate and jump-start the heating process.

**NOTE:** Turbo screen icon will not show on remote model R10B(D1)/BGEFU1 when selected.

### FP



The unit will operate at high fan speed (while compressor on) with temperature automatically set to 46°F/ 8°C.

Press On/Off, Sleep, Mode, Fan and Temp. button while operating will cancel this function.

### SILENCE



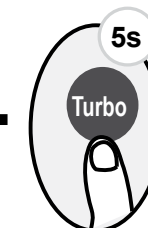
**KEEP PRESSING FAN BUTTON FOR MORE THAN 2 SECONDS** to activate/disable Silence function.

In this mode, system will run on a lower frequency for a much quieter performance. This may result in low efficiency in extreme outdoor temperatures.

Press ON/OFF, Mode, Sleep, Turbo, or Clean button while operating will cancel the Silence function

**NOTE:** Silence mode only available with single zone outdoor unit.

### LOCK



**PRESS TOGETHER CLEAN AND TURBO BUTTON** at the same time more than 5 seconds to activate Lock function. All buttons will not response except pressing these two buttons for two seconds again to disable locking.

**ECO/GEAR Function not recommended in North America.** To save energy, the default set temperature is no lower than 75°F/24°C in cooling mode."

## ECO/GEAR



Press this button to enter the energy efficient mode in a sequence of following:  
 ECO → GEAR(75%) → GEAR(50%) → Previous setting mode → ECO...

MODEL 3PAMSCH24

**NOTE:** This function is only available under COOL mode.

### ECO operation:

Under cooling mode, press this button, the remote control will adjust the temperature automatically to 75°F/24°C, fan speed of Auto to save energy (only when the set temperature is less than 75°F/24°C). If the set temperature is above 75°F/24°C, press the ECO button, the fan speed will change to Auto, the set temperature will remain unchanged.

**NOTE:** Pressing the ECO button, or modifying the mode or adjusting the set temperature to less than 75°F/24°C will stop ECO operation.

Under ECO operation, the set temperature should be 75°F/24°C or above, it may result in insufficient cooling. If you feel uncomfortable, just press the ECO button again to stop it.

### GEAR operation:

Press the ECO/GEAR button to enter the GEAR operation as following:

75% (up to 75% electrical energy consumption)



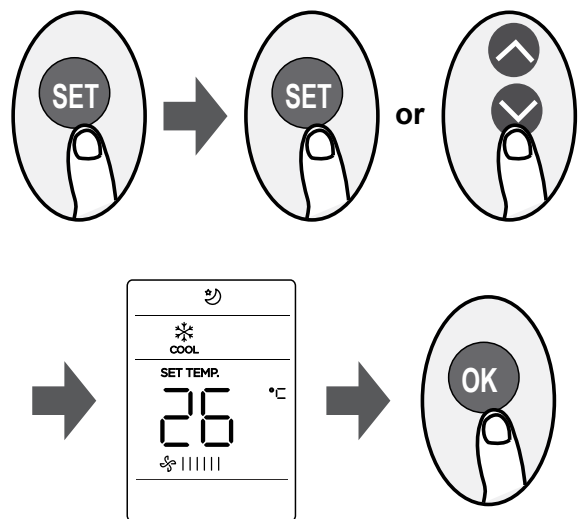
50% (up to 50% electrical energy consumption)



Previous setting mode.

Under GEAR operation, the display on the remote controller will alternate between electrical energy consumption and set temperature.

## SET



**PRESS THE SET BUTTON** to enter the function setting, then press SET button or **TEMP** ^ or **TEMP** v button to select the desired function. The selected symbol will flash on the display area, press the OK button to confirm.

To cancel the selected function, just perform the same procedures as above.

Press the SET button to scroll through operation functions as follows:

Fresh(🍃) → Sleep(🌙) → Follow Me(👤) → AP mode(📶)

## FOLLOW ME (👤):

The **FOLLOW ME FUNCTION** enables the remote control to measure the temperature at its current location and send this signal to the air conditioner every 3 minutes interval.

**NOTE:** Remote be within a 24 ft./8 m unblocked signal receiving range to communicate with indoor head.

**NOTE:** Follow Me function works best if the remote control is placed on the opposite side of the room as the indoor unit and out of direct air flow.

When using AUTO, COOL or HEAT modes, measuring ambient temperature from the remote control (instead of from the indoor unit itself) will enable the air conditioner to optimize the temperature around you and ensure maximum comfort.

**NOTE:** Press and hold Turbo button for seven seconds to start/stop memory feature of Follow Me function.

- If the memory feature is activated, **"ON"** displays for 3 seconds on the screen.
- If the memory feature is stopped, **"OFF"** displays for 3 seconds on the screen.
- While the memory feature is activated, press the ON/OFF button, shift the mode or power failure will not cancel the Follow me function.

## SLEEP (🌙)

**THE SLEEP FUNCTION** is used to decrease energy use while you sleep (and don't need the same temperature settings to stay comfortable). This function can only be activated via remote control. For the detail, see "sleep operation" in "USER'S MANUAL".

**NOTE:** The SLEEP function is not available in FAN or DRY mode.

## CLEAN



Airborne bacteria can grow in the moisture that condenses around heat exchanger in the unit. With regular use, most of this moisture is evaporated from the unit. By **PRESSING THE CLEAN BUTTON**, your

unit will clean itself automatically. After cleaning, the unit will turn off automatically. Pressing the CLEAN button mid-cycle will cancel the operation and turn off the unit. You can use CLEAN as often as you like.

**NOTE:** You can only activate this function in COOL or DRY mode.





5401 Dansher Road  
Countryside, IL 60525

844-4PA-AIRE | 844-472-2473 | [support@perfectaire.us](mailto:support@perfectaire.us)  
CANADA SUPPORT 877-997-2473 | [supportcanada@perfectaire.us](mailto:supportcanada@perfectaire.us)

[www.perfectaire.us](http://www.perfectaire.us)