

REZNOR®

Electric Solutions



**Commercial, Industrial,
and Residential Comfort**



ELECTRIC UNIT HEATERS

EUHC Compact Heater

Flexible and efficient performance in a compact, low-clearance heater with fan-only mode

- Electric resistive, low-static axial fan unit heater
- Low clearance requirements - ideal for tight spaces
- 8 sizes (2 to 20 kW)
- Vertical, horizontal mounting, or every 15° in between
- Swiveling allows complex angles to direct heat
- Multi-voltage/phase capable models
- Standard 24V control for low-voltage thermostats
- For indoor shipping docks, garages, power stations, mechanical/maintenance rooms
- ETL certified to UL Standard 2021 and CSA C22.2 #46 for use in the US and Canada



EUH Heater

Efficient option for a wide variety of commercial and industrial applications

- Electric resistive, low-static axial fan heater
- 8 sizes (3 to 30 kW)
- Multi-voltage/phase capable models
- Multi-unit controls options
- Multiple mounting options
- Standard two-point suspension and wall hanger
- High-temperature limit control with automatic reset and air-proving switch protection
- For indoor entryways, stairwells, hallways; also for heat/freeze protection
- ETL certified to UL Standard 2021, Fixed and Location-Dedicated Electric Room Heaters



EGW Economical Heater

Reliable spot heating and freeze protection with compact, wall- or ceiling-mountable unit for small, commercial spaces

- 3 sizes (heating capacity of 1,500 to 5,000 watts)
- Voltage/phase options: 240/208V/1
- Wall- or ceiling brackets allow 360° rotation
- 20-gauge steel cabinet
- Adjustable louvers control airflow
- High-limit temperature control with automatic reset
- Helical coil nickel-chromium alloy wire heating element
- Unit-mounted thermostat
- For workshops, garages and other small areas requiring heat for comfort or freeze protection
- Almond epoxy/polyester powder paint finish



EGHB Heavy-Duty Heater

Durable, discreet heating with compact baseboard unit for modern commercial and residential spaces

- 3 sizes (heating capacity of 40 to 60 kW)
- Almond epoxy/polyester powder paint finish
- Voltage/phase options: 480V/3 and 600V/3
- 18 and 20-gauge steel
- Adjustable louvers direct airflow
- High-limit temperature control with automatic reset
- Thermally-protected, totally-enclosed, factory-lubricated fan motor
- Durable tubular finned heating elements with concentric disposition
- Large, easily-accessible control compartment
- Factory-installed contactor
- Standard 240V control circuit
- For areas requiring a high level of air flow such as mines, commercial halls, stairwells, factories, warehouses or other high-bay installations



SPECIALTY ELECTRIC PRODUCTS

DTH Docked Trailer Heater

Warms the inside of docked trailers quickly and includes a fan-only mode

- Available in sizes 18 or 30 (13kW, 18kW, 30kW)
- Durable, weather-resistant galvanized steel cabinet
- Impact-resistant flexible chute
- Voltage options: 208/3, 240/3, 480/3, 600/3
- Mounting kit provided
- Field-built mounting hardware for quick, easy connection
- Wall-mounted control panel with push-button operation
- Low-noise, vibration-isolated fan motor
- Airflow proving switch and automatic reset high-temperature limit switch
- For commercial and industrial loading docks



EWHB Wash Down Heater

For high humidity, wet, washdown areas or environments where heating units require flushing with water in the course of non-hazardous activities

- 9 sizes (heating capacity of 3 to 38 kW)
- Voltage/phase options: 208/1, 208/3, 240/1, 240/3, 480/3, and 600/3
- 16-gauge, stainless-steel, moisture and corrosion resistant housing
- Stainless-steel swivel mounting bracket for wall- or ceiling-mounting
- NEMA 4X non-metallic electrical enclosure
- Stainless-steel grille helps prevent accidental contact with fan blade
- Adjustable, stainless-steel outlet louvers
- High-limit temperature control with automatic reset



EXUB Explosion-Resistant Heater

Maximum durability and heat performance for hazardous, heavy-duty environments

- Highest average air temperature rise across our complete kW range
- 9 sizes (heating capacity of 3 to 35 kW)
- Voltage/phase options: 208/1, 208/3, 240/1, 240/3, 480/3, and 600/3
- Provides primary or supplementary heat for comfort or freeze protection in classified, hazardous locations
- Cast aluminum control and element enclosure lids NEMA Type 7 and 9
- Anodized-aluminum adjustable louvers
- Explosion-resistant, thermally-protected, permanently-lubricated ball bearing fan motor
- Red epoxy/polyester powder paint
- Heavy-duty fan guard with horizontal stiffening wires



H-Series Forced-Air Destratification Fan

Reduce heat build-up at ceiling and prevent hot or cold spots on ground by adding circulation

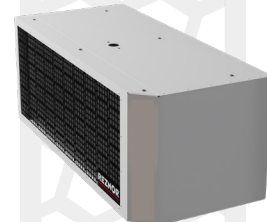
- 4 sizes based on maximum mounting height of 25 to 60 feet
- Distributes existing space heat to occupant level
- Reduces heat load and improves building energy efficiency
- Optimizes building efficiency when integrated with unit heater controls
- Provides cooling air movement during warm weather
- Directs air with hanging brackets and integrated louvers
- Energy-saving axial fan motor
- Close mesh fan guard
- External terminal strip for quick connection
- Lightweight, easy to install
- For installations with narrow aisles, spaces with lighting or hanging signage, and smaller spaces



HAC and HACE Air Curtains

Air barrier solution to prevent cold or warm air from entering a climate-controlled environment

- Choice of unheated (HAC) or electric heat coils (HACE) models
- 13 sizes (one, two, three, or four doors and door widths from 36 to 168 inches)
- Exclusive positive seal nozzle design
- Double inlet design galvanized forward-curved centrifugal type blower with zinc-plated hubs
- Direct-drive open drip-proof 3/4-HP 1,630-RPM blower motor with integral thermal-overload protection and heavy-duty permanently-lubricated ball bearings
- High-efficiency discharge plenum fills width and height of opening and lowers operational sound level
- For retail, grocery, warehouses, factories, office entryways, vestibule replacement, doors between heated/unheated or cooled/uncooled sections of a building



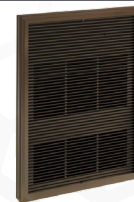
REZNOR® WALL-MOUNTED, CEILING-MOUNTED AND BASEBOARD ELECTRIC HEATERS

EHA Architectural Wall Heater

Wall-mounted solution for draft-prone, high-traffic commercial spaces

- 5 sizes based on heating capacity of 1.4 to 4.8 kW
- Voltage/phase options: 120/1, 208/1, 240/1, 277/1, and 480/1
- White or almond epoxy/polyester powder paint finish
- Extruded aluminum grill, 1/8-inch thickness
- Bottom air outlet
- High-temperature limit control with automatic reset

- Factory-lubricated closed fan motor
- Durable tubular heating element with fins
- Up to three units may be mounted side-by-side
- Built-in tamper-proof thermostat or control relay
- For indoor commercial and residential spaces



EHC Commercial Wall Heater

Provides quick bursts of heat in cold zones in a compact, wall-mounted unit that supports recessed or surface installation

- 8 sizes based on heating capacity of 1.5 to 12 kW
- Voltage/phase options: 120/1, 208/1, 208/3, 240/1, 240/3, 277/1, 347/1, 480/1, 480/3, 600/1, and 600V/3
- White or almond epoxy/polyester powder paint finish
- 18-gauge steel front cover
- Bottom air outlet

- High-temperature limit control with automatic reset
- Factory-lubricated closed fan motor
- Durable tubular heating element with fins
- Up to three units may be mounted side-by-side
- Thermostat with control knob



EHL Residential High Efficiency Wall Heater

Quiet, compact wall heater that delivers warm air where needed for residential spaces

- 3 sizes based on heating capacity of 1.0 to 2.0 kW
- Voltage/phase options: 120V/1 and 240/1
- White or almond epoxy/polyester powder paint finish
- 20-gauge steel cabinet with 22-gauge steel front cover
- Four mounting positions for top, bottom, left or right air outlet
- Mounting holes for quick recess-mounting

- High-temperature limit control with automatic reset
- Quietly-operating factory-lubricated closed fan motor
- Large wiring compartment for easy connections
- Durable tubular heating element with fins
- Built-in tamper-proof thermostat
- Compact, multi-purpose heater for areas with limited space



EMC Cabinet Wall Heater

Powerful cabinet heater that adapts to nearly any installation need - floor, wall, ceiling, or recessed

- 12 sizes based on heating capacity of 1.3 to 24 kW
- Voltage/phase options: 208/1, 208/3, 240/1, 240/3, 277/1, 347/1, 480/1, 480/3, 600/1, and 600/3
- White or almond epoxy/polyester powder paint finish
- 18-gauge steel cabinet
- Extruded aluminum bar grilles
- Field changeable air inlet and outlet
- Optional fresh air inlet damper and air filters

- Direct-drive, variable-speed fan with fan delay and 240/208V 1/15-HP factory-lubricated motor
- Durable tubular heating element with fins
- Multi-position mounting: surface, semi-recessed, or recessed
- Sub-base and special back plate available
- Standard 240V control circuit
- High-temperature limit control with automatic reset



ECR and ECS Ceiling-Mounted Models Feature

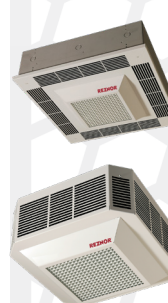
Discreet, efficient heating that circulates trapped air with a ceiling-recessed unit that blends seamlessly into spaces

- Voltage/phase options: 208/1, 208/3, 240/1, 240/3, 277/1, 347/1, 480/1, 480/3, 600/1, and 600/3
- White or almond epoxy/polyester powder paint finish
- Flat ribbon-wire outlet grill
- Totally-enclosed lifetime-lubricated ball bearing fan motor
- Three stainless-steel tubular heating elements with aluminum fins
- High-temperature limit control with automatic reset
- Line voltage control
- Built-in 240V contactor for unit sizes 5, 7, and 10, all 347V, 480V, and 600V units, and all 3-phase units

- Continuous circulation controlled by optional built-in switch with POWER ON indicator
- For indoor commercial and industrial spaces

ECR Recess-Mounted: 4 sizes based on heating capacity of 2 to 5 kW

ECS Flush-Mounted: 6 sizes based on heating capacity of 2 to 10 kW



ECR

ECS

EBHB Heavy-Duty Baseboard Heater

Compact baseboard unit designed for modern commercial and residential spaces

- 10 sizes based on heating capacity of 0.3 to 2.5 kW
- Voltage/phase options: 120/1, 208/1 and 240/1
- White semi-gloss epoxy/polyester powder coat paint finish
- Residential capable
- Robust 22-gauge body with rounded upper corners
- Sturdy 20-gauge front panel with design embossed lines and connection box at both ends
- Welded 20-gauge junction box to back wrap, easy rear access wiring panel
- Small height and slim depth for economy of space

- Easy installation directly on floor (no disassembly required)
- Quietly-operating factory-lubricated fan motor
- Raceway and side knock-outs for baseboard interconnections
- Stainless-steel tubular heating element
- Aluminum diamond-shaped heating element fins positioned for maximized heat transfer
- High-temperature limit control with automatic reset



Call your Reznor® Rep at 800.695.1901 or visit reznorhvac.com for more information on the Reznor® product line.