

SLZ-AF12NL & SUZ-AA12NL
12,000 BTU/H CEILING CASSETTE INDOOR UNIT
12,000 BTU/H HEAT PUMP OUTDOOR UNIT



Job Name:

System Reference:

Date:



Indoor Unit.....SLZ-AF12NL

Outdoor Unit.....SUZ-AA12NL



INDOOR UNIT FEATURES

- Built-in drain condensate lift mechanism (lifts to 33")
- Ceiling-recessed cassette : Ceiling-recessed cassette (24"x24")
- Fresh air intake: Fresh air intake provided in the main body
- Individual vane control
- Install Konnect Series: Install Konnect Series in a drywalled ceiling (with an access panel for servicing) or in a 2'x2' drop ceiling
- Light commercial: Units with this icon are suitable for light commercial applications such as small offices, restaurants, and retail.
- Long-life air filter included
- Multi-zone: A multi-zone unit provides the temperature management of multiple zones within a building.
- Multiple control options, including the comfort app for remote access, third-party interfaces, and both wired and wireless controllers
- Optional 3D i-see Sensor®: The advanced sensor scans each room to produce a complete thermal profile that includes heat signatures based upon size, temperature and movement, then adjusts temperature and airflow based on user preference, and saves energy according to room occupancy.
- Powerful Mode: Temporarily drops or raises the set point and fan speed in order to quickly bring the room to the desired temperature.
- Up and down swing-mode: An indoor unit with this capability can move air up and down throughout the room like an oscillating fan using the horizontal vanes.
- Wide airflow pattern: Wide airflow pattern for excellent air distribution

OUTDOOR UNIT FEATURES

- Blue Fin Coating: An anti-corrosion treatment applied to the aluminum fins of the heat exchanger of the outdoor unit to protect against corrosion caused by salt, sulfur, and other airborne contaminants, especially in coastal and industrial areas.
- High-performance grooved piping : High-performance grooved piping for increased heat exchange efficiency
- Hot-Start Technology: Hot-Start Technology ensures the fan only activates once the heat exchanger is warm, preventing cold air blasts during start-up.
- INVERTER-driven compressor: An inverter-driven compressor generates the precise capacity needed to maintain a temperature set point.
- Joint Lap DC Motor: Innovative Joint Lap DC Motor leads to high efficiency and reliability
- Outdoor unit directed power: The outdoor unit powers the indoor unit, and should a power outage occur, the system is automatically restarted when power returns
- Pulse Amplitude Modulation technology: Pulse Amplitude Modulation technology enhances energy efficiency by adjusting the power supply to optimize compressor performance, ensuring precise capacity control and reduced energy consumption.
- Quiet operation: Quiet operation units are as quiet as a typical conversation, and most indoor units are whisper quiet.
- Single-zone: One outdoor unit connects to one indoor unit to control the comfort in a single space.

SPECIFICATIONS: SLZ-AF12NL & SUZ-AA12NL

Cooling at 95F ¹	Maximum Capacity	Btu/h	12,000
	Rated Capacity	Btu/h	12,000
	Minimum Capacity	Btu/h	3,000
	Maximum Power Input	W	960
	Rated Power Input	W	960
	Moisture Removal	Pints/h	1.8
	Sensible Heat Factor	-	0.84
Heating at 47F ²	Power Factor [208V / 230V]	%	98 / 98
	Maximum Capacity	Btu/h	15,000
	Rated Capacity	Btu/h	15,000
	Minimum Capacity	Btu/h	4,900
	Maximum Power Input	W	1,370
	Rated Power Input	W	1,370
	Power Factor [208V / 230V]	%	95 / 95
Heating at 17F ³	Maximum Capacity	Btu/h	9,800
	Rated Capacity	Btu/h	9,800
	Maximum Power Input	W	1,370
	Rated Power Input	W	1,370
Heating at 5F ⁴	Maximum Capacity	Btu/h	7,900
	Maximum Power Input	W	1,010
Heating at -4F ⁵	Maximum Capacity	Btu/h	6,600
Efficiency	SEER2		20.3
	EER2 ¹		12.5
	HSPF2 [IV]		9.7
	COP at 47°F ²		3.2
	COP at 17°F at Maximum Capacity ³		2.6
	COP at 5°F at Maximum Capacity ⁴		2.3
	COP at -4°F at Maximum Capacity ⁵		2.05
Electrical	ENERGY STAR® Certified		Yes
	Voltage, Phase, Frequency	V AC / V AC, , Hz	208 / 230, 1, 60
	Guaranteed Voltage Range	V AC	198 - 253
	Voltage: Indoor - Outdoor, S1-S2	V AC	208/230
	Voltage: Indoor - Outdoor, S2-S3	V DC	12-24
	Short-circuit Current Rating [SCCR]	kA	5
	Recommended Fuse/Breaker Size (Outdoor)	A	15
Indoor Unit	Recommended Wire Size [Indoor - Outdoor]	AWG	14
	Fan Motor Output	W	50
	Airflow Rate at Cooling, Dry	CFM	230, 280, 335
	Airflow Rate at Heating, Dry	CFM	230, 280, 335
	Sound Pressure Level [Heating]	dB (A)	25, 30, 34
	Dual Barrier Coating on Heat Exchanger		No
	External Finish Color		1.0Y 9.2/0.2
	Unit Dimensions (W x D x H)	inch x inch x inch [mm x mm x mm]	22-7/16 x 22-7/16 x 8-3/16 [570 x 570 x 208]
	Package Dimensions (W x D x H)	inch x inch x inch [mm x mm x mm]	28 x 24-13/32 x 9-29/64 [710 x 620 x 240]
	Unit Weight	lbs [kg]	31 [14]
	Package Weight	lbs [kg]	36 [16.50]
	Fan Motor Type		DC Motor
IDU Operating Temp. Range	Cooling Intake Air Temp [Maximum / Minimum]	°FDB, °FWB / °FDB, °FWB	90, 75 / 66, 59
	Heating Intake Air Temp [Maximum / Minimum]	°FDB	80 / 59

NOTES

¹Cooling at 95°F (Indoor: 80°F DB, 67°F WB // Outdoor: 95°F DB, 75°F WB)

²Heating at 47°F (Indoor: 70°F DB, 60°F WB // Outdoor: 47°F DB, 43°F WB)

³Heating at 17°F (Indoor: 70°F DB, 60°F WB // Outdoor: 17°F DB, 15°F WB)

⁴Heating at 5°F (Indoor: 70°F DB, 60°F WB // Outdoor: 5°F DB, 4°F WB)

⁵Heating at -4°F (Indoor: 70°F DB, 60°F WB // Outdoor: -4°F DB, -5°F WB)

* Indoor/Outdoor Unit Operating Temperature Range (Cooling Air Temp [Maximum / Minimum]):

• Applications should be restricted to comfort cooling only; equipment cooling applications are not recommended for low ambient temperature conditions.

** Outdoor Unit Operating Temperature Range (Cooling Thermal Lock-out / Re-start Temperatures; Heating Thermal Lock-out / Re-start Temperatures):

• System cuts out in heating mode and automatically restarts at these temperatures.

SPECIFICATIONS: SLZ-AF12NL & SUZ-AA12NL

Outdoor Unit	MCA	A	14
	MOCP	A	23
	Fan Motor Output	W	55
	Airflow Rate Cooling	CFM	1,229
	Airflow Rate Heating	CFM	1,172
	Defrost Method		Reverse Cycle
	Coating on Heat Exchanger (Bluefin, Sea Coast)		Yes, Yes
	Sound Pressure Level, Cooling ¹	dB (A)	49
	Sound Pressure Level, Heating ²	dB (A)	51
	Compressor Type		Twin Rotary
	Compressor Model		SRB092FQFMC
	Compressor Oil [Type // Charge]	Type // oz	RM68EH // 11.8
	External Finish Color		Munsell No.3Y 7.8/1.1
	Base Pan Heater		Optional
	Unit Dimensions (W x D x H)	inch x inch x inch [mm x mm x mm]	31-8/16 x 11-4/16 x 21-11/16 [800 x 285 x 550]
	Package Dimensions (W x D x H)	inch x inch x inch [mm x mm x mm]	37-1/64 x 15 x 24-51/64 [940 x 380 x 630]
	Unit Weight	lbs [kg]	81 [37]
	Package Weight	lbs [kg]	88.18 [40]
ODU Operating Temp. Range	Cooling Intake Maximum Air Temp [Maximum / Minimum*]	°FDB	115 / 14
	Cooling Thermal Lock-out / Re-start Temperatures**	°FDB	-1 / 3
	Heating Air Temp [Maximum / Minimum]	°FDB, °FWB / °FDB, °FWB	75, 65 / -4, -5
	Heating Thermal Lock-out / Re-start Temperatures**	°FDB	-14 / -4
Refrigerant	Type		R454B
	Pre-Charged Refrigerant Amount	lbs	2
	Maximum Pre-Charged Piping Length	ft [m]	65 [20]
	Additional Refrigerant Charge Per Additional Piping Length	oz/ft	0
Piping	Gas Pipe Size O.D. [Flared]	inch [mm]	3/8 [9.52]
	Liquid Pipe Size O.D. [Flared]	inch [mm]	1/4 [6.35]
	Maximum Piping Length	ft [m]	65 [20]
	Maximum Height Difference	ft [m]	40 [12]
	Maximum Number of Bends		10

NOTES

¹Cooling at 95°F (Indoor: 80°F DB, 67°F WB // Outdoor: 95°F DB, 75°F WB)

²Heating at 47°F (Indoor: 70°F DB, 60°F WB // Outdoor: 47°F DB, 43°F WB)

³Heating at 17°F (Indoor: 70°F DB, 60°F WB // Outdoor: 17°F DB, 15°F WB)

⁴Heating at 5°F (Indoor: 70°F DB, 60°F WB // Outdoor: 5°F DB, 4°F WB)

⁵Heating at -4°F (Indoor: 70°F DB, 60°F WB // Outdoor: -4°F DB, -5°F WB)

* Indoor/Outdoor Unit Operating Temperature Range (Cooling Air Temp [Maximum / Minimum]):

• Applications should be restricted to comfort cooling only; equipment cooling applications are not recommended for low ambient temperature conditions.

** Outdoor Unit Operating Temperature Range (Cooling Thermal Lock-out / Re-start Temperatures; Heating Thermal Lock-out / Re-start Temperatures):

• System cuts out in heating mode and automatically restarts at these temperatures.

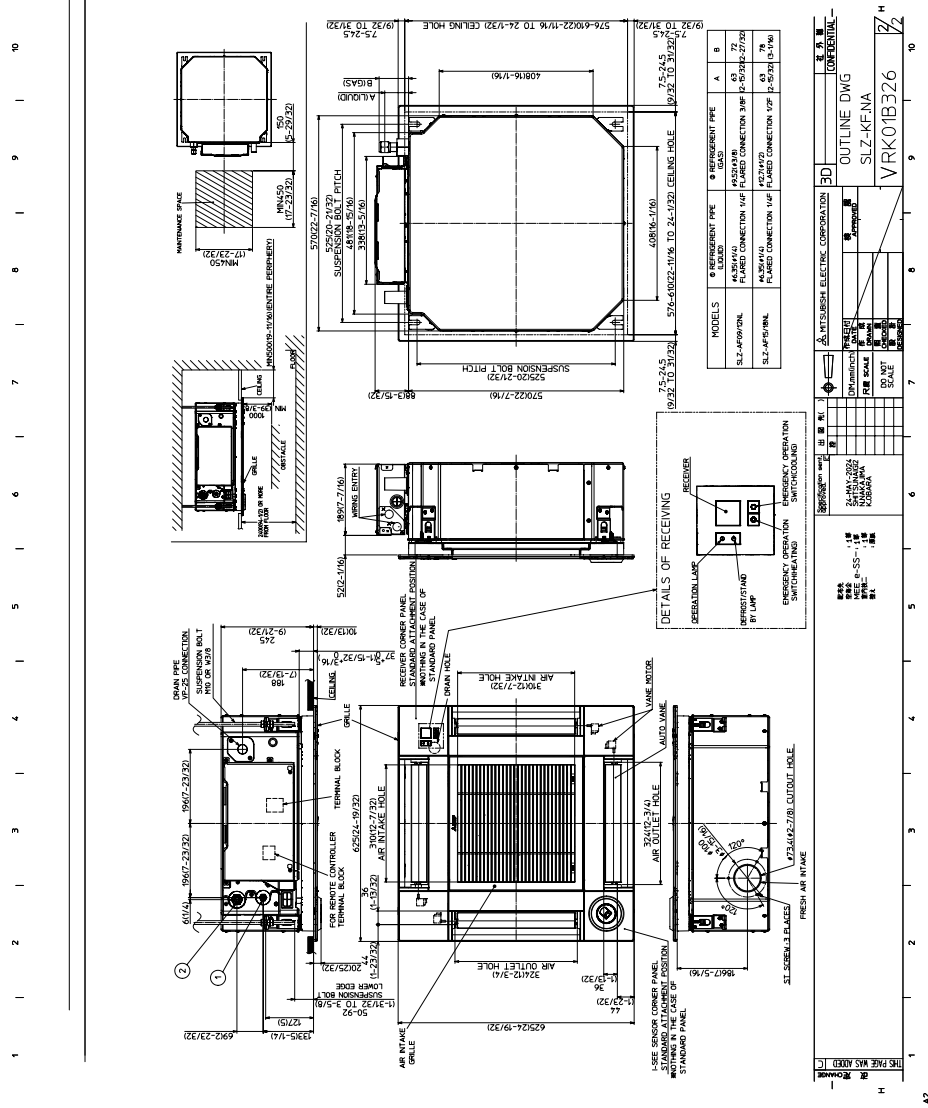
INDOOR UNIT ACCESSORIES: SLZ-AF12NL

Condensate	Blue Diamond Advanced Mini Condensate Pump w Reservoir Sensor 208230V recommended	X87-721
	Blue Diamond MaxiBlue Advanced Mini Condensate Pump w Reservoir Sensor 110V up to 48000 BTUH recommended	X87-711
	Blue Diamond MegaBlue Advanced Condensate Pump w Reservoir Sensor	X87-835
	Blue Diamond MicroBlue Mini Condensate Pump 110208230V up to 18000 BTUH	X86-003
	Blue Diamond Sensor Extension Cable 15 Ft	C13-103
	Refco Condensate Pump 100-240 VAC up to 120000 BTUH	COMBI
	Sauermann Condensate Pump	SI30-230
Control Interface	Airzone Wired Blueface Controller Black	AZZBSBLUEZEROCN
	Airzone Wired Blueface Controller White	AZZBSBLUEZEROCB
	Airzone Wireless Lite Controller Black	AZZBSLITERN
	Airzone Wireless Lite Controller White	AZZBSLITERB
	Airzone Wireless Think Controller Black	AZZBSTHINKRN
	Airzone Wireless Think Controller White	AZZBSTHINKRB
	IT Extender for kumo station	PAC-WHS01IE-E
	kumo station for the Comfort app	PAC-WHS01HC-E
	Operation and Error Status Output Adapter ¹	PAC-SF40RM-E
	Procon BACnet and Modbus Interface	PAC-UKPRC001-CN-1
	Thermostat Interface for 3rd Party Thermostats	PAC-US445CN-1
	Wireless Interface Adapter for the Comfort app	PAC-USWHS002-WF-2
Wired Remote Controller	Deluxe Wired MA Remote Controller ¹	PAR-42MAAUB
	Simple Direct Wired Remote Controller	PAC-SDW01RC-1
	Simple MA Remote Controller ¹	PAC-YT53CRAU-J
	Touch MA Wired Remote Controller ¹	PAR-CT01MAU-SB
Remote Sensor	Flush Mount Remote Temperature Sensor for SEZ SLZ SVZ and all P-Series models	PAC-USSEN002-FM-1
	Wall Mount Remote Temperature Sensor	PAC-SE41TS-E
	Wireless temperature and humidity sensor for the Comfort app	PAC-USWHS003-TH-1
Lineset	15 x 1/4 x 15 3/8 Lineset Twin-Tube Insulation	MLS143812T-15
	30 x 1/4 x 30 3/8 Lineset Twin-Tube Insulation	MLS143812T-30
	50 x 1/4 x 50 3/8 Lineset Twin-Tube Insulation	MLS143812T-50
	65 x 1/4 x 65 3/8 Lineset Twin-Tube Insulation	MLS143812T-65
Wireless Remote Controller	Lockdown Bracket for Wireless Handheld Remote Controllers	RCMKP1CB
	RedLINK Wireless Remote Controller	MHK2
	Universal Wireless MA Handheld Remote Controller	PAR-FL32MA-E
	Universal Wireless Receiver for PAR-FL32MA-E	PAR-FA32MA-W
	Wireless Handheld Remote Controller for SLZ PLA and PLFY models	PAR-SL101A-E
	Wireless Receiver for PAR-SL101A-E on PLA-NL and PLFY-ELNEMU models	PAR-SR4LU-E
	Wireless Signal Receiver for PAR-SL101A-E on SLZ-AF and PLFY-NFMU models	PAR-SF9FA-E
Disconnect Switch	30A600VUL fits 2 X 4 utility box - Black	TAZ-MS303
	30A600VUL fits 2 X 4 utility box - White	TAZ-MS303W
Grille	Grille (required)	SLP-18FAU
i-see Sensor® Panel	3D i-See Sensor Grille	SLP-18FAEU
Power Supplies & Auxiliary Components	3-Pin Wiring Harness	PAC-715AD
	5-Pin Wiring Harness	PAC-725AD
Power Supplies and Auxiliary Components	Backup Heat Relay Kit Adapter for CN24 or CN152 Connector	CN24RELAY-KIT-CM3
NOTES		
¹ Unable to use with Wireless Remote Controller		

OUTDOOR UNIT ACCESSORIES: SUZ-AA12NL

Hail Guards	Hail Guard	HG-B4
Mounting Pad	Condensing Unit Mounting Pad 16 x 36 x 3	ULTRILITE1
Stand	18 Single Fan Stand	QSMS1801M
	24 Single Fan Stand	QSMS2401M
	Condenser Wall Bracket	QSWB2000M-1
	Condenser Wall Bracket - Stainless Steel Finish	QSWBSS
	Outdoor Unit 3-14 inch Mounting Base Pair - Plastic	DSD-400P
	Outdoor Unit Stand 12 High	QSMS1201M
Port Adaptor	Adaptor 12 x 38	PAC-SK88RJ-E
Optional Defrost Heater	Base Heater	MAC-640BH-U1
Mini-Split Wire	14 Gauge 4 wire Armored MiniSplit Cable250 ft roll	SW144-250
	14 Gauge 4 wire Armored MiniSplit Cable50 ft roll	SW144-50
	14 Gauge 4 wire MiniSplit Cable250 ft roll	S144-250
	14 Gauge 4 wire MiniSplit Cable50 ft roll	S144-50
Drain Socket	Drain Socket	MAC-871DS
Snow/Rain Diverter	SnowRain Diverter	SRD-1
Air Outlet Guide	Air Outlet Guide	MAC-881SG-E
Control/Service Tool	M- & P-Series Maintenance Tool Cable Set	M21EC0397
	Maintenance Tool Interface	PAC-USCMS-MN-1
Centralized Drain Pan	Centralized Drain Pan	PAC-SG63DP-E
Muffler	Muffler for Connection to SLZ	MAC-001MF-E
NOTES		

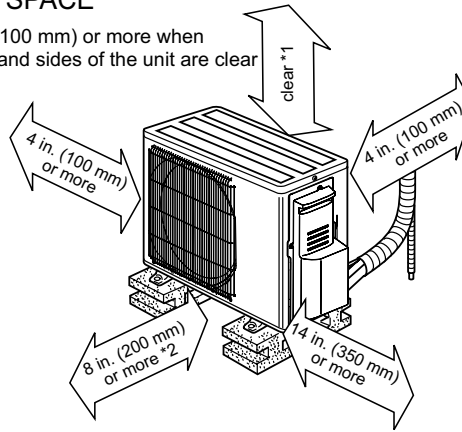
© 2025 Mitsubishi Electric Trane HVAC US LLC. All rights reserved.



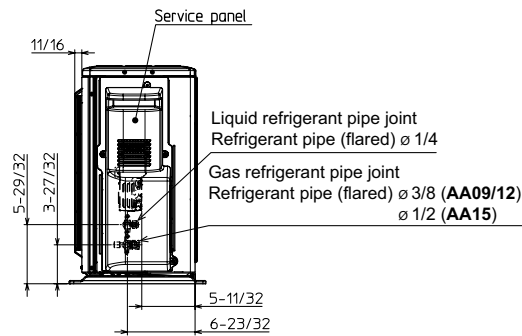
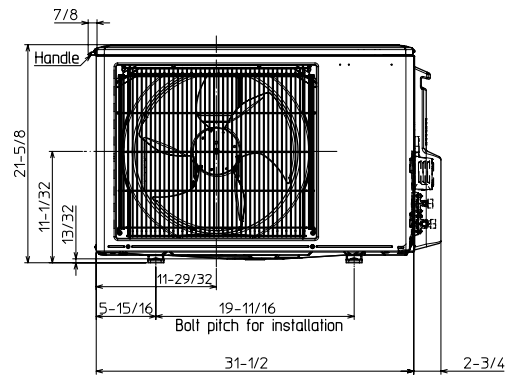
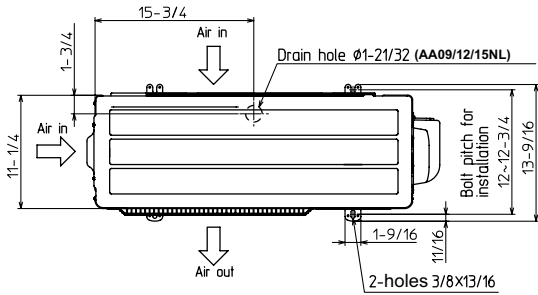
OUTDOOR UNIT DIMENSIONS: SUZ-AA12NL

REQUIRED SPACE

*1 4 in. (100 mm) or more when front and sides of the unit are clear



*2 When any 2 sides of left, right and rear of the unit are clear



Drain hole ϕ 1-5/16 (KA09/12/15NAH)

METUS_2025-02_PROPIN

1340 Satellite Boulevard Suwanee, GA 30024
Toll Free: 800-433-4822 <https://mitsubishicomfort.com>

