

DESCRIPTION

VENTS' ERV 120 R are the complete whole house ventilation system designed to bring a continuous supply of fresh air into the house while exhausting an equal amount of stale air. Five year warranty.

CASING

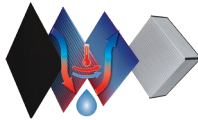
- Steel casing is covered with high-quality multilayer aluminium and zinc alloy to prevent corrosion.
- The casing is equipped with a switch to turn the ventilator off when the service panel is opened.

AIR FILTRATION

- Washable MERV 6 air filters in exhaust and supply air streams.
- Optional supply: anti grease aluminum filter.

ENERGY RECOVERY CORE

Enthalpic core provides both heat&humidity recovery. For enthalpic core no drain required.



FANS

The unit is equipped with supply and exhaust centrifugal fans with forward curved blades and build-in thermal overheating protection with automatic restart. The electric motors and impellers are dynamically balanced.

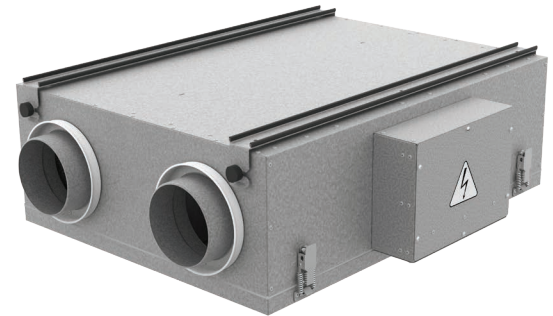
DEFROST SYSTEM

Recirculation or only exhaust defrost modes are available.

CONSTANT FLOW

Frigate ERV 120 R CF has an automatic constant air flow control function to keep the air flow in supply and exhaust air ducts constant even in case of variable air resistance.

This function is provided with the integrated air flow control units. The electronic sensors convert the actual air flow to the analogue signal that is proportional to the air flow in the air duct. These signals are



transmitted to the controller that controls the rotation speed of a respective fan in such a way that the actual rotations speed is equal to the set value.

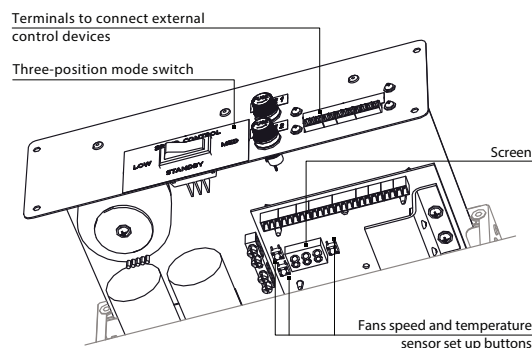
MANUAL BALANCING

Manual balancing is a standard balancing system. Fan speed manually adjusted by operating on units controller (Built-in control panel with independent fan speed adjustment 0%-100%).

CONTROL BOARD

The unit incorporates an integrated control system with following functions:

- Operation mode switch.
- Airflow balancing enabled by supply and exhaust fan independent speed adjustment from 0 to 100% (percentage is displayed on built in screen).
- Automatic recovery core frost protection.
- External control device connection (up to 5 at the same time).

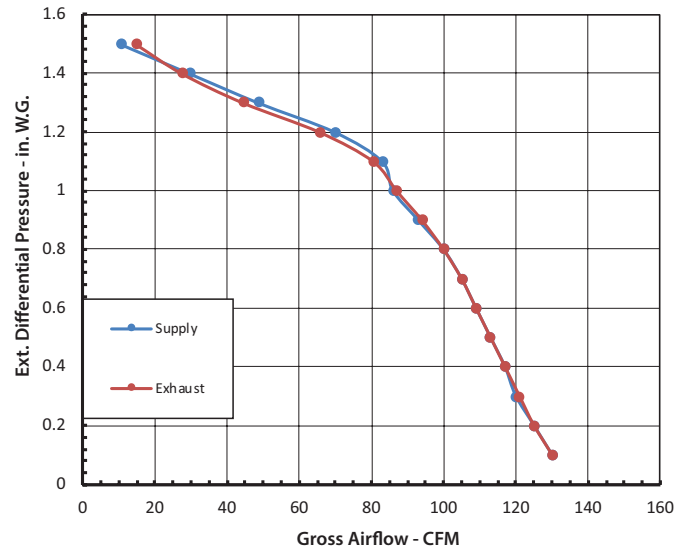


SUITABLE FOR:

Bathroom / kitchen / apartments / cottages / small offices.

PERFORMANCE

EXTERNAL STATIC PRESSURE		NET SUPPLY AIR FLOW		GROSS AIR FLOW				POWER
				SUPPLY		EXHAUST		
Pa	in. W.G.	L/s	CFM	L/s	CFM	L/s	CFM	Watts
25	0,1	64	135	65	138	66	139	143
50	0,2	62	130	63	134	63	133	140
75	0,3	59	126	61	129	60	128	136
100	0,4	57	122	59	125	58	123	133
125	0,5	55	117	57	120	56	118	130
150	0,6	53	113	54	115	53	112	127
175	0,7	51	108	52	110	50	107	125
200	0,8	49	103	50	105	48	101	122
225	0,9	46	97	47	100	45	94	118
250	1	43	91	44	94	41	87	114
275	1,1	39	83	39	83	38	81	110
300	1,2	32	67	33	70	31	66	105
325	1,3	22	47	23	49	21	44	100
350	1,4	13	28	14	30	13	28	95
375	1,5	7	14	5	11	7	15	90


SOUND

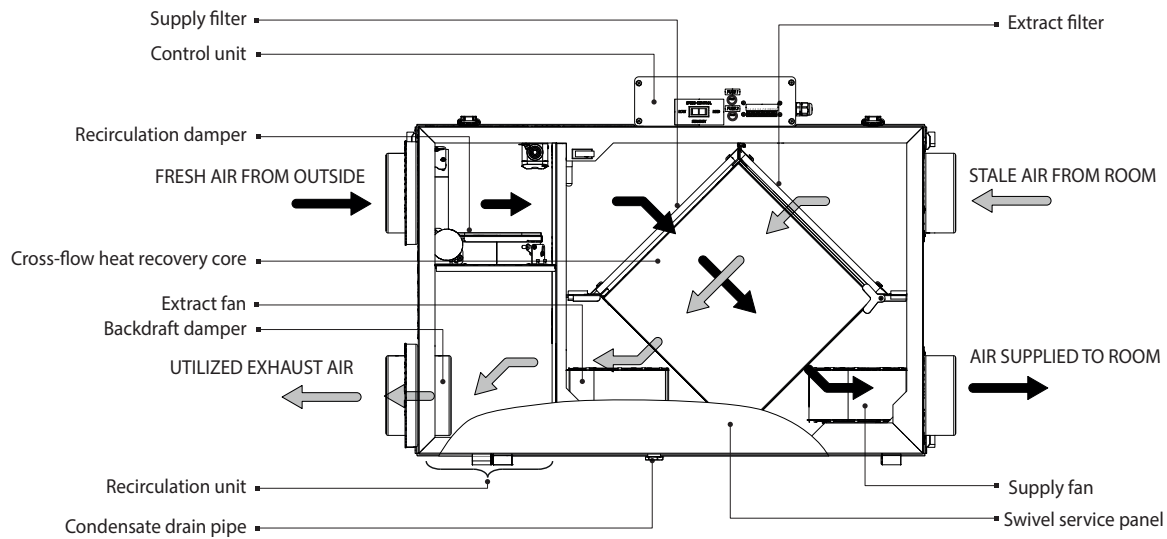
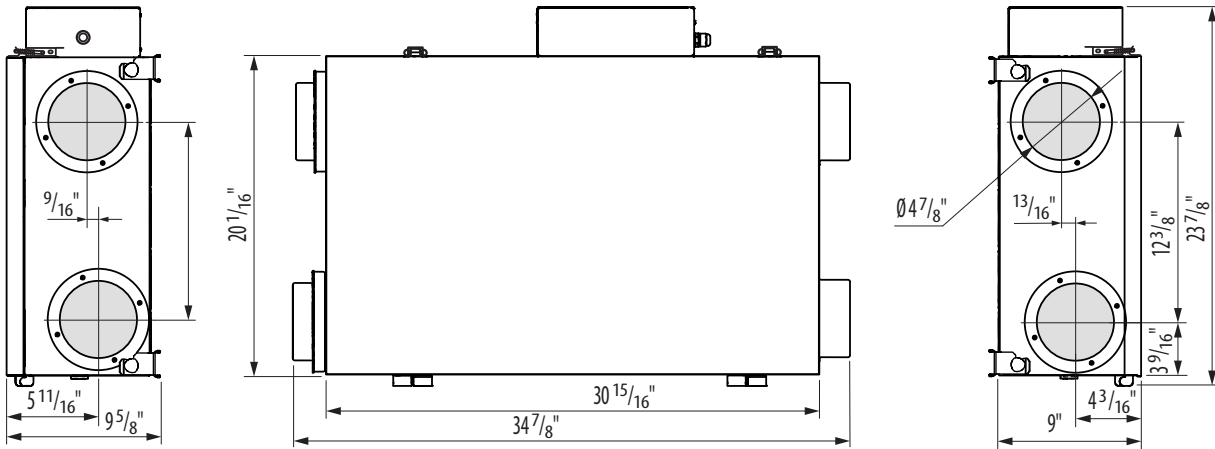
15 Sones (30 L/s @ 0.2 in. W.G.)

		Supply Temperature		Net Airflow		Average Power	Sensible Recovery Efficiency	Apparent Sensible Effectiveness	Net Moisture Transfer
		°C	°F	L/s	cfm	(Watts)	SRE (%)	ASEF (%)	
HEATING	I	0	32	24	51	64	68	81	0,66
	II	0	32	30	64	76	66	78	0,62
	III	0	32	48	101	114	61	72	0,60
	IV	-25	-13	25	54	97	50	79	0,46
	V								
COOLING	VI	35	95	24	51	62	46	66	0,54

** Indicates total recovery efficiency, not sensible recovery efficiency

MODEL	QUANTITY	COMMENTS	PROJECT
			location:
			architect:
			engineer:
			contractor:
			submitted by:

 Tel: 888-640-0925 Sales@ventsus.com
 513-348-3853 VentsUS.com
 Fax: 513-268-4597 11013 Kenwood Road,
 Cincinnati, Ohio 45242


DIMENSIONS


MODEL	QUANTITY	COMMENTS	PROJECT
			location:
			architect:
			engineer:
			contractor:
			submitted by: